



CONSTRUCTION UPDATE

A Project of the Riverside County Transportation Commission



JUNE 13, 2022

LANE AND RAMP CLOSURES

Construction activity will require nightly lane and ramp closures **June 13-17** for bridge and roadway work as we continue building the 15/91 Express Lanes Connector. Please see details below.

Westbound 91 Lane Closures, McKinley St. to Main St.

- Monday, June 13 through Thursday, June 16, nightly, 8 p.m. to 4 a.m.
- Friday, June 17, 10 p.m. to 6 a.m.

Eastbound 91 Lane Closures, Main St. to McKinley St.

- Monday, June 13 through Thursday, June 16, nightly, 9 p.m. to 6 a.m.
- Friday, June 17, 10 p.m. to 6 a.m.

Eastbound 91 Main St. On-Ramp Closures

- Monday, June 13 through Thursday, June 16, nightly, 9 p.m. to 6 a.m.
- Friday, June 17, 10 p.m. to 8 a.m.

Southbound 15 Lane Closures, Hidden Valley Pkwy. to the 91

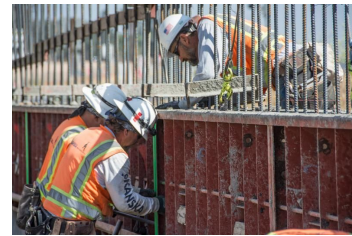
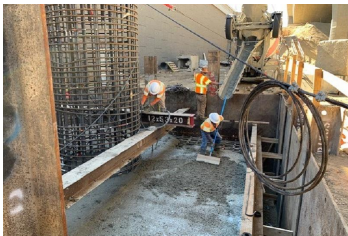
- Monday, June 13 through Thursday, June 16, nightly, 9 p.m. to 5 a.m.
- Friday, June 17, 9 p.m. to 6 a.m.

Northbound 15 to Eastbound 91 Connector Closure

- Monday, June 13, 8 p.m. to 4 a.m.
- Thursday, June 16, 8 p.m. to 4 a.m.

Eastbound 91 Express Lanes Connector Closure

- Wednesday, June 15, 10 p.m. to 4 a.m.
- Thursday, June 16, nightly, 10 p.m. to 6 a.m.



Please note that construction activity is subject to change.

15 INTERIM CORRIDOR OPERATIONS PROJECT



Nightly lane closures are needed June 13-16 for construction activities for the I-15 Interim Corridor Operations Project. Please see details below.

Southbound 15 Lane Closures, El Cerrito Road to Weirick Road

- Monday, June 13 through Thursday, June 16, nightly, 9 p.m. to 6 a.m.

Southbound 15, Cajalco Road On-Ramp Closures

- Tuesday June 14 through Thursday, June 16, nightly, 9 p.m. to 6 a.m.

Southbound 15, Weirick Road Off-Ramp Closures

- Tuesday, June 14 and Wednesday, June 15, nightly, 9 p.m. to 6 a.m.

The 15 Interim Corridor Operations Project will add a non-tolled travel lane to southbound I-15 between the Cajalco Road on-ramp and the Weirick Road off-ramp. Completion is anticipated in late summer/early fall.

Watch for updates or visit rctc.org/15icop for more information. Please sign up for text messages by texting **15iCOP** to (844) 771-0995.



NEIGHBORING PROJECTS

McKinley Street Grade Separation Project

Work is under way on this City of Corona project. For information and construction details, please visit the project [webpage](#) and register for text updates by texting MCKINLEY at 844-518-1409.

STRAIGHT TO YOUR MOBILE DEVICE

Text **CONNECTOR** to
(844) 771-0995

to sign up for text
message updates



PROJECT OVERVIEW

The Riverside County Transportation Commission, in partnership with Caltrans, is building the 15/91 Express Lanes Connector to link the 15 Express Lanes and the 91 Express Lanes for seamless, reliable travel. New connections will be provided:

- From the eastbound 91 Express Lanes to the northbound 15 Express Lanes and
- From the southbound 15 Express Lanes to the westbound 91 Express Lanes

The project also is extending both the eastbound 91 outside general-purpose lane and the eastern end of the 91 Express Lanes approximately one-half mile east to Promenade Avenue to help with vehicle merging in this area. Construction began in April 2021 and the connector is expected to open in 2023.



Visit our website

STAY CONNECTED



@1591Connector



rctc.org/15-91connector



(844) 415-9777



(844) 771-0995