

CONSTRUCTION UPDATE

A Project of the Riverside County Transportation Commission



MAY 31, 2022

UPCOMING WEEKEND FULL CLOSURE

WEEKEND FULL CLOSURE:
All Lanes, Southbound 15 at
15/91 Interchange

Friday, June 10, 9 p.m. to
Monday, June 13, 5 a.m.



SOUTHBOUND 15 AT 15/91 INTERCHANGE

Friday, June 10 – Monday, June 13

A full closure of southbound I-15 at the 15/91 interchange in Corona is scheduled the weekend of June 10–13, 2022. The closure will allow crews to safely place support structures over southbound I-15 for the new 15/91 Express Lanes Connector.

[Press play to learn more.](#)

LANE AND RAMP CLOSURES

Construction activity will require nightly lane and ramp closures **May 31- June 3** for bridge and roadway work as we continue building the 15/91 Express Lanes Connector. Please see details below.

Westbound 91 Lane Closures, McKinley St. to Main St.

- Tuesday, May 31 through Thursday, June 2, nightly, 8 p.m. to 4 a.m.
- Friday, June 3, 10 p.m. to 6 a.m.

Eastbound 91 Lane Closures, Main St. to McKinley St.

- Tuesday, May 31 and Wednesday, June 1, nightly, 9 p.m. to 6 a.m.
- Thursday, June 2 and Friday, June 3, nightly, 10 p.m. to 6 a.m.

Eastbound 91 Main St. On-Ramp Closures

- Tuesday, May 31 through Thursday, June 2, nightly, 9 p.m. to 6 a.m.
- Friday, June 3, 10 p.m. to 8 a.m.

Southbound 15 Lane Closure, Hidden Valley Pkwy. to the 91

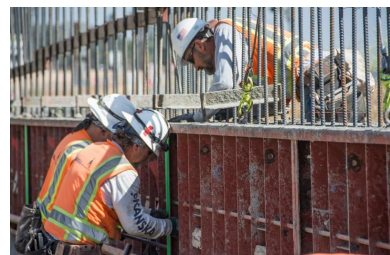
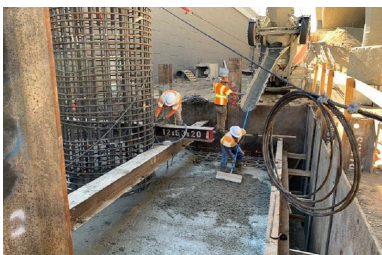
- Tuesday, May 31 through Thursday, June 2, nightly, 9 p.m. to 5 a.m.
- Friday, June 3, 9 p.m. to 6 a.m.

Eastbound 91 Express Lanes Connector Closure

- Tuesday, May 31, 10 p.m. to 4 a.m.

Northbound 15 to Eastbound 91 Connector Closure

- Tuesday, May 31, 8 p.m. to 4 a.m.



Please note that construction activity is subject to change.

15 INTERIM CORRIDOR OPERATIONS PROJECT



Nightly lane closures are needed June 2-3 for crews to place k-rail and conduct other construction activities for the I-15 Corridor Operations Project. Please see details below.

Southbound 15, El Cerrito Road to Weirick Road Lane Closures

- Thursday, June 2 and Friday, June 3, nightly, 9 p.m. to 4 a.m.

The 15 Interim Corridor Operations Project will add a non-tolled travel lane to southbound I-15 between the Cajalco Road on-ramp and the Weirick Road off-ramp. Completion is anticipated in late summer/early fall.

Watch for updates or visit rctc.org/15icop for more information. Please sign up for text messages by texting **15iCOP** to (844) 771-0995.



MEMORIAL DAY - NO CLOSURES



Please note, there will be no road closures Friday, May 27 - Monday, May 30, due to the Memorial Day holiday. Please drive safely and enjoy the holiday weekend.

NEIGHBORING PROJECTS

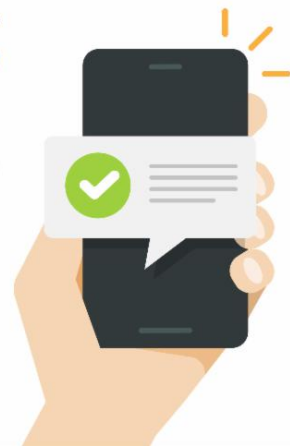
McKinley Street Grade Separation Project

Work is under way on this City of Corona project. For information and construction details, please visit the project [webpage](#) and register for text updates by texting MCKINLEY at 844-518-1409.

STRAIGHT TO YOUR MOBILE DEVICE

Text CONNECTOR to (844) 771-0995

to sign up for text message updates



PROJECT OVERVIEW

The Riverside County Transportation Commission, in partnership with Caltrans, is building the 15/91 Express Lanes Connector to link the 15 Express Lanes and the 91 Express Lanes for seamless, reliable travel. New connections will be provided:

- From the eastbound 91 Express Lanes to the northbound 15 Express Lanes and
- From the southbound 15 Express Lanes to the westbound 91 Express Lanes

The project also is extending both the eastbound 91 outside general-purpose lane and the eastern end of the 91 Express Lanes approximately one-half mile east to Promenade Avenue to help with vehicle merging in this area. Construction began in April 2021 and the connector is expected to open in 2023.



[Visit our website](#)

STAY CONNECTED



@1591Connector



rctc.org/15-91connector



(844) 415-9777



(844) 771-0995