



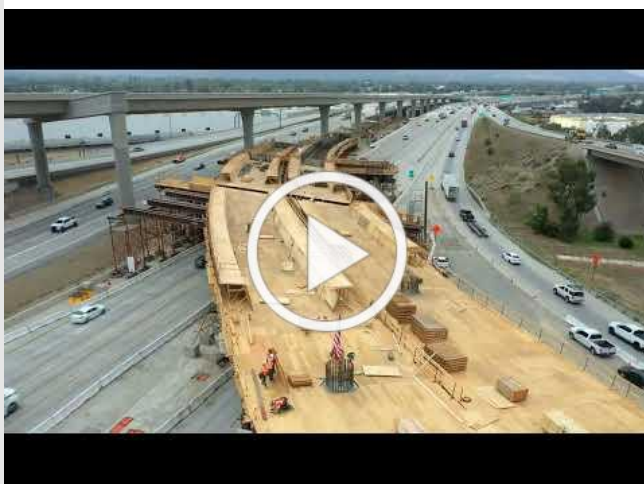
15/91
EXPRESS LANES
CONNECTOR

CONSTRUCTION UPDATE

A Project of the Riverside County Transportation Commission



MAY 16, 2022



Work, Work, Work and Lots of Progress!

Progress continues on the 15/91 Express Lanes Connector. Press play to see our crews building the support structures for the work ahead.

LANE AND RAMP CLOSURES

Construction activity will require nightly lane and ramp closures **May 16-20** for bridge and roadway work as we continue building the 15/91 Express Lanes Connector. See details below.

Westbound 91 Lane Closures, McKinley St. to Main St.

- Monday, May 16 through Thursday, May 19, nightly, 8 p.m. to 4 a.m.
- Friday, May 20, 10 p.m. to 6 a.m.

Eastbound 91 Lane Closures, Main St. to McKinley St.

- Monday, May 16 through Wednesday, May 18, nightly, 9 p.m. to 6 a.m.
- Thursday, May 19 and Friday, May 20, nightly, 10 p.m. to 6 a.m.

Eastbound 91 Main St. On-Ramp Closures

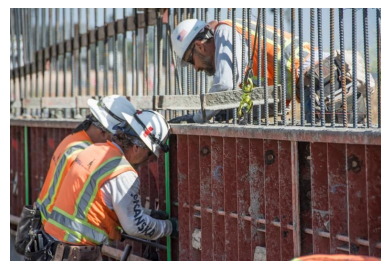
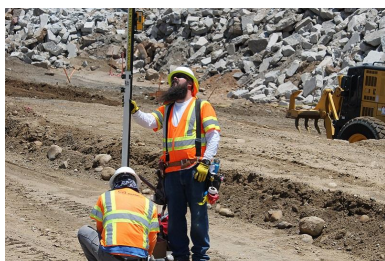
- Monday, May 16 through Thursday, May 19, nightly, 9 p.m. to 6 a.m.
- Friday, May 20, 10 p.m. to 8 a.m.

Southbound 15 Lane Closures, Hidden Valley Pkwy to the 91

- Monday, May 16 through Thursday, May 19, nightly, 9 p.m. to 5 a.m.
- Friday, May 20, 9 p.m. to 6 a.m.

Eastbound 91 Express Lanes Connector Closures

- Monday, May 16, 10 p.m. to 6 a.m.
- Tuesday, May 17 and Wednesday, May 18, nightly, 10 p.m. to 4 a.m.
- Thursday, May 19, 10 p.m. to 6 a.m.



Please note that construction activity is subject to change.

EXPRESS LANES CONNECTOR FUN FACT

It has been a year since we started construction. See our fun fact!

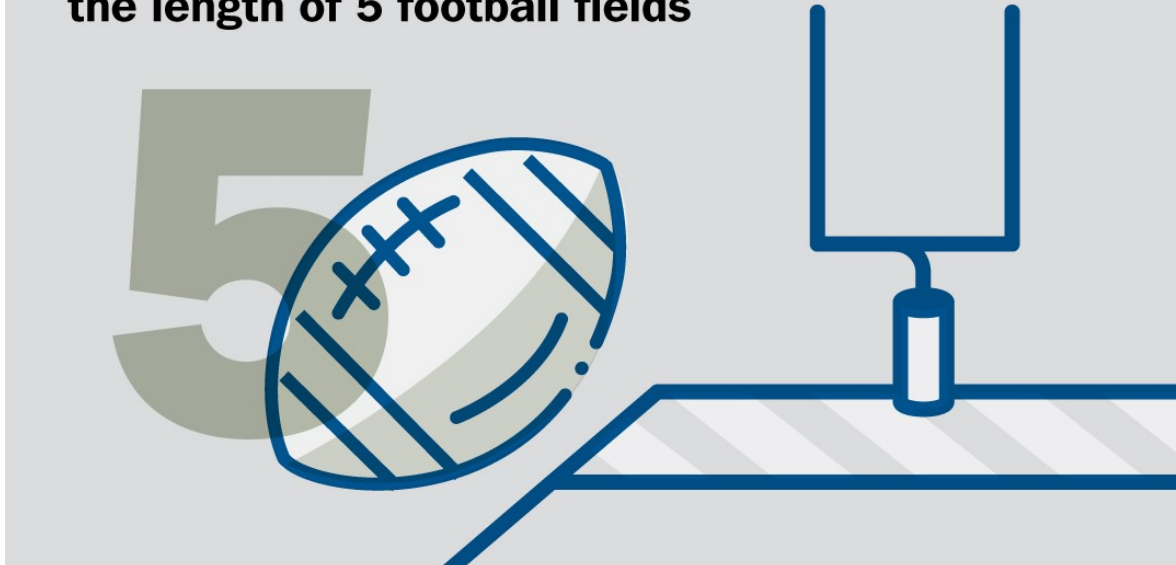


15/91
EXPRESS LANES
CONNECTOR

A YEAR IN NUMBERS

During our first year of construction,
April 2021-April 2022, our hard-working crews...

Laid **1,500 linear ft.** of drainage pipe –
the length of 5 football fields



MEET THE TEAM



15/91
EXPRESS LANES
CONNECTOR

The Crew Behind the Connector



Sri Srirajan

Project Manager
RCTC

“The work we do for the Express Lanes Connector is so dynamic with new challenges every day. The project is important to local residents, and we take great pride in building a quality product, while keeping motorists well-informed on the construction progress.”

Meet Sri Srirajan, our hard-working Project Manager for the 15/91 Express Lanes Connector. With 20+ years of transportation experience, Sri makes sure the work is scheduled efficiently and completed on time.

A Corona resident, he knows the 15/91 Express Lanes Connector will help improve traffic operations, safety, and reliability.

Thank you, Sri, for your important role on this project and for helping RCTC deliver mobility solutions.

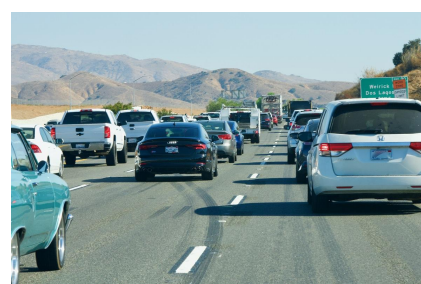
15 INTERIM CORRIDOR OPERATIONS PROJECT



Interstate 15
INTERIM CORRIDOR
OPERATIONS PROJECT

Construction is right around the corner for the I-15 Corridor Operations Project. Crews will begin work this month to add a non-tolled travel lane to southbound I-15 between the Cajalco Road on-ramp and the Weirick Road off-ramp. Completion is anticipated in late summer/early fall.

Watch for updates or visit rctc.org/15icop for more information. You also can sign up for text messages by texting **15iCOP** to (844) 771-0995.



NEIGHBORING PROJECTS

McKinley Street Grade Separation Project

Work is under way on this City of Corona project. For information and construction details, please visit the project [webpage](#) and register for text updates by texting MCKINLEY at 844-518-1409.

Caltrans Sweeping Activity

Caltrans will be sweeping lanes on southbound I-15 and eastbound 91 this Sunday, May 15 from 5 a.m. to 2 p.m. in and near our 15/91 Express Lanes Connector project limits. Please reduce your speed and watch for crews at work.

Text **CONNECTOR** to
(844) 771-0995

to sign up for text
message updates



PROJECT OVERVIEW

The Riverside County Transportation Commission, in partnership with Caltrans, is building the 15/91 Express Lanes Connector to link the 15 Express Lanes and the 91 Express Lanes for seamless, reliable travel. New connections will be provided:

- From the eastbound 91 Express Lanes to the northbound 15 Express Lanes and
- From the southbound 15 Express Lanes to the westbound 91 Express Lanes

The project also is extending both the eastbound 91 outside general-purpose lane and the eastern end of the 91 Express Lanes approximately one-half mile east to Promenade Avenue to help with vehicle merging in this area. Construction began in April 2021 and the connector is expected to open in 2023.



Visit our website

STAY CONNECTED

  
@1591Connector


rctc.org/15-91connector


(844) 415-9777


(844) 771-0995