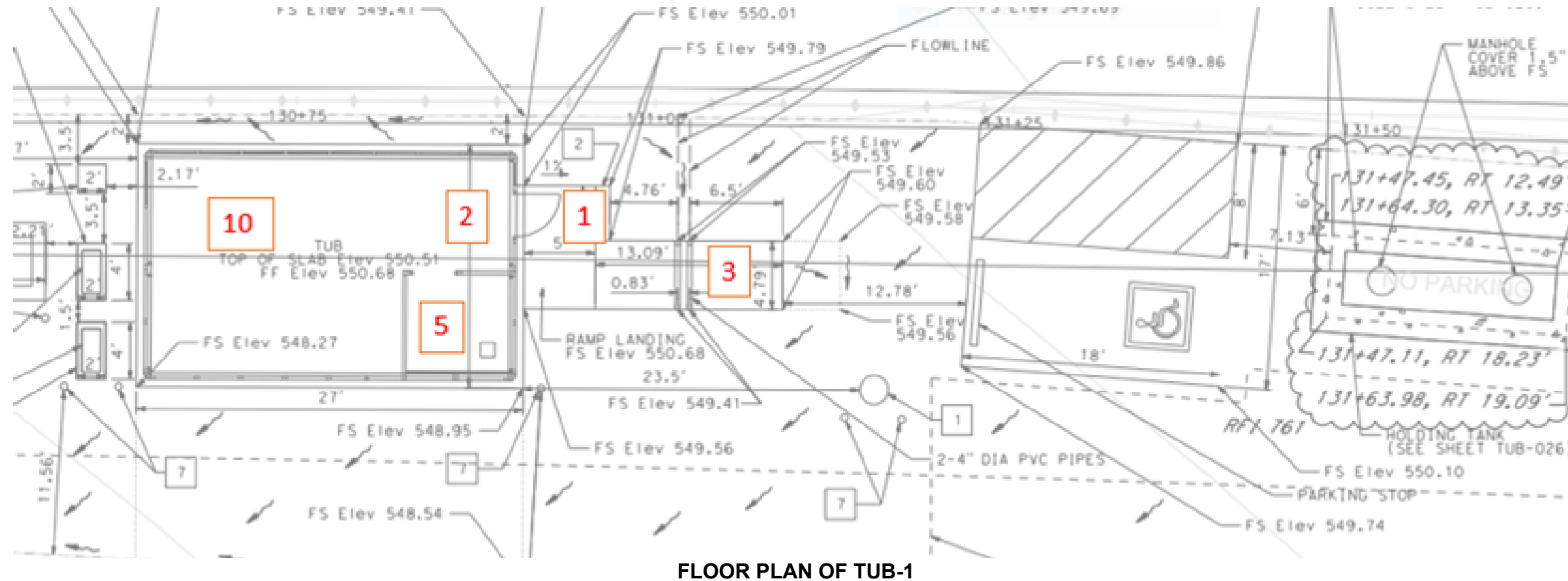


Evaluation of Physical Barriers – TUB-1

Address: Located in the median of State Route 91 freeway

Evaluation Date: 07-19-2021



These elements were assessed to identify any physical barriers:


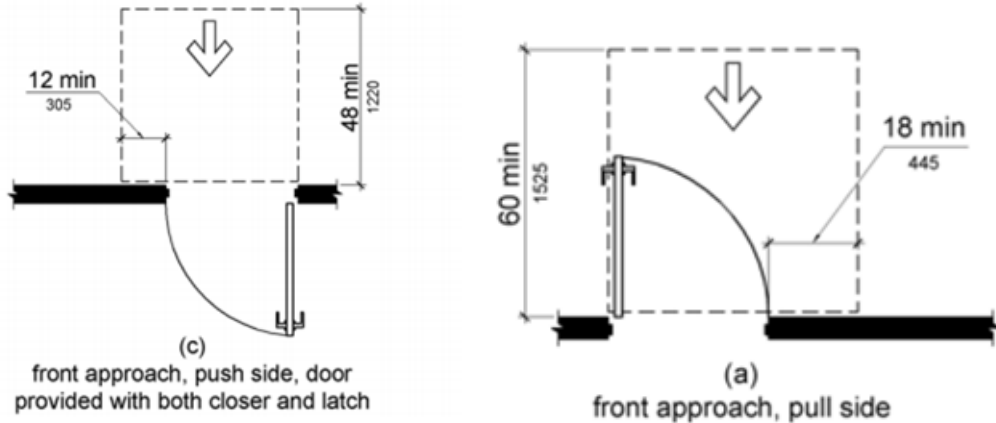
1. Entry door
2. Exit door (Same as above)
3. Exterior Accessible route
4. Common Use Areas (not shown)
5. Restrooms
6. Break room (Not applicable)
7. Conference Room/Meeting room (Not applicable)
8. Fire Alarm (not shown)
9. Signage (not shown)
10. Employee Work Area

Year Constructed: 2017

Applicable ADA Standards: DOT's ADA Standards (2006) and DOJ 2010 ADA Standards.

Note: Criteria used to assess the elements were based on DOJ 2010 standards, DOT's ADA standards (2006).

Issues/ Barriers Identified	Solutions	Comments/ ADA Requirements
<div data-bbox="164 163 385 197" data-label="Section-Header"><p>1. Entry Doors</p></div> <div data-bbox="211 258 1143 395" data-label="Text"><p>Maneuvering clearance for the main entry/exit door from inside is reduced by the fire extinguishing apparatus to 9 inches instead of the required 12 inches. Maneuvering clearance for the restroom door is also impeded.</p></div> <div data-bbox="211 431 1103 1016" data-label="Image"></div>	<div data-bbox="1196 258 1572 465" data-label="Text"><p>Relocate apparatus to provide maneuvering clearances required for exiting the space and for entering the toilet room. Or,</p></div> <div data-bbox="1196 504 1529 675" data-label="Text"><p>Provide automatic push button that can allow the doors to remain open in the power-off condition. Or,</p></div> <div data-bbox="1196 713 1572 957" data-label="Text"><p>A Personal Assistance Service (PAS) can be provided as a reasonable accommodation to enable an employee to perform the essential functions of their job.</p></div>	<div data-bbox="1600 258 2952 429" data-label="Text"><p>404.3.2 Maneuvering Clearance. Clearances at power-assisted doors and gates shall comply with 404.2.4. Clearances at automatic doors and gates without standby power and serving an accessible means of egress shall comply with 404.2.4. EXCEPTION: Where automatic doors and gates remain open in the power-off condition, compliance with 404.2.4 shall not be required.</p></div> <div data-bbox="1650 459 2520 828" data-label="Diagram"></div> <div data-bbox="1600 872 2685 905" data-label="Caption"><p>Figure 404.2.4.1 Maneuvering Clearances at Manual Swinging Doors and Gates</p></div>
<div data-bbox="164 1058 360 1092" data-label="Section-Header"><p>2. Exit Doors</p></div>		<p>Single entry/exit door. See above.</p>
<div data-bbox="164 1108 578 1143" data-label="Section-Header"><p>3. Exterior Accessible route</p></div>		
<div data-bbox="211 1177 1131 1278" data-label="Text"><p>The bottom sloped extension of the handrail at exterior stairs is reduced to 10 inches due to the post, instead of being equal to tread depth</p></div>	<div data-bbox="1196 1177 1479 1278" data-label="Text"><p>Compliant bottom rail extensions shall be provided</p></div>	<div data-bbox="1600 1207 2362 1723" data-label="Diagram"></div> <div data-bbox="1858 1620 2128 1649" data-label="Caption"><p>FIGURE 11B-505.10.3</p></div> <div data-bbox="1709 1685 2278 1713" data-label="Caption"><p>BOTTOM HANDRAIL EXTENSION AT STAIRS</p></div>

Issues/ Barriers Identified	Solutions	Comments/ ADA Requirements
4. Common Use Areas		
a. Controls for lighting and thermostats etc.		No issues found
b. Restrooms		
i. Identification Signage is missing at the restroom.	Provide a tactile and visual sign containing raised characters and Braille lettering signs. The unisex toilet room is sized to accommodate accessibility requirements	216.2 Designations. Interior and exterior signs identifying permanent rooms and spaces shall comply with 703.1, 703.2, and 703.5
ii. Maneuvering clearance to the restroom door from inside is blocked by the storage unit 	Relocate storage unit to provide at least 12 inches clearance on the latch side.	 Figure 404.2.4.1 Maneuvering Clearances at Manual Swinging Doors and Gates
c. Break Room		Not applicable
d. Conference Meeting Rooms		Not applicable
e. Fire Alarm		No issues found
Fire alarm devices shall be tested for compliance to ADA standard 702.1		It is assumed that permanently installed audible and visible alarms comply with NFPA 72 and California building code requirements, and that maintenance and testing are performed by trained persons to ensure safe and reliable operations of the system. ADA Standards require that the maximum allowable sound level of audible notification appliances complying with section 4-3.2.1 of NFPA 72 (1999 edition) shall have a sound level no more than 110 dB at the minimum hearing distance from the audible appliance.
f. Signage		
Accessibility signage is not provided on the exit door.	Provide tactile sign containing raised characters and Braille lettering at designated exit doors	216.4.1 Exit Doors. Doors at exit passageways, exit discharge, and exit stairways shall be identified by tactile signs complying with 703.1, 703.2, and 703.5.
g. Employee Work Areas		No issues found