



15/91  
EXPRESS LANES  
CONNECTOR

# CONSTRUCTION UPDATE

A Project of the Riverside County Transportation Commission



APRIL 11, 2022



## It's Taking Shape!

Progress continues on the 15/91 Express Lanes Connector. Press play to see our crews building the support structures for the work ahead.

## LANE AND RAMP CLOSURES

Construction activity will require nightly lane and ramp closures **April 11-15** for bridge and roadway work as we continue building the 15/91 Express Lanes Connector. See details below.

### Westbound 91 Lane Closures, McKinley St. to Main St.

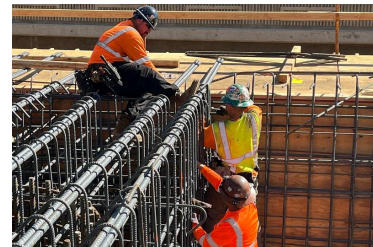
- Monday, April 11 through Thursday, April 14, nightly, 8 p.m. to 4 a.m.
- Friday, April 15, 10 p.m. to 6 a.m.

### Eastbound 91 to Northbound 15 Connector Closure

- Tuesday, April 12, 8 p.m. to 4 a.m.

### Southbound 15 to Eastbound 91 Connector Closure

- Tuesday, April 12, 9 p.m. to 5 a.m.



*Please note that construction activity is subject to change.*

## 15 INTERIM CORRIDOR OPERATIONS PROJECT



Interstate 15  
INTERIM CORRIDOR  
OPERATIONS PROJECT

RCTC awarded a construction contract to Corona-based All American Asphalt to add a lane to southbound I-15 to help relieve traffic congestion between Cajalco Rd. and Weirick Rd. Construction is expected to start in May and be complete this summer or early fall. Watch for project updates or visit [rctc.org/15icop](http://rctc.org/15icop) for more information.

STRAIGHT TO YOUR MOBILE DEVICE

# Text **CONNECTOR** to **(844) 771-0995**

## to sign up for text message updates



### PROJECT OVERVIEW

The Riverside County Transportation Commission, in partnership with Caltrans, is building the 15/91 Express Lanes Connector to link the 15 Express Lanes and the 91 Express Lanes for seamless, reliable travel. New connections will be provided:

- From the eastbound 91 Express Lanes to the northbound 15 Express Lanes and
- From the southbound 15 Express Lanes to the westbound 91 Express Lanes

The project also is extending both the eastbound 91 outside general-purpose lane and the eastern end of the 91 Express Lanes approximately one-half mile east to Promenade Avenue to help with vehicle merging in this area. Construction began in April 2021 and the connector is expected to open in 2023.



Visit our website

### STAY CONNECTED



@1591Connector



rctc.org/15-91connector



(844) 415-9777



(844) 771-0995