



15/91
EXPRESS LANES
CONNECTOR

CONSTRUCTION UPDATE

A Project of the Riverside County Transportation Commission



MAY 2, 2022

LANE AND RAMP CLOSURES

Construction activity will require nightly lane and ramp closures **May 2-6** for bridge and roadway work as we continue building the 15/91 Express Lanes Connector. See details below.

Westbound 91 Lane Closures, McKinley St. to Main St.

- Monday, May 2 through Thursday, May 5, nightly, 8 p.m. to 4 a.m.
- Friday, May 6, 10 p.m. to 6 a.m.

Eastbound 91 Lane Closures, Main St. to McKinley St.

- Monday, May 2 through Wednesday, May 4, nightly, 9 p.m. to 6 a.m.
- Thursday, May 5 and Friday, May 6, nightly, 10 p.m. to 6 a.m.

Eastbound 91 Main St. On-Ramp Closures

- Monday, May 2 through Thursday, May 5, nightly, 9 p.m. to 6 a.m.
- Friday, May 6, 10 p.m. to 8 a.m.

Eastbound 91 Express Lanes Closure

- Monday, May 2, 10 p.m. to 6 a.m.

Southbound 15 to Eastbound 91 Connector Closure

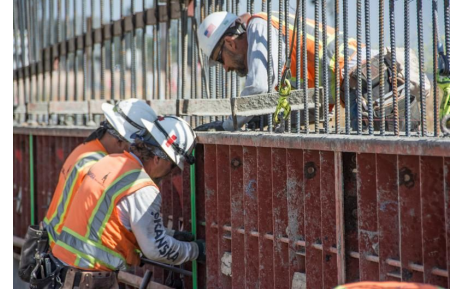
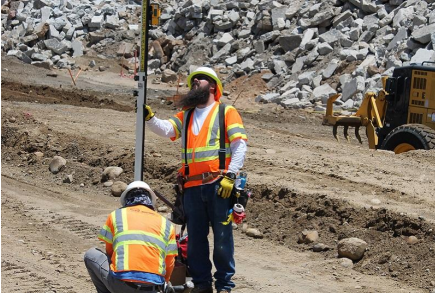
- Tuesday, May 3, 9 p.m. to 6 a.m.

Southbound 15 Lane Closures, Hidden Valley Pkwy to the 91

- Monday, May 2 through Thursday, May 5, nightly, 9 p.m. to 5 a.m.
- Friday, May 6, 9 p.m. to 6 a.m.

Northbound 15 to Eastbound 91 Connector Closure

- Tuesday, May 3, 8 p.m. to 4 a.m.



Please note that construction activity is subject to change.

EXPRESS LANES CONNECTOR FUN FACT

It has been a year since we started construction. See our fun fact!



15/91
EXPRESS LANES
CONNECTOR

A YEAR IN NUMBERS

**During our first year of construction,
April 2021-April 2022, our hard-working crews...**



Removed
**103,000
cubic yards**
of dirt – equal
to 20 million
gallons of milk



Interstate 15
**INTERIM CORRIDOR
OPERATIONS PROJECT**

RCTC awarded a construction contract to Corona-based All American Asphalt to add a lane to southbound I-15 to help relieve traffic congestion between Cajalco Rd. and Weirick Rd. Construction is expected to start on or about May 19 with completion set for September 2022. Watch for project updates or visit rctc.org/15icop for more information.



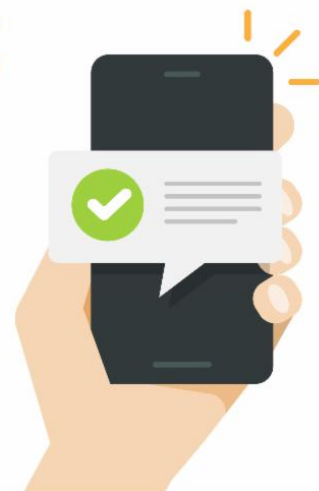
STRAIGHT TO YOUR MOBILE DEVICE

Text **CONNECTOR** to
(844) 771-0995

to sign up for text
message updates



15/91
**EXPRESS LANES
CONNECTOR**



PROJECT OVERVIEW

The Riverside County Transportation Commission, in partnership with Caltrans, is building the 15/91 Express Lanes Connector to link the 15 Express Lanes and the 91 Express Lanes for seamless, reliable travel. New connections will be provided:

- From the eastbound 91 Express Lanes to the northbound 15 Express Lanes and
- From the southbound 15 Express Lanes to the westbound 91 Express Lanes

The project also is extending both the eastbound 91 outside general-purpose lane and the eastern end of the 91 Express Lanes approximately one-half mile east to Promenade Avenue to help with vehicle merging in this area. Construction began in April 2021 and the connector is expected to open in 2023.



[Visit our website](#)

STAY CONNECTED



@1591Connector



rctc.org/15-91connector



(844) 415-9777



(844) 771-0995