

CONSTRUCTION UPDATE

A Project of the Riverside County Transportation Commission



FEBRUARY 28, 2022

LANE AND RAMP CLOSURES

Construction activity will require nightly closures **February 28 - March 4** for bridge and roadway work as we continue building the 15/91 Express Lanes Connector. See details below.

Westbound 91 Lane Closures, McKinley St. to Main St.

- Monday, February 28 through Thursday, March 3, nightly, 8 p.m. to 4 a.m.
- Friday, March 4, 10 p.m. to 6 a.m.

Eastbound 91 Lane Closures, Main St. to McKinley St.

- Monday, February 28 and Wednesday, March 2, nightly, 9 p.m. to 6 a.m.
- Thursday, March 3 and Friday, March 4, nightly, 10 p.m. to 6 a.m.

Eastbound 91 Main St. On-Ramp Closures

- Monday, February 28 through Thursday, March 3, nightly, 9 p.m. to 6 a.m.
- Friday, March 4, 10 p.m. to 8 a.m.

Northbound 15 to Eastbound 91 Connector Closure

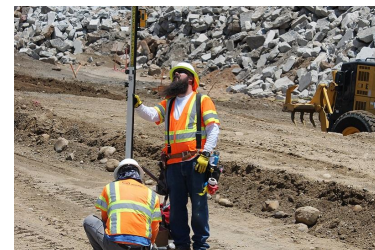
- Monday, February 28, 8 p.m. to 4 a.m.

Southbound 15 to Eastbound 91 Connector Closure

- Monday, February 28, 9 p.m. to 5 a.m.

Southbound 15 to Westbound 91 Connector Closure

- Monday, February 28, 10 p.m. to 5 a.m.



Please note that construction activity is subject to change.

NEIGHBORING PROJECTS

91 Corridor Operations Project:

A new lane opened January 6 on westbound 91 between Green River Road and the 241 Toll Road to help ease traffic congestion, especially for morning commuters. Please watch for nighttime lane closures this week as crews finalize project details.

91 Repair Work, 2nd Street Lane Reductions in Corona:

RCTC and Caltrans are making repairs to the 91 between Main St. and Lincoln Ave. Travel is one-way (eastbound only) on W. 2nd St., between W. Grand Blvd. and Sheridan St. Read [more](#).



STRAIGHT TO YOUR MOBILE DEVICE

Text **CONNECTOR** to **(844) 771-0995**

to sign up for text message updates



PROJECT OVERVIEW

The Riverside County Transportation Commission, in partnership with Caltrans, is building the 15/91 Express Lanes Connector to link the 15 Express Lanes and the 91 Express Lanes for seamless, reliable travel. New connections will be provided:

- From the eastbound 91 Express Lanes to the northbound 15 Express Lanes and
- From the southbound 15 Express Lanes to the westbound 91 Express Lanes

The project also is extending both the eastbound 91 outside general-purpose lane and the eastern end of the 91 Express Lanes approximately one-half mile east to Promenade Avenue to help with vehicle merging in this area. Construction began in April 2021 and the connector is expected to open in 2023.



[Visit our website](#)

STAY CONNECTED



@1591Connector



rctc.org/15-91connector



(844) 415-9777



(844) 771-0995