



CONSTRUCTION UPDATE

A Project of the Riverside County Transportation Commission



FEBRUARY 21, 2022

A Weekend's Work Shown in 59 Seconds...

Press “play” for time-lapse images from our crews placing support structures for the 15/91 Express Lanes Connector, the weekend of January 28. Our team hustled and completed the work nearly a day early, allowing westbound 91 to reopen on Sunday morning.



LANE AND RAMP CLOSURES

Construction activity will require nightly closures **February 22-25** for bridge and roadway work as we continue building the 15/91 Express Lanes Connector. There are no scheduled closures on Monday, Feb. 21 due to the holiday. See details below.

Westbound 91 Lane Closures, McKinley St. to Main St.

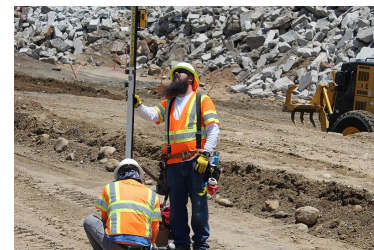
- Tuesday, February 22 through Thursday, February 24, nightly, 8 p.m. to 4 a.m.
- Friday, February 25, 10 p.m. to 6 a.m.

Eastbound 91 Reduced Lanes, Main St. to McKinley St.

- Tuesday, February 22 and Wednesday, February 23, nightly, 9 p.m. to 6 a.m.
- Thursday, February 24 and Friday, February 25, nightly, 10 p.m. to 6 a.m.

Eastbound 91 Main St. On-Ramp Closures

- Tuesday, February 22 through Thursday, February 24, nightly, 9 p.m. to 6 a.m.
- Friday, February 25, 10 p.m. to 8 a.m.



Please note that construction activity is subject to change.

NEIGHBORING PROJECTS

91 Corridor Operations Project:

A new lane opened January 6 on westbound 91 between Green River Road and the 241 Toll Road to help ease traffic congestion, especially for morning commuters. Please watch for nighttime lane closures this week as crews finalize project details.

91 Repair Work, 2nd Street Lane Reductions in Corona:

RCTC and Caltrans are making repairs to the 91 between Main St. and Lincoln Ave. Travel is one-way (eastbound only) on W. 2nd St., between W. Grand Blvd. and Sheridan St. Read [more](#).



STRAIGHT TO YOUR MOBILE DEVICE

Text **CONNECTOR** to **(844) 771-0995**

to sign up for text message updates



PROJECT OVERVIEW

The Riverside County Transportation Commission, in partnership with Caltrans, is building the 15/91 Express Lanes Connector to link the 15 Express Lanes and the 91 Express Lanes for seamless, reliable travel. New connections will be provided:

- From the eastbound 91 Express Lanes to the northbound 15 Express Lanes and
- From the southbound 15 Express Lanes to the westbound 91 Express Lanes

The project also is extending both the eastbound 91 outside general-purpose lane and the eastern end of the 91 Express Lanes approximately one-half mile east to Promenade Avenue to help with vehicle merging in this area. Construction began in April 2021 and the connector is expected to open in 2023.



[Visit our website](#)

STAY CONNECTED



@1591Connector



rctc.org/15-91connector



(844) 415-9777



(844) 771-0995