



State Route 91 CORRIDOR OPERATIONS PROJECT



[View as PDF](#)

Construction Update: Week of January 3, 2022

Nighttime Full Closure, Westbound 91, January 7-8 **Nighttime Lane Closures, Westbound 91, January 3-6**

A full closure of westbound 91 between the 71 and the 241 is scheduled for Friday, January 7 at 11 p.m. to Saturday, January 8 at 5 a.m. The closure is needed for crews to safely install a new overhead sign across the lanes. Motorists should avoid the area and use alternate routes or be prepared for significant delays. Detours will be provided using northbound 71 to westbound 60; see detour map below. To support the full closure, the westbound Green River Road on-ramp and off-ramp, the southbound 71 to westbound 91 connector, the northbound 15 to westbound 91 Express Lanes connector, and the westbound 91 Express Lanes in Riverside and Orange Counties will be closed as early as 8 p.m. on Friday.

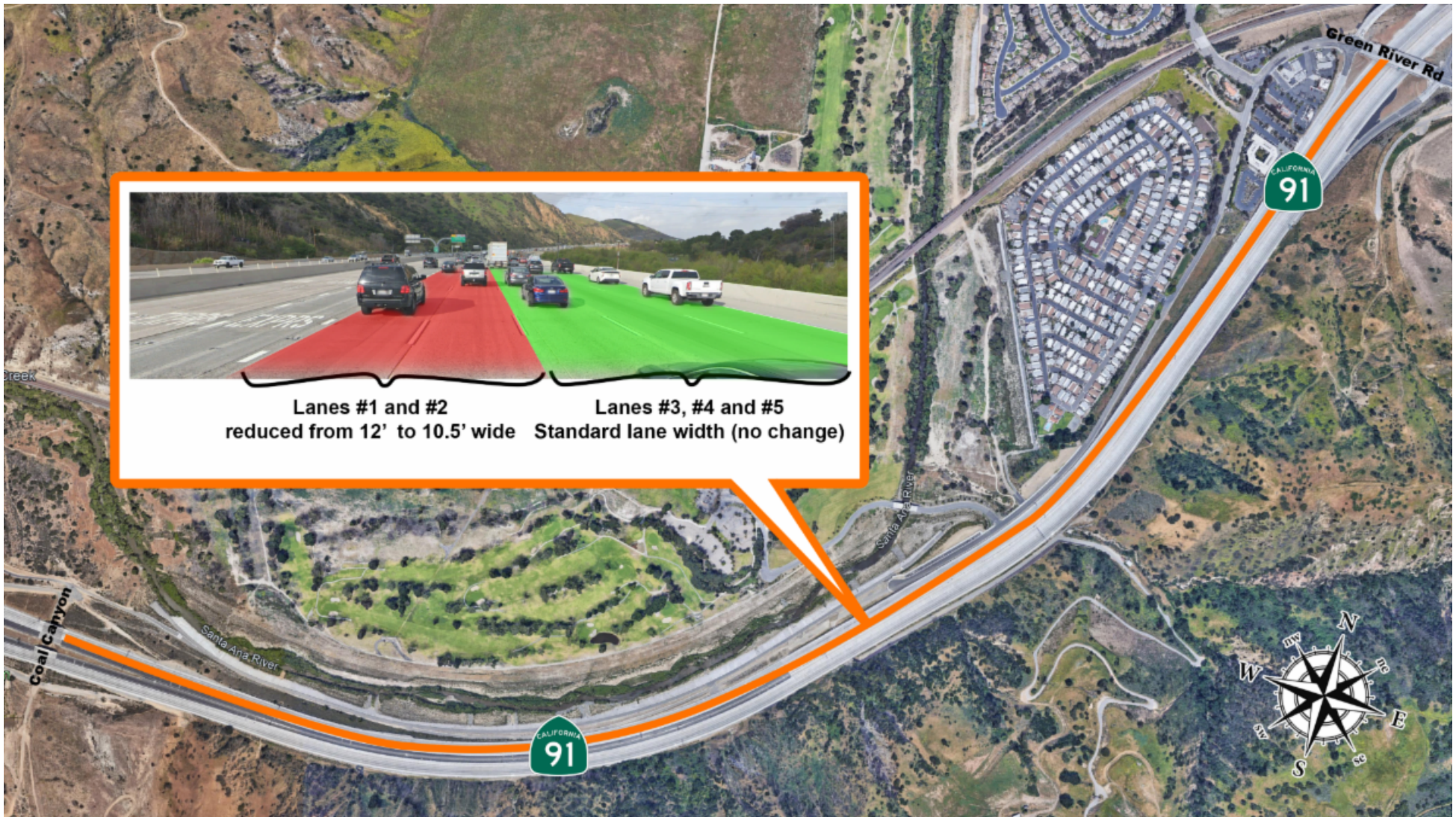
Construction activity may change due to weather or other factors. If work cannot be performed on January 7, it will be rescheduled for the next possible date.

Ongoing closures of the #3, #4, #5 lanes on westbound 91 from Green River Rd. to the 241 Toll Road will be needed, Monday to Wednesday, January 3-5, nightly from 9 p.m. to 4 a.m. The #1, #2, #3, and westbound 91 Express Lanes will close Thursday night, January 6, from 8 p.m. to 4 a.m. The nighttime lane closures will allow crews to safely remove barriers and restripe lanes.



[Download Detour PDF](#)

Reminder: The 91 westbound lanes between Green River Road and Coal Canyon are reduced in width. Drive safely in these narrowed lanes and always signal before changing lanes. The speed limit through the construction zone is 55 mph.





SART Temporary Parking



Temporary Santa Ana River Trail Parking Relocation

The parking lot at the Santa Ana River Trailhead near Green River Road will remain temporarily closed for the safety of trail users and construction crews. Please use the upper parking lot at

4740 Green River Road. Do not park at the Green River Golf Club; parking is for club patrons only. The Santa Ana River Trail will remain open during construction, and access to the trail will be provided, although some traffic control measures will be in place. Please do not enter the construction zone near the trailhead.

[Download SART Temporary Parking PDF](#)

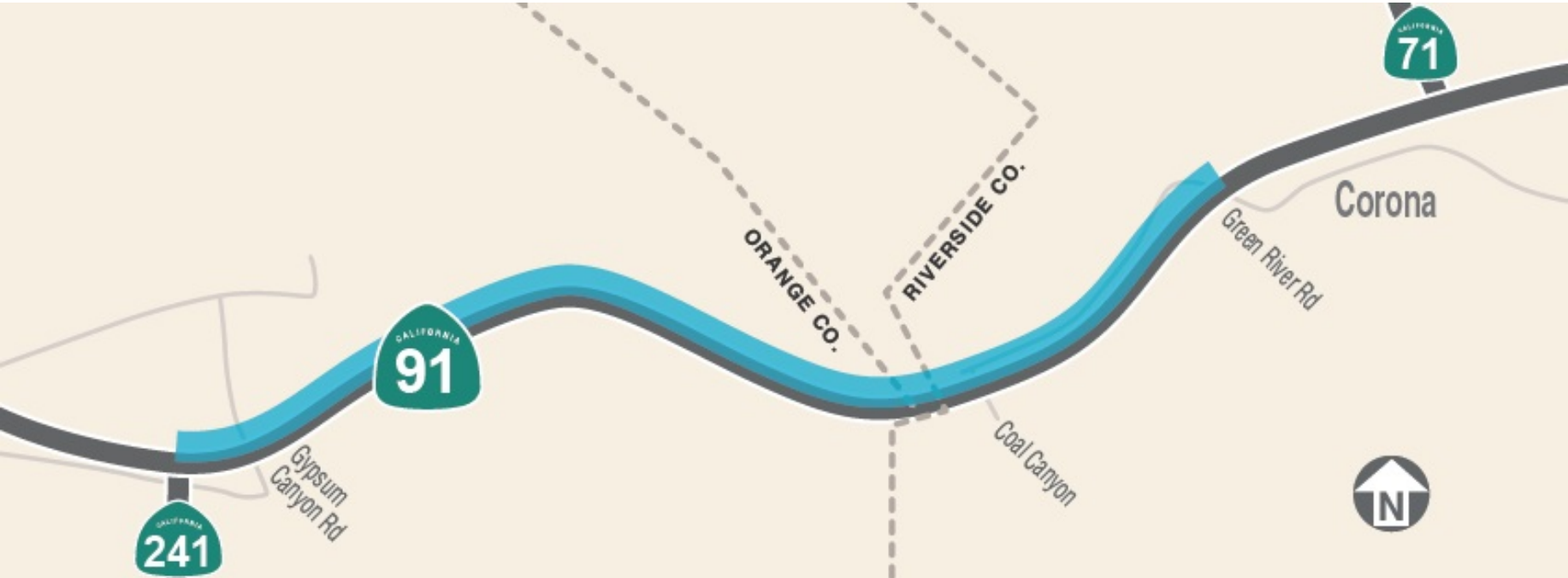
Project Overview

The Riverside County Transportation Commission, in partnership with Caltrans, the Orange County Transportation Authority, the Transportation Corridor Agencies, and the City of Corona, is building the 91 Corridor Operations Project. The project will add a lane to westbound 91 for approximately two miles between the Green River Road on-ramp and the southbound 241 connector. The new lane, which will be built next to the outer shoulder, will help relieve westbound traffic congestion through this heavily traveled corridor.

Please stay connected through construction updates, follow @therctc on social media, and watch for lane closures, narrower lanes, construction crews and equipment, and changing conditions on the 91 and Green River Road. Noisy work also may be required.

[Check out our project overview video!](#)

Construction Area



Stay Connected



1 (833) 460-5606
Text "91COP" to 80123



[RCTC.org/91COP](https://rctc.org/91COP)



91COP@RCTC.org



[@theRCTC](#)

Riverside County Transportation Commission | 4080 Lemon Street, 3rd Floor, Riverside, CA 92501

[Unsubscribe {recipient's email}](#)

[Update Profile](#) | [Constant Contact Data Notice](#)

Sent by 91cop@rctc.org powered by



Try email marketing for free today!

Constant Contact