



## State Route 91 CORRIDOR OPERATIONS PROJECT



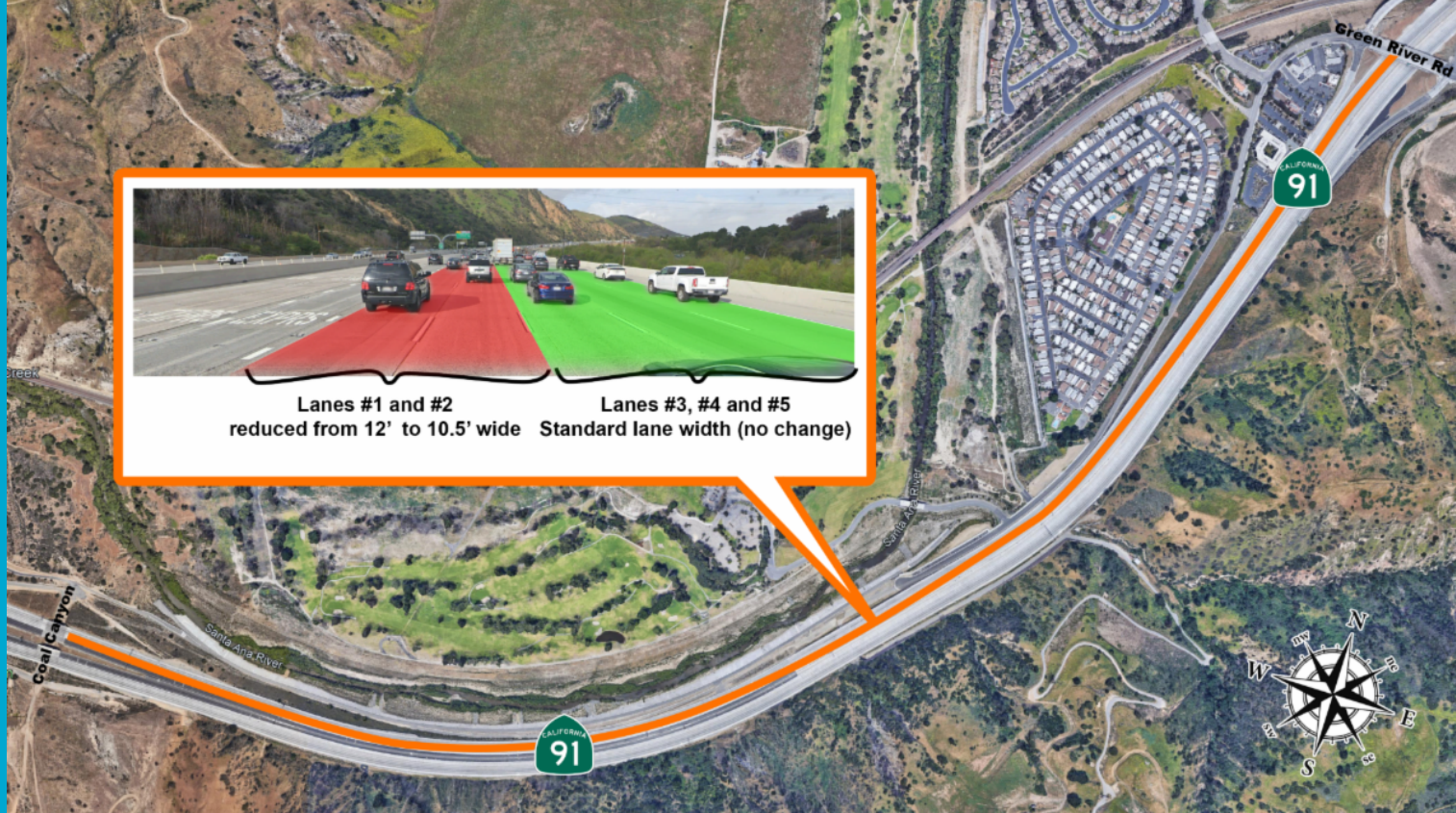
[View as PDF](#)

## Special Construction Update: October 20, 2021

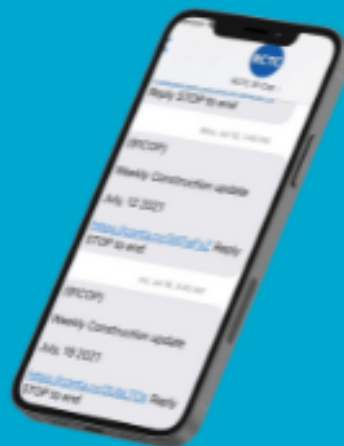
### **91 Lane Widths to be Narrowed Nighttime Lane Closures**

Starting Thursday night, October 21, the 91 westbound lanes between Green River Road and Coal Canyon will be reduced in width. The #1 and #2 lanes (adjacent to the 91 Express Lanes) will be reduced to 10.5 feet wide. The #3, #4, and #5 lanes will remain the same. The 91 Express Lanes widths will not change. These conditions will remain in place until December to provide room for crews to build the new westbound 91 lane next to the outer shoulder.

Nighttime lane closures will begin October 21 at 8 p.m. to allow crews to restripe the lanes. The narrower lanes will be in place on that night. Please watch for changeable message signs about upcoming narrower lanes and always signal before changing lanes. The speed limit through the construction zone is 55 mph.



**Text 91COP**  
**to 80123**  
for text  
message updates



**Weekly View From Above**





## SART Temporary Parking



### Temporary Santa Ana River Trail Parking Relocation

The parking lot at the Santa Ana River Trailhead near Green River Road will remain temporarily closed for the safety of trail users and construction crews. Please use the upper parking lot at 4740 Green River Road. Do not park at the Green River Golf Club; parking is for club patrons only. The Santa Ana River Trail will remain open during construction, and access to the trail will be provided, although some traffic control measures will be in place. Please do not enter the construction zone near the trailhead.

[Download SART Temporary Parking PDF](#)

## Project Overview



The Riverside County Transportation Commission, in partnership with Caltrans, the Orange County Transportation Authority, the Transportation Corridor Agencies, and the City of Corona, is building the 91 Corridor Operations Project. The project will add a lane to westbound 91 for approximately two miles between the Green River Road on-ramp and the southbound 241 connector. The new lane, which will be built next to the outer shoulder, will help relieve westbound traffic congestion through this heavily traveled corridor.

Please stay connected through construction updates, follow @therctc on social media, and watch for lane closures, narrower lanes, construction crews and equipment, and changing conditions on the 91 and Green River Road. Noisy work also may be required.

[Check out our project overview video!](#)

## Construction Area



## Stay Connected



1 (833) 460-5606  
Text "91COP" to 80123



[RCTC.org/91COP](https://rctc.org/91COP)



[91COP@RCTC.org](mailto:91COP@RCTC.org)



[@theRCTC](https://www.instagram.com/theRCTC)

Riverside County Transportation Commission | 4080 Lemon Street, 3rd Floor, Riverside, CA 92501

[Unsubscribe {recipient's email}](#)

[Update Profile](#) | [Constant Contact Data Notice](#)

Sent by [91cop@rctc.org](mailto:91cop@rctc.org) powered by



Try email marketing for free today!