



Riverside-Downtown
STATION IMPROVEMENTS

Riverside Downtown Station

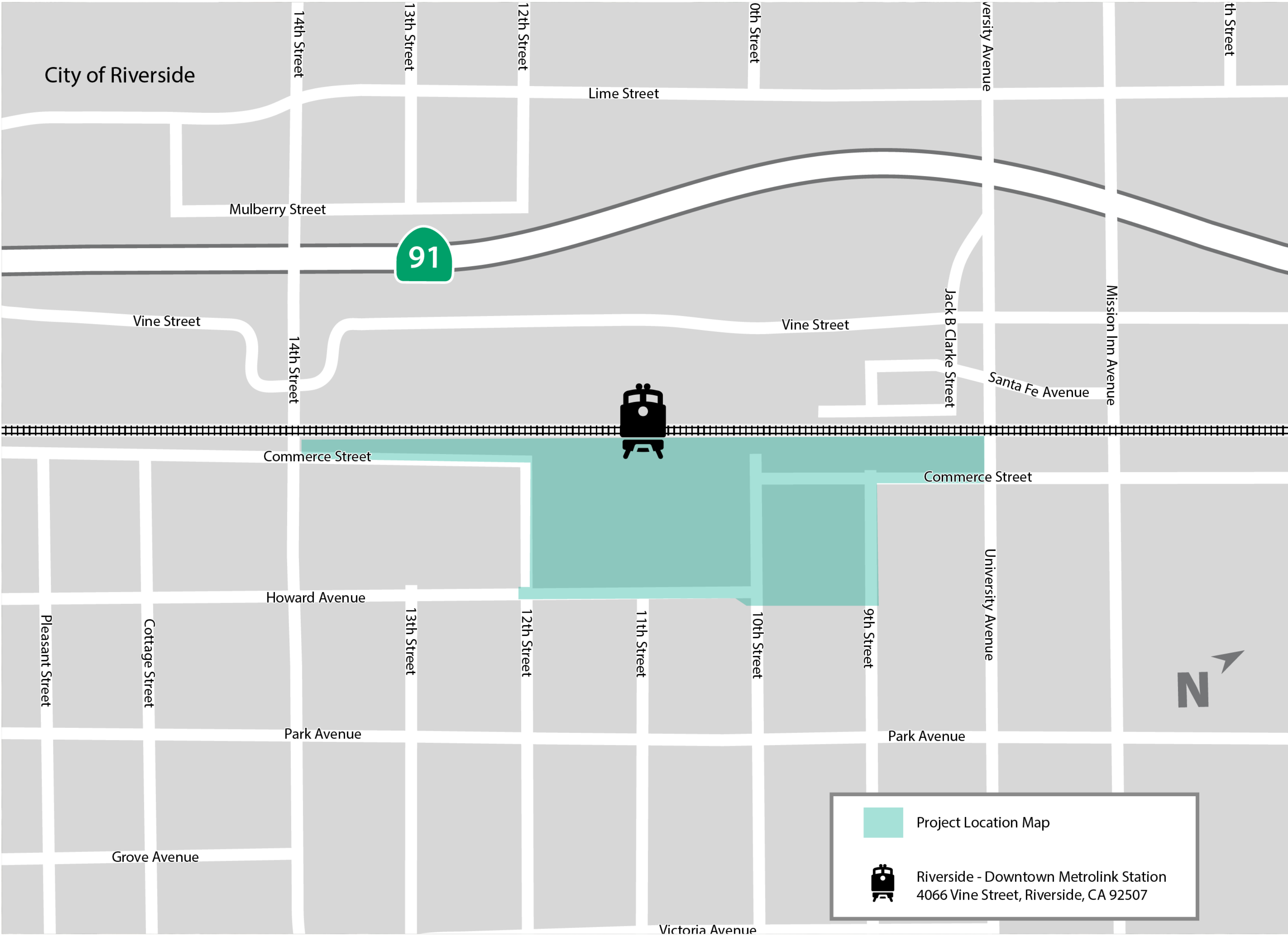


Riverside Unified School District - Eastside Neighborhood School

Tuesday, June 15, 2021
1:00 p.m.



Project Location Map



Project Objectives and Purpose

The purpose of the proposed Project is to expand capacity, improve operations and efficiency, connectivity, and the passenger experience at the Riverside-Downtown Station.

Project Objectives

- Expand platform capacity to meet passenger train storage needs
- Allow for train meets off the BNSF mainline
- Improve transit connectivity and accessibility
- Facilitate more efficient passenger flow
- Enhance safety and access for station users
- Accommodate projected future demand

Project Schedule

*We are
Here*

Scoping

January 2020 -
February 2020

Prepare Technical Studies

February 2020 -
May 2021

Prepare Draft Environmental Document

September 2020 -
September 2021

Circulation of Draft Environmental Document

October 2021 -
December 2021

Public Hearing

November 2021

Response to Comments

December 2021 -
May 2022

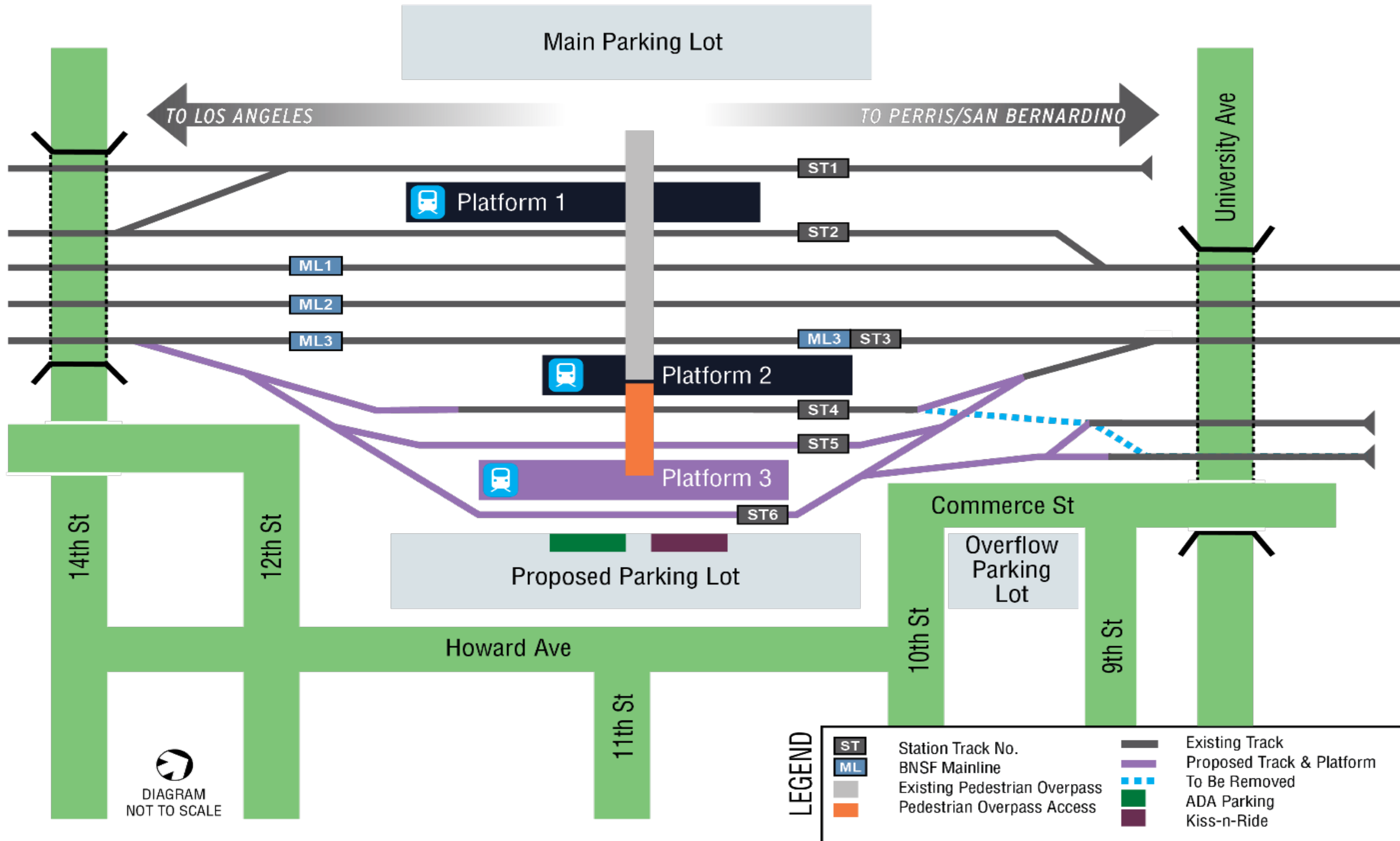
Prepare Final Environmental Document

March 2022 -
August 2022

Potential Approval of Final Environmental Document

September 2022

Proposed Station Improvements

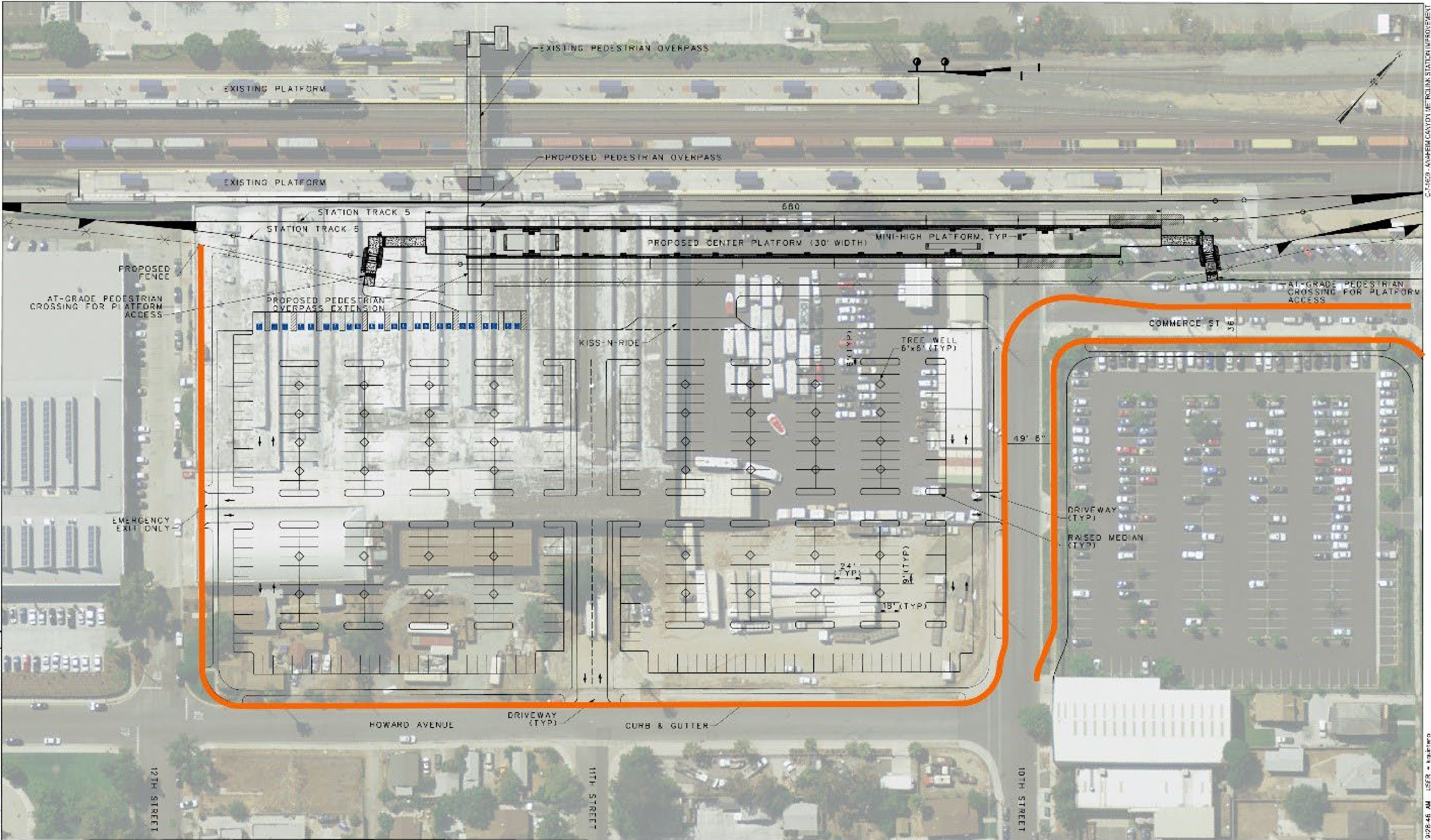


Project Improvements

| Element | Description |
|---|---|
| Station Platform and Track Improvements | <ul style="list-style-type: none">• Add a new center platform• Add new tracks• Modify the railroad signal system |
| Pedestrian Access Improvements | <ul style="list-style-type: none">• Extend pedestrian access to the new platform• Provide emergency egress at three locations |
| Parking, Circulation, and Streetscape Improvements | <ul style="list-style-type: none">• Relocate ADA parking• Modify the bus drop-off area• Add sidewalks and trees• Add up to 560 additional parking spaces |



Build Alternative - Design Option 1A



DRAFT FOR INFORMATION ONLY



RIVERSIDE DOWNTOWN STATION EXPANSION
ALTERNATIVE 1A

| | |
|-------|-----------|
| DATE | 8/19/2020 |
| SCALE | 1" = 40' |
| SHEET | 1 OF 6 |

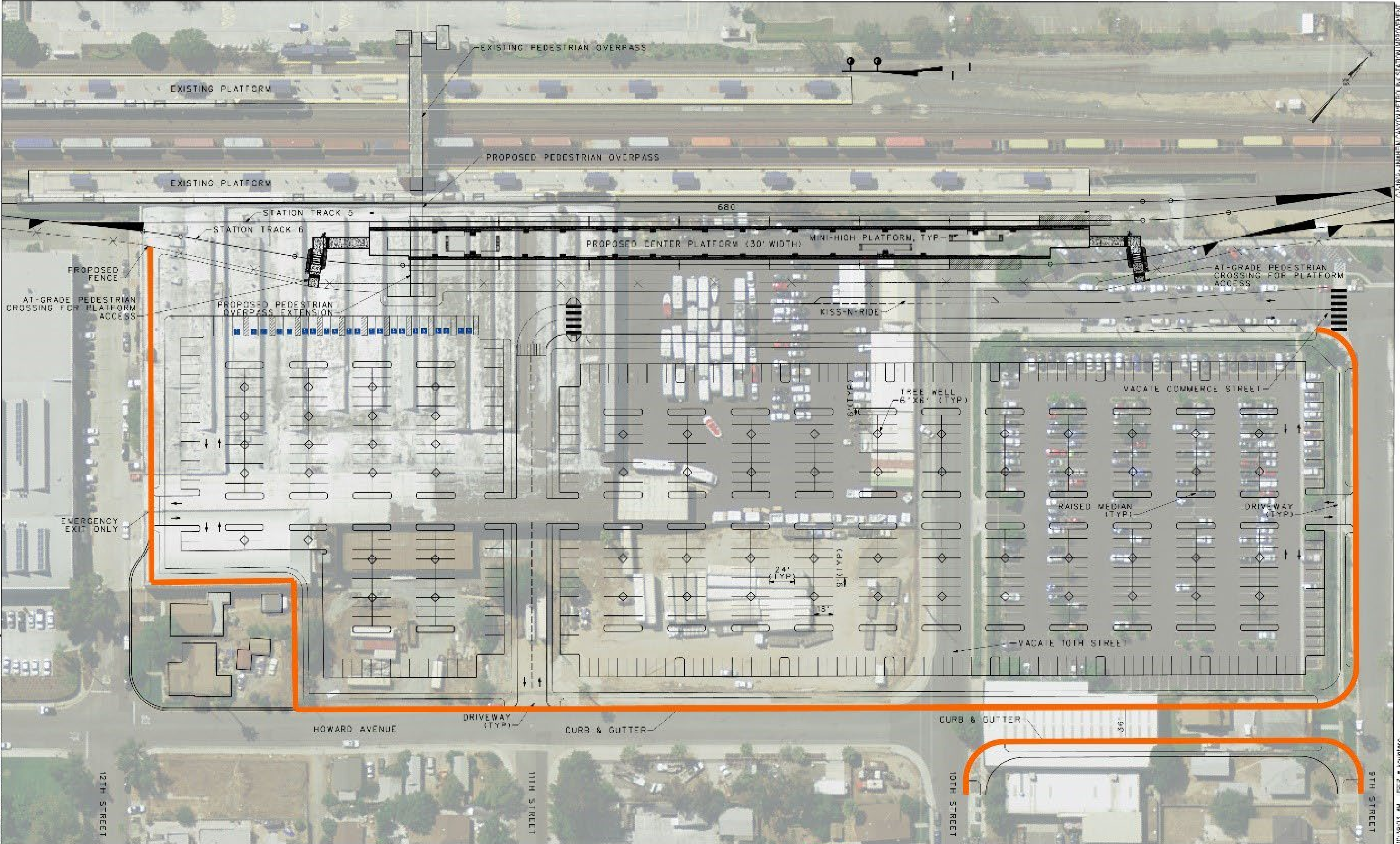
8/26/2020 9:08:46 AM USER = kgrahner







Build Alternative - Design Option 2B



DRAFT FOR INFORMATION ONLY



HNTB

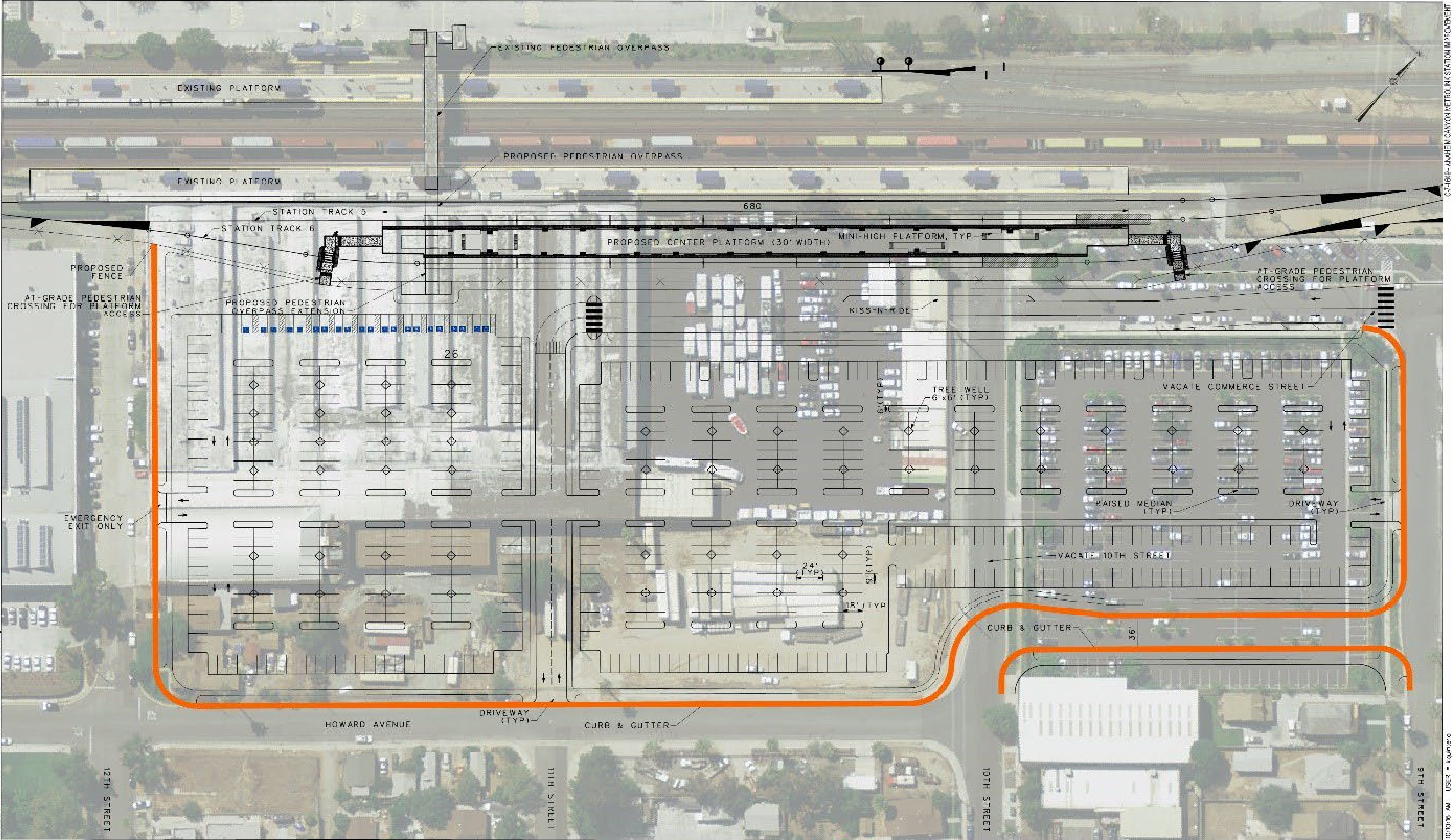
RIVERSIDE DOWNTOWN STATION EXPANSION
ALTERNATIVE 2B

| | |
|-------|-----------|
| DATE | 8/19/2020 |
| SCALE | 1" = 40' |
| SHEET | 4 OF 6 |

03-1003-ARNDEN CANYON METROLINK STATION IMPROVEMENT 10/30/2019 REV 10/30/2019



Build Alternative - Design Option 3A



DRAFT FOR INFORMATION ONLY

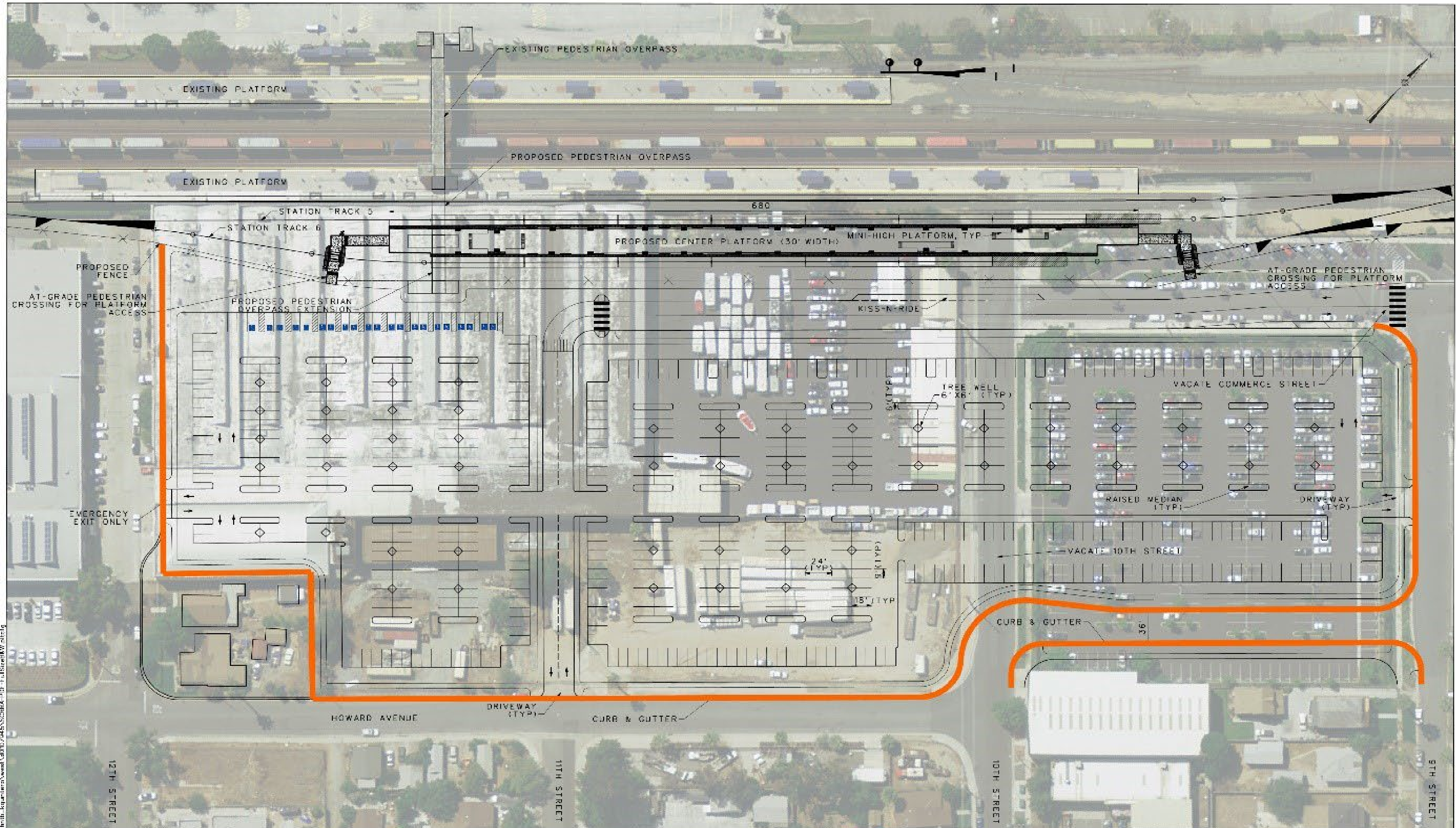


RIVERSIDE DOWNTOWN STATION EXPANSION
ALTERNATIVE 3A

| | |
|-------|-----------|
| DATE | 8/19/2020 |
| SCALE | 1" = 40' |
| SHEET | 5 OF 6 |



Build Alternative - Design Option 3B



DRAFT FOR INFORMATION ONLY



RIVERSIDE DOWNTOWN STATION EXPANSION
ALTERNATIVE 3B

| | |
|-------|-----------|
| DATE | 8/19/2020 |
| SCALE | 1" = 40' |
| SHEET | 6 OF 6 |

8/20/2020 10:42:09 AM USER: aguntero C:\BID\1\ANNEK CANYON METROLINK STATION IMPROVEMENT

Technical Studies

The following Technical Studies are in Progress:

- Aesthetics/Visual
- Air Quality/Greenhouse Gases
- Biological Resources
- Cultural (Historic & Archaeology)
- Community/Section 4(f)
- Energy
- Geotechnical
- Hazardous Waste/Materials
- Noise/Vibration
- Paleontological Resources
- Relocation Impacts
- Stormwater/Water Quality
- Traffic Analysis



Questions/Comments

Stay Connected



Questions/Comments received during this meeting will be summarized into the comments and coordination section of the Draft EIR/EA



Email to stationproject@rctc.org



Mail comments to:

David Lewis, Capital Projects Manager
Riverside County Transportation Commission
P.O. Box 12008
Riverside, CA 92502-2208



For more information, please visit:
rctc.org/stationimprovements