



Riverside-Downtown
STATION IMPROVEMENTS

Riverside Downtown Station

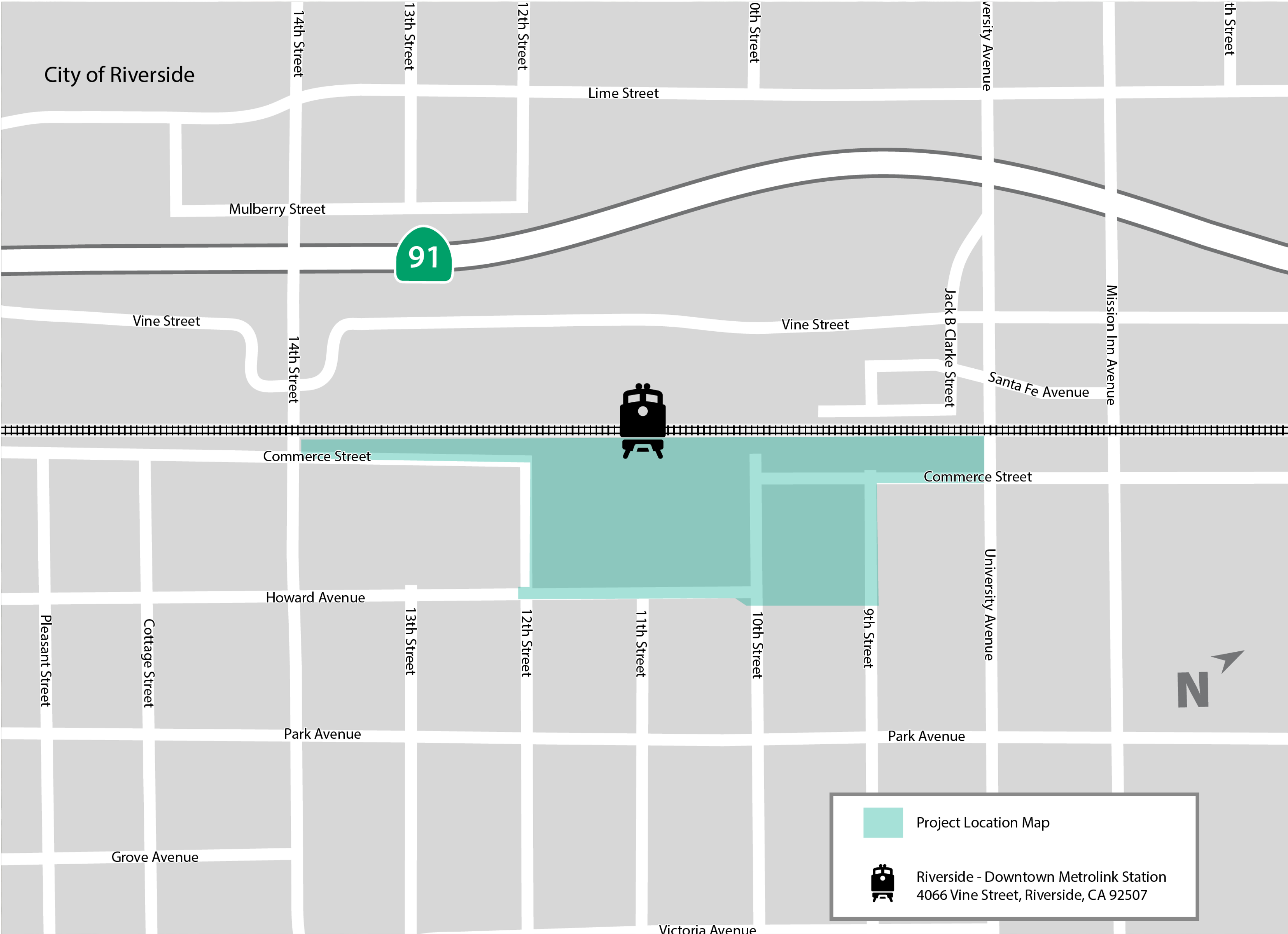


City of Riverside Mobility & Infrastructure Committee Meeting

Thursday, July 8, 2021
4:00 p.m.



Project Location Map





Project Objectives and Purpose

The purpose of the proposed Project is to expand capacity, improve operations and efficiency, connectivity, and the passenger experience at the Riverside-Downtown Station.

Project Objectives

- Expand platform capacity to meet passenger train storage needs
- Allow for train meets off the BNSF mainline
- Improve train connectivity and passenger accessibility
- Facilitate more efficient passenger flow
- Enhance safety and access for station users
- Accommodate projected future demand

Project Schedule

*We are
Here*

Scoping

January 2020 -
February 2020

**Prepare
Technical
Studies**

February 2020 -
May 2021

**Prepare Draft
Environmental
Document**

September 2020 -
September 2021

**Circulation of
Draft
Environmental
Document**

October 2021 -
December 2021

Public Hearing

November 2021

**Response to
Comments**

December 2021 -
May 2022

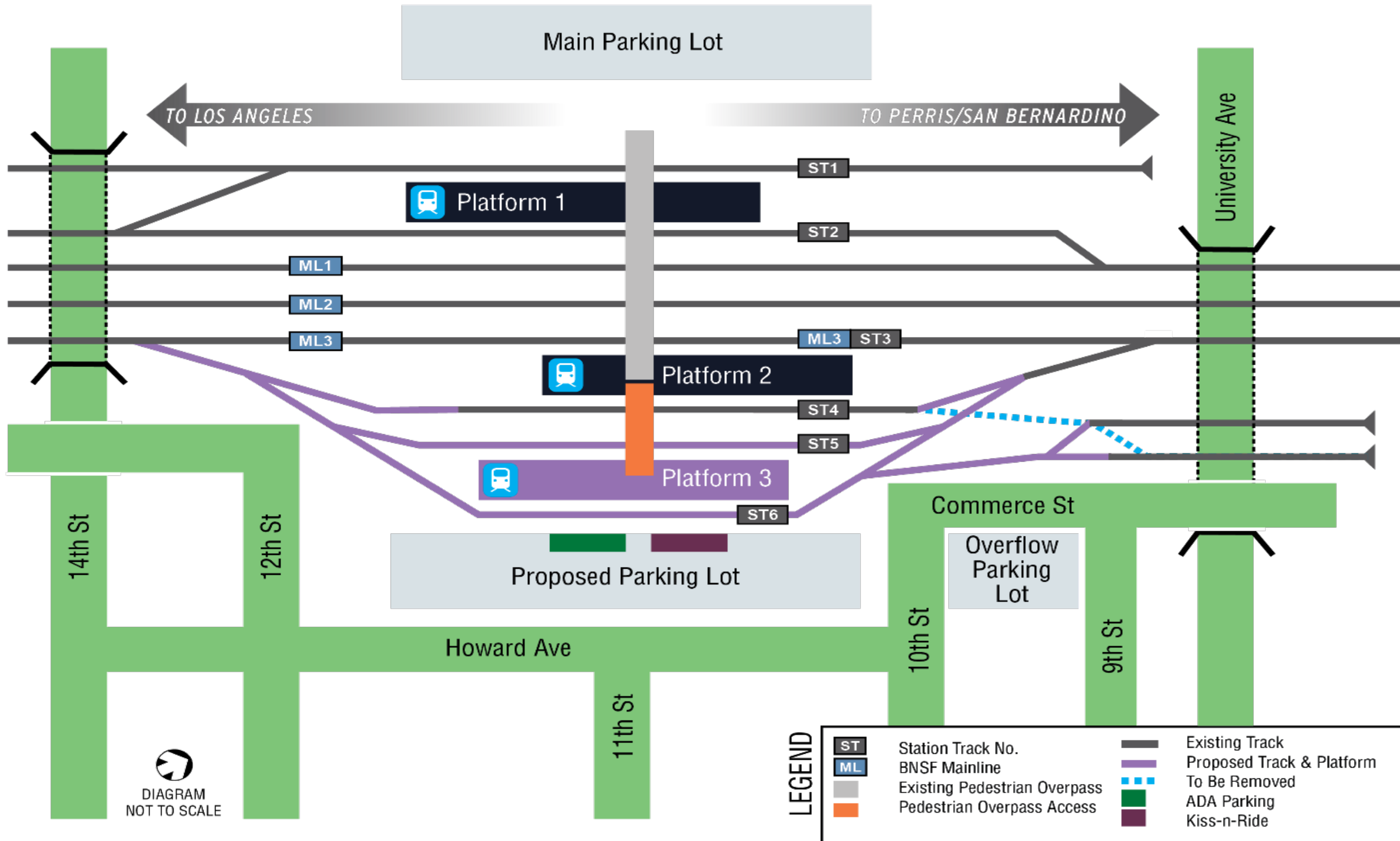
**Prepare Final
Environmental
Document**

March 2022 -
August 2022

**Potential
Approval of
Final
Environmental
Document**

September 2022

Proposed Station Improvements

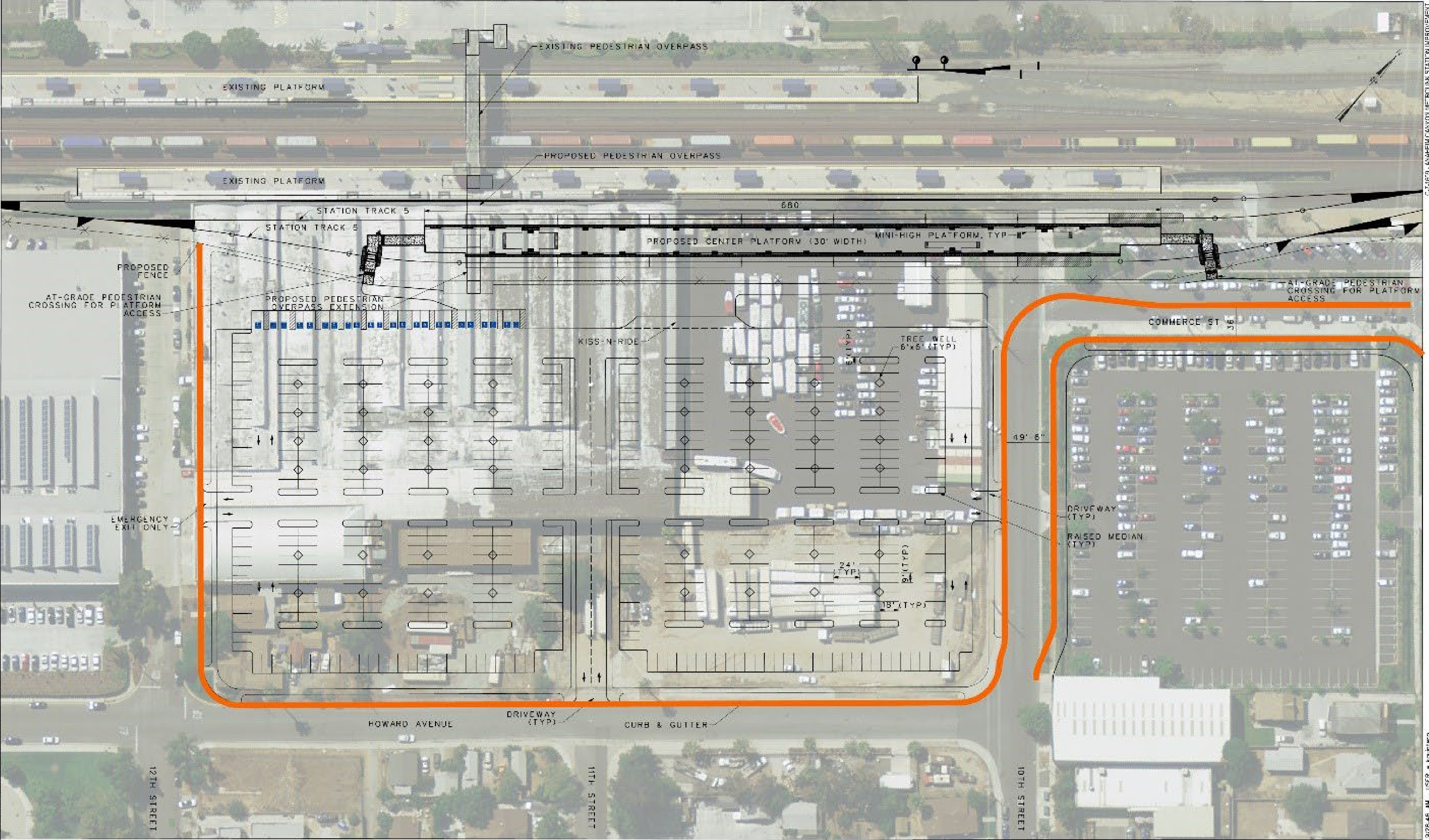


Talking Points – Project Improvements

Element	Description
Station Platform and Track Improvements	<ul style="list-style-type: none">• Add a new center platform• Add new tracks• Modify the railroad signal system
Pedestrian Access Improvements	<ul style="list-style-type: none">• Extend pedestrian access to the new platform• Provide emergency egress at three locations
Parking, Circulation, and Streetscape Improvements	<ul style="list-style-type: none">• Relocate ADA parking• Modify the bus drop-off area• Add sidewalks and trees• Add up to 560 additional parking spaces



Build Alternative - Design Option 1A



DRAFT FOR INFORMATION ONLY



RIVERSIDE DOWNTOWN STATION EXPANSION
ALTERNATIVE 1A

DATE	8/19/2020
SCALE	1" = 40'
SHEET	1 OF 6

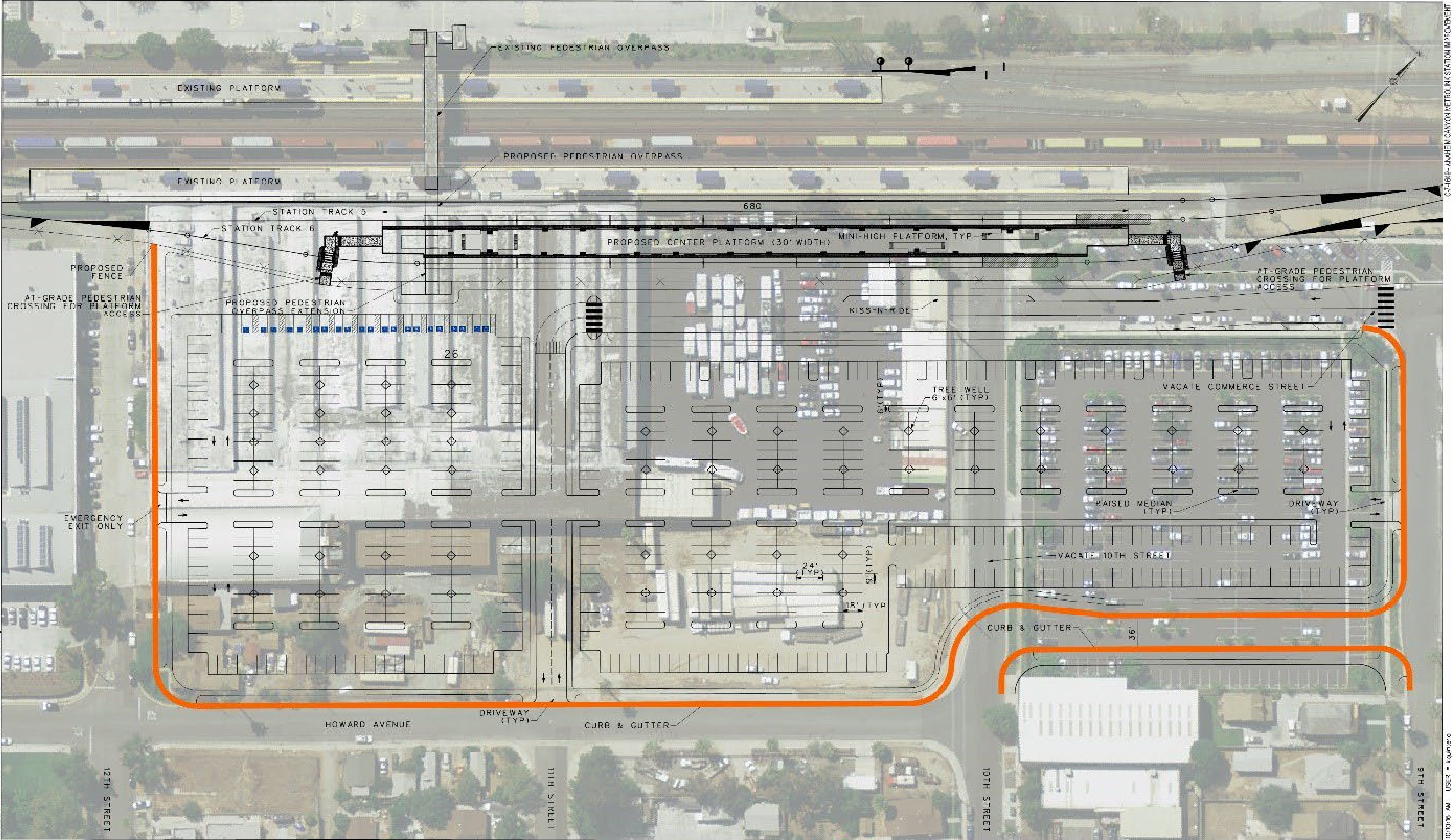








Build Alternative - Design Option 3A



DRAFT FOR INFORMATION ONLY

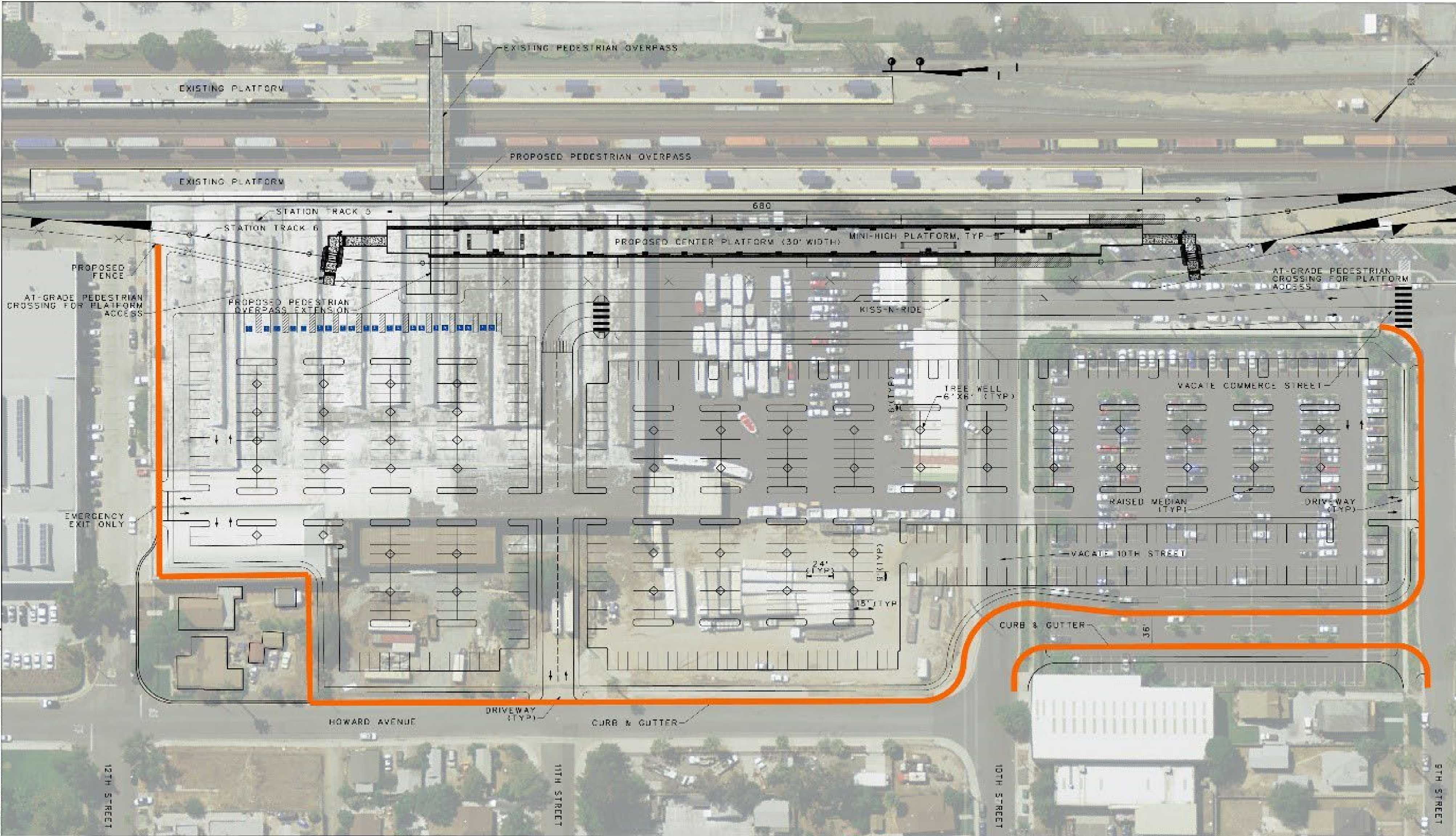


RIVERSIDE DOWNTOWN STATION EXPANSION
ALTERNATIVE 3A

DATE	8/19/2020
SCALE	1" = 40'
SHEET	5 OF 6



Build Alternative - Design Option 3B



DRAFT FOR INFORMATION ONLY



RIVERSIDE DOWNTOWN STATION EXPANSION
ALTERNATIVE 3B

DATE	8/19/2020
SCALE	1" = 40'
SHEET	6 OF 6

Technical Studies

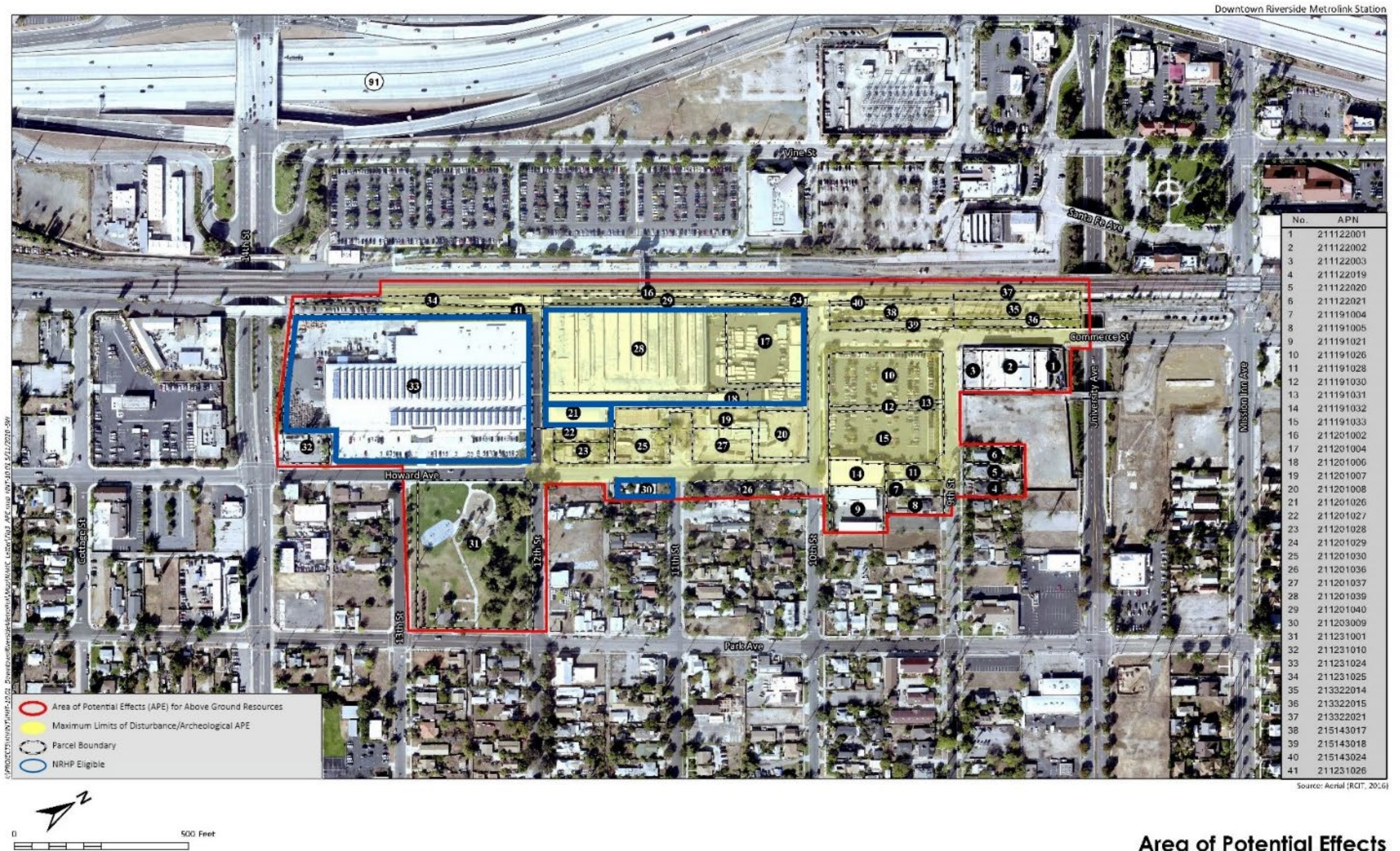
The following Technical Studies are in Progress:

- Aesthetics/Visual
- Air Quality/Greenhouse Gases
- Biological Resources
- Cultural (Historic & Archaeology)
- Community/Section 4(f)
- Energy
- Geotechnical
- Hazardous Waste/Materials
- Noise/Vibration
- Paleontological Resources
- Relocation Impacts
- Stormwater/Water Quality
- Traffic Analysis



- **Identification of Historic Properties**
 - **Area of Potential Effects**
 - **Cultural Resources Identified**
 - **Resources Potentially Impacted**
- **Avoidance Alternatives Under Consideration**
- **Adaptive Reuse (Full and Partial Reuse)**

Area of Potential Effects



NRHP-Eligible Resources in APE

- There are 12 previously recorded historic resources and seven newly-recorded historic resources in the APE.
- Of these resources, only two are considered NRHP-eligible Historic Properties:
 - Food Machinery Corporation (FMC) Complex
 - Howard Avenue worker's houses



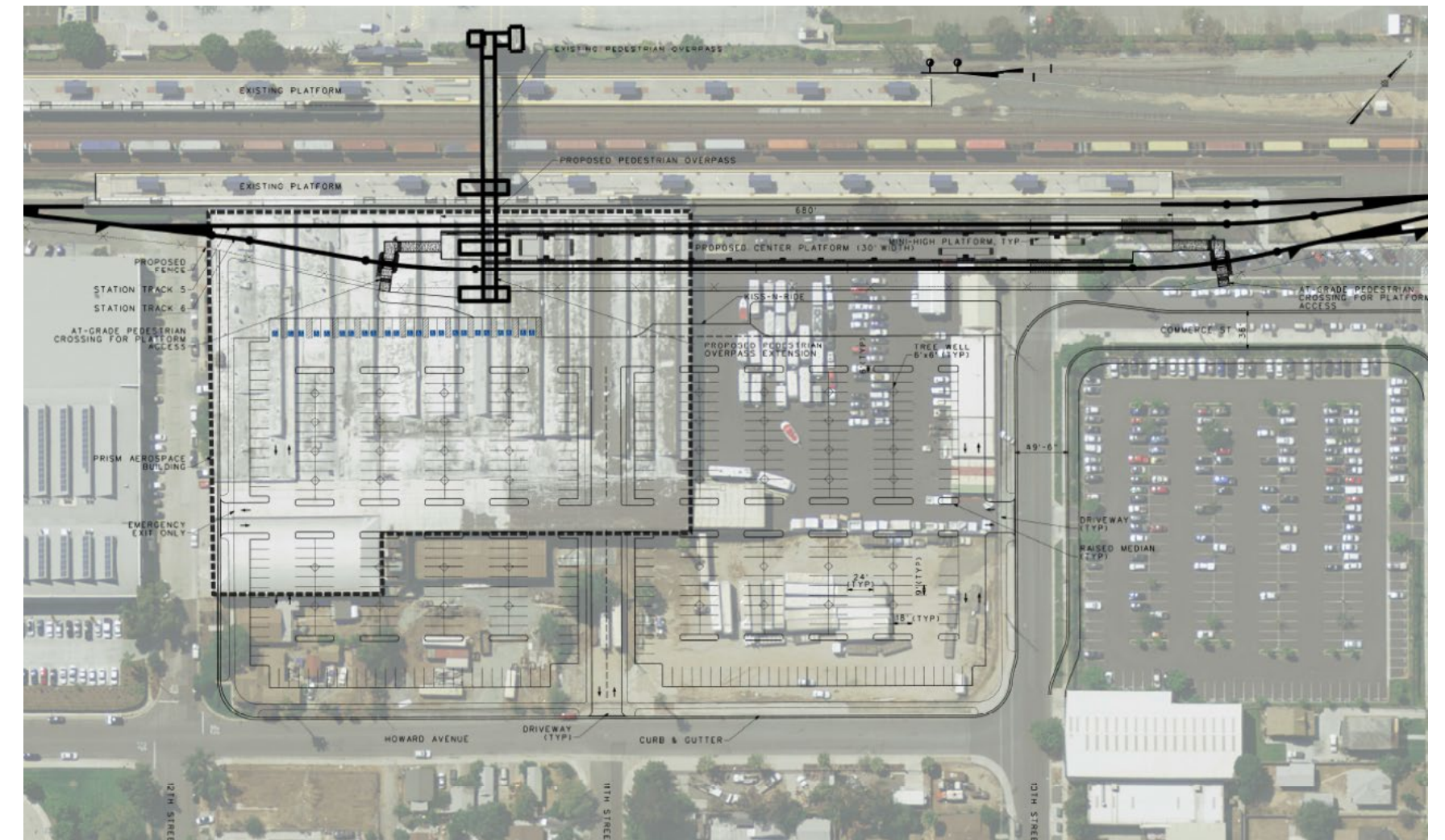
Avoidance Alternatives

Avoidance alternatives were considered:

- **New Platform and Tracks on the West Side of the Existing Station**
 - Challenges include connectivity issues with PVL trains, removal of layover tracks, new bridge over 14th Avenue
- **New Platform and Tracks on the East Side of the Existing Station**
 - Challenges include stub-ended configuration, widening existing bridge over University Avenue, grade-separating Mission Inn Avenue
- **New Platform and Tracks on the East Side of the Existing Station (east of 14th Street)**
 - Challenges include impacts to BNSF operations, ROW

Full and Partial Reuse

- Timber frame construction with timber trusses pinned to concrete slab foundation
- Would require extensive alterations to timber columns and truss members
- Primary, historic character-defining features would be lost
- Would not retain integrity and meet SOIS standards for rehabilitation
- Nearly 100 years of previous industrial uses left behind hazardous waste/materials





Questions/Comments

Stay Connected



Questions/Comments received during this meeting will be summarized into the comments and coordination section of the Draft EIR/EA



Email to stationproject@rctc.org



Mail comments to:

David Lewis, Capital Projects Manager
Riverside County Transportation Commission
P.O. Box 12008
Riverside, CA 92502-2208



For more information, please visit:
rctc.org/stationimprovements