



Riverside-Downtown
STATION IMPROVEMENTS

Riverside Downtown Station

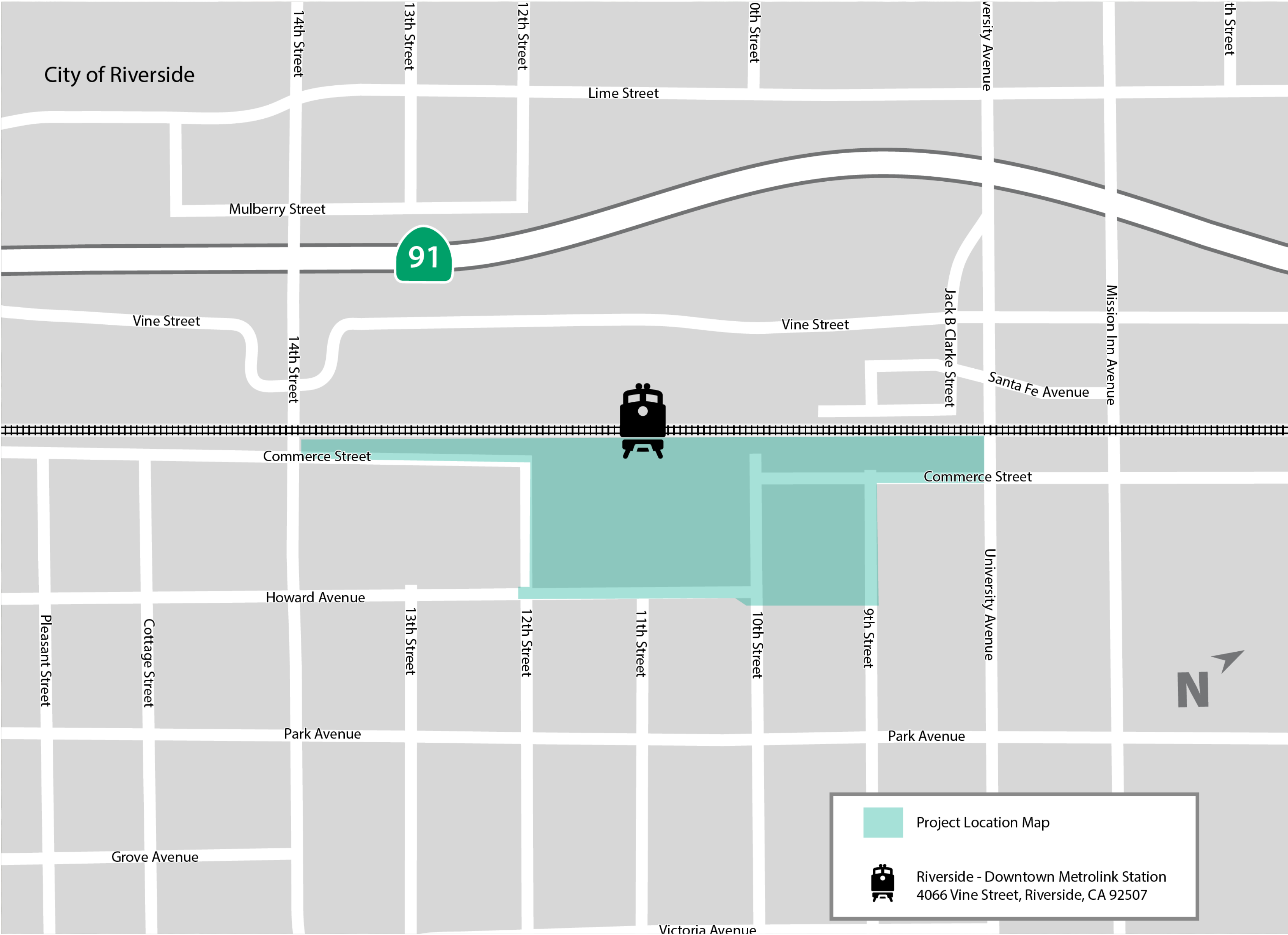


Old Riverside Foundation Board Meeting

Thursday, May 6, 2021
6:00 p.m.

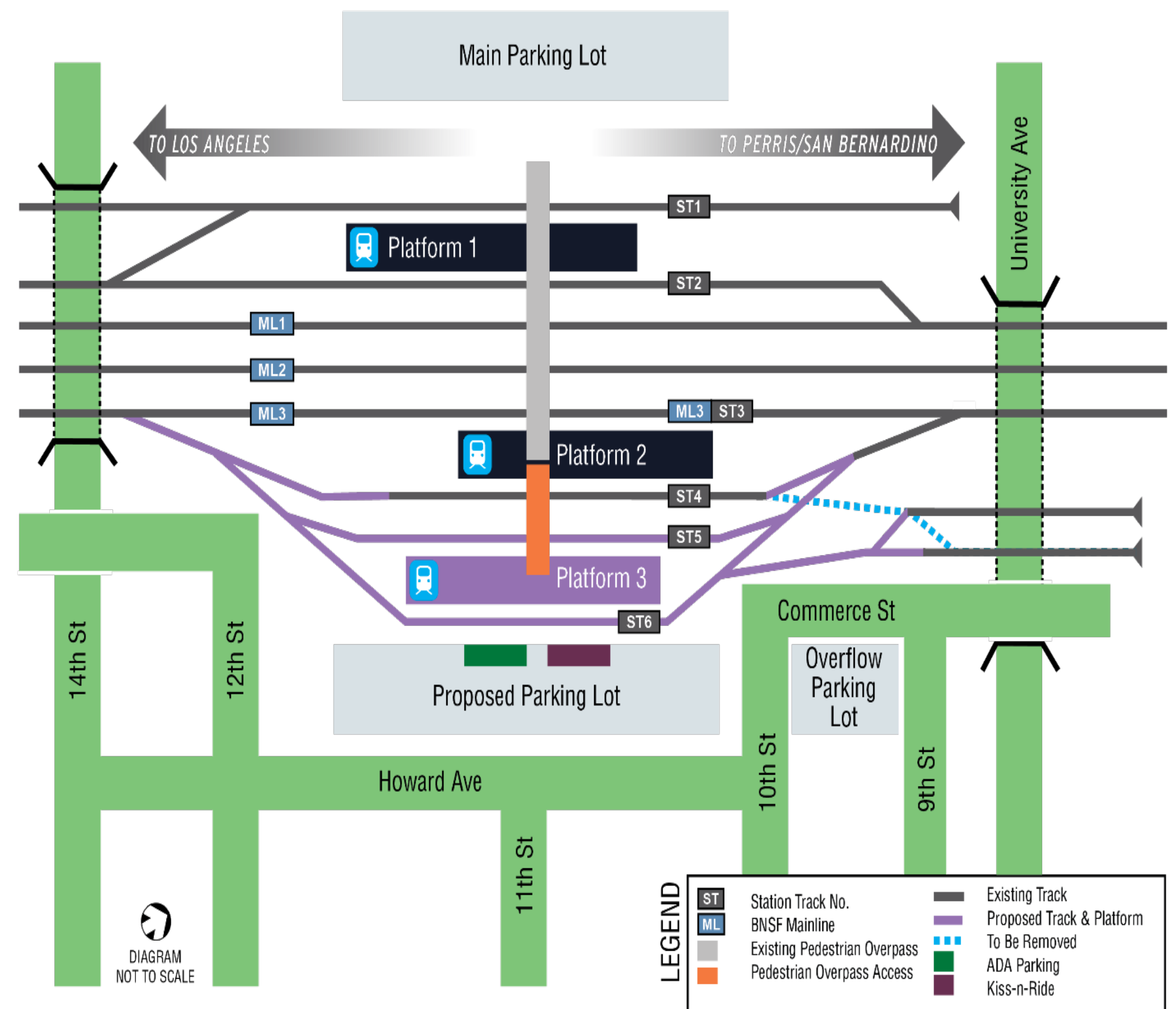


Project Location Map



New Station & Planned Amenities

Shelters
Extension of Pedestrian
Overcrossing
Elevator
Improved Train Meet Times
Parking Lot (~560 spaces)



Project Schedule

*We are
Here*

Scoping

January 2020 -
February 2020

Prepare Technical Studies

February 2020 -
May 2021

Prepare Draft Environmental Document

September 2020 -
September 2021

Circulation of Draft Environmental Document

October 2021 -
December 2021

Public Hearing

November 2021

Response to Comments

December 2021 -
May 2022

Prepare Final Environmental Document

March 2022 -
August 2022

Approve Final Environmental Document

September 2022



Cultural Resources Update

- **Identification of Historic Properties**
 - Area of Potential Effects
 - Cultural Resources Identified
 - Resources Potentially Impacted
- **Avoidance Alternatives Under Consideration**
 - Nine Alternatives (Reuse)
- **Technical Reports and Studies are in Progress**
- **Draft Environmental Document**
 - Public Circulation of Draft EIR/EA:
Anticipated October – December 2021

Plant 1: Adaptive Reuse

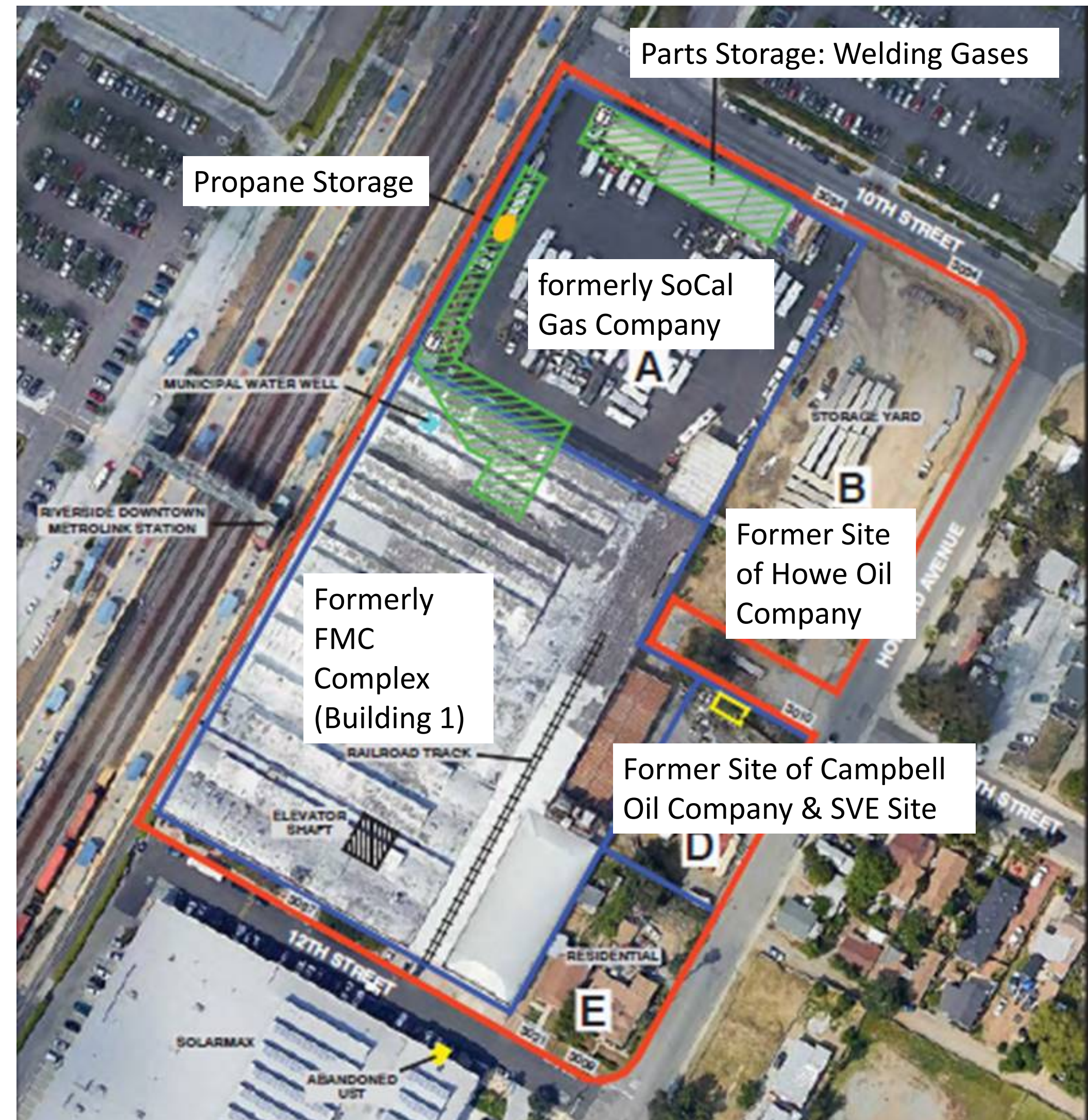
Adaptive Reuse: Full and Partial Reuse of Plant 1

- **Timber Frame Construction with Timber Trusses pinned to Concrete Slab Foundation:**
 - In order for the structure to be reused, the timber columns and truss members would need to be encapsulated in fireproof materials, such as concrete.
 - Alterations would destroy primary, character-defining features
 - Partial Reuse would have same challenges

FMC Complex – Plant 1

Adaptive Reuse

- Nearly 100 Years of Previous Industrial Uses Left Behind Environmentally Toxic Materials
- Environmental Remediation is Cost Prohibitive
- Partial Reuse would have same challenges



LEGEND

—	SITE BOUNDARY		LUC AREAS
—	AREAS OF INTEREST		LUC
●	WATER WELL		SVE
T	PAD MOUNTED TRANSFORMER		UST
		3087	LAND USE CONVENANT
			SOIL VAPOR EXTRACTION
			UNDERGROUND STORAGE TANK
			STREET ADDRESS

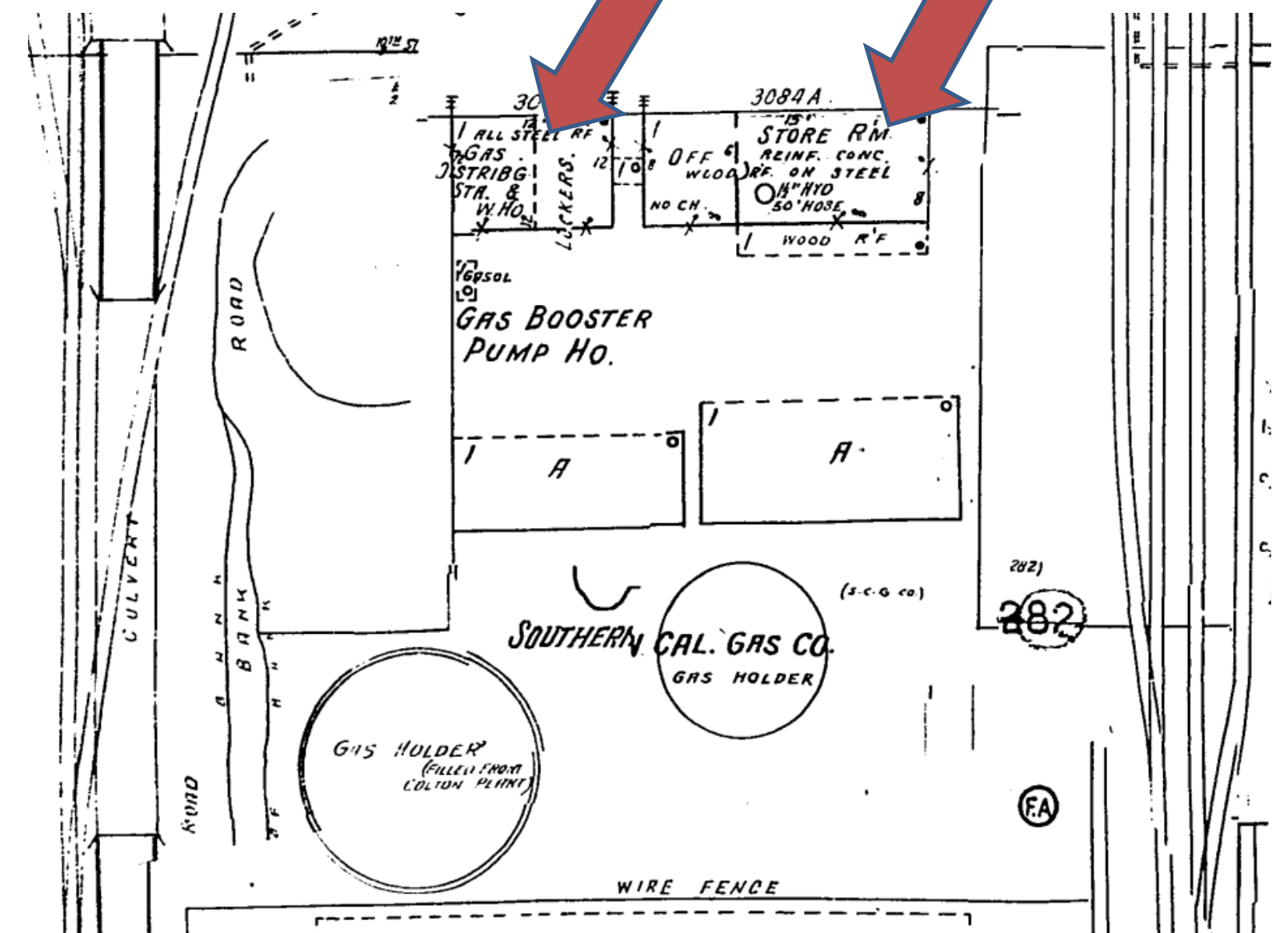
NOTE: DIMENSIONS, DIRECTIONS AND LOCATIONS ARE APPROXIMATE. | REFERENCE: GOOGLE EARTH, 2018.



FMC Complex: Bldgs K & M

3084 10th Street:

- Historically it was the SoCal Gas Co.
- Now part of FMC Complex, Plant 1 (Bldgs K& M)
- Currently used as office space and equipment storage
- Giant, round, metal tank has been removed



Historic Homes in the Project Area

- **Ninth Street Conservation Area**
 - **Ninth Street Between Howard Avenue and Kansas Street**
 - **Small, single-family residences**
 - **1880s to early 20th Century**
- **Howard Ave. and 12th Street Houses**
 - **Workers Houses**
 - **Small, Single Family Residences**
 - **Potential noise, setting, and atmospheric impacts would result when Plant 1 is removed**





Summary

- **Identified Historic Properties in the Area of Potential Effects**
- **Historic Resources Impacts are Being Evaluated**
- **Avoidance Alternatives are being Consideration**
 - **Nine Alternatives**
 - **Full and Partial Adaptive Reuse**
- **Technical Reports and Studies are in Progress**
- **Draft Environmental Document**
 - **Public Circulation of Draft EIR/EA:
Anticipated October – December 2021**

Stay Connected



Questions/Comments received during this meeting will be summarized into the cultural resources studies



Email to stationproject@rctc.org



Mail comments to:

David Lewis, Capital Projects Manager
Riverside County Transportation Commission
P.O. Box 12008
Riverside, CA 92502-2208



For more information, please visit:
rctc.org/stationimprovements



Riverside-Downtown
STATION IMPROVEMENTS

Bullpen

Masonic Lodge #13

Masonic Lodge #13

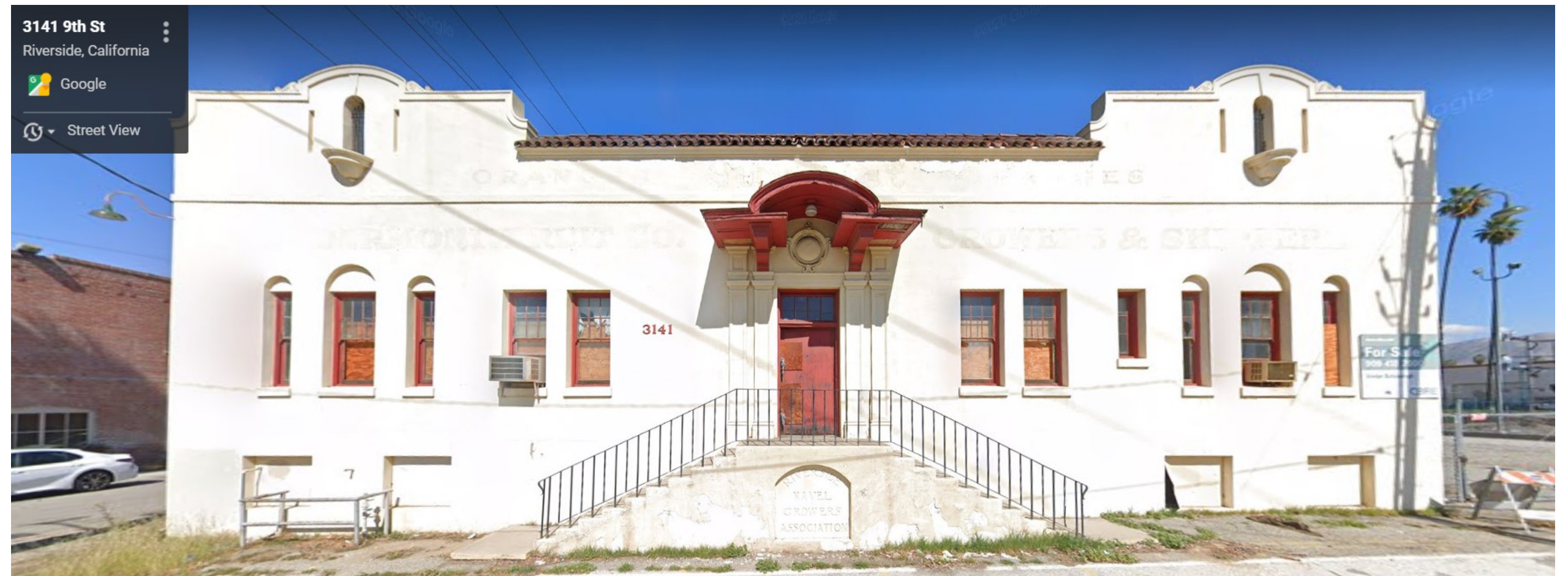
- Outside the APE
- Part of the Eastside Neighborhood
- One of the first Black-owned businesses
- Upstairs had a meeting hall and served as a community gathering place. The lodge offered housing to Black servicemen during WWII



Packing House Fire

Riverside Navel Growers/McDermont/Sunkist Packing House

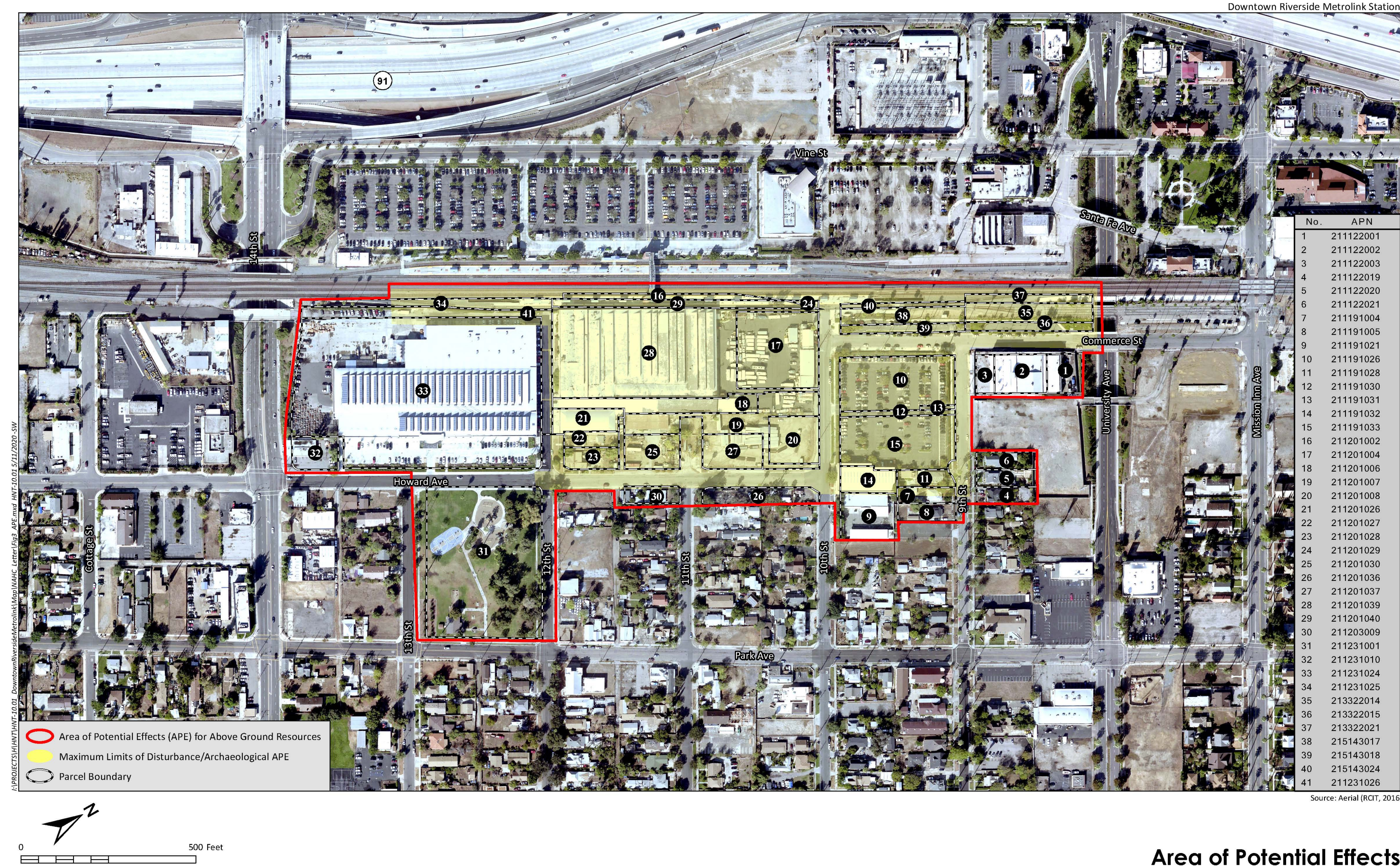
- Outside the APE
- 3141 9th Street
- Represented Citrus Industry History
- Built in 1923
- Destroyed by fire in 2021





Area of Potential Effects

Downtown Riverside Metrolink Station



Area of Potential Effects
Figure 3

Historic Eastside

