



State Route 91
**CORRIDOR OPERATIONS
PROJECT**



[View as PDF](#)

Construction Update: Week of June 7, 2021

Nighttime Lane & Green River Rd. Closures

Ongoing closures of the #3, #4, #5 lanes on westbound 91 from Green River Rd. to the 241 Toll Road are needed for the safety of construction workers and motorists. These lanes will be closed as needed, Monday-Thursday nights from 9 p.m. to 4 a.m. and Friday nights between 10 p.m. to 5 a.m. Please allow extra travel time.

Green River Rd. may be closed from the Green River Village Mobile Home Park entrance to the Green River Golf Club Monday-Friday nights from 8 p.m. to 5:30 a.m. There will be no access to the Green River Golf Club or the Santa Ana River Trail during these closures. Access to the mobile home park will not be affected. Daytime flagging may also be required on Green River Rd. starting at 6:30 a.m. in the same vicinity.

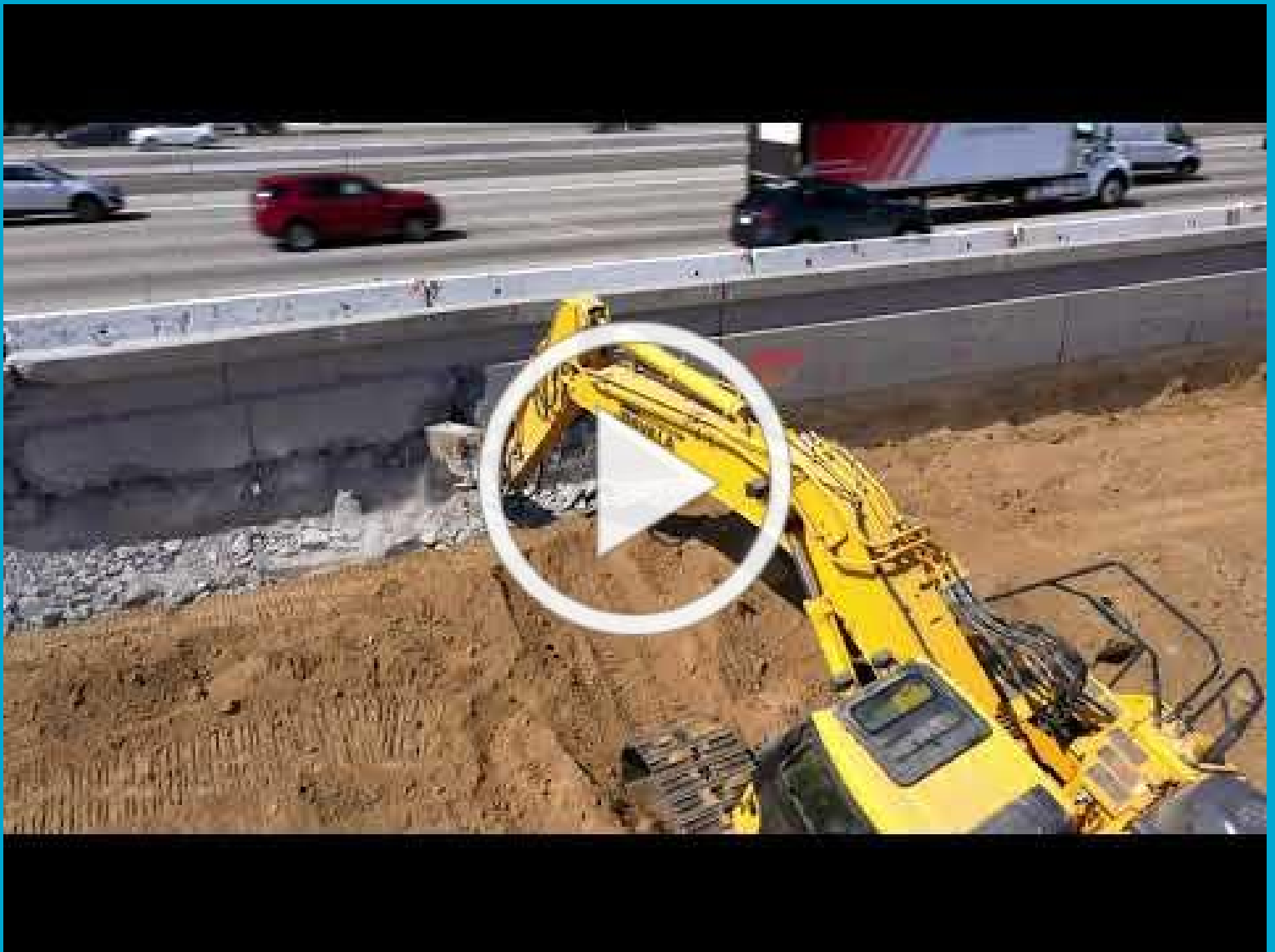
Construction activity is subject to change. Please watch for updates and follow [@therctc](#) on social media or sign up by texting 91COP to 80123.

**Text 91COP to
80123**

to sign up for text
message updates



Weekly View from Above



Project Overview

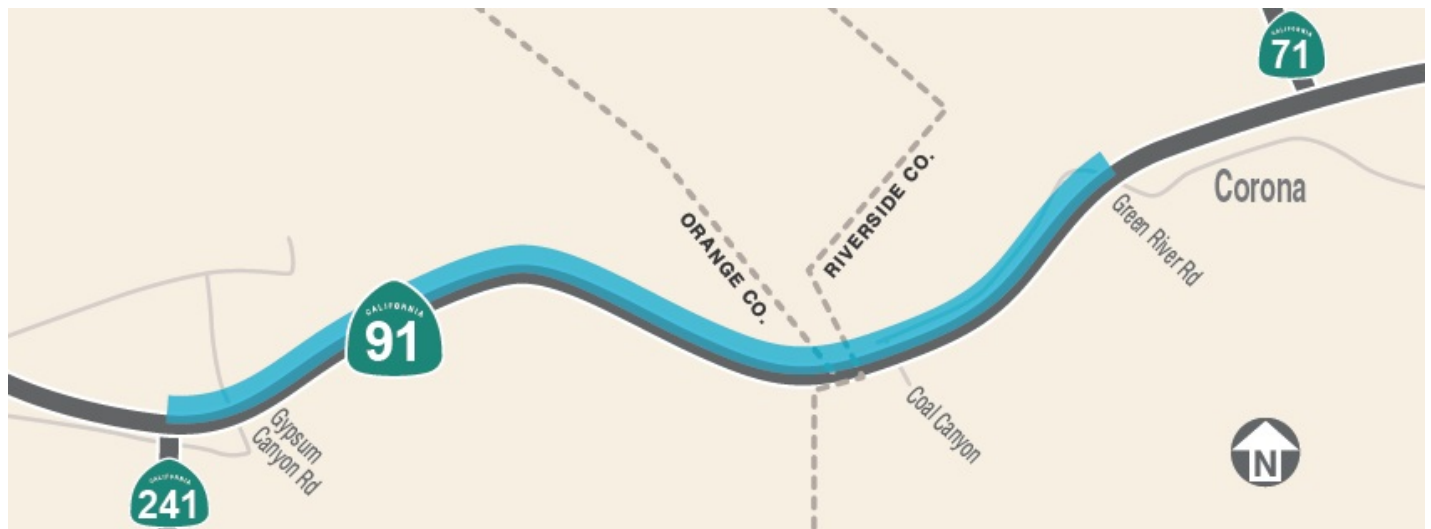


The Riverside County Transportation Commission, in partnership with Caltrans, the Orange County Transportation Authority, the Transportation Corridor Agencies, and the City of Corona, is building the 91 Corridor Operations Project. The project will add a lane to westbound 91 for approximately two miles between the Green River Road on-ramp and the southbound 241 connector. The new lane, which will be built next to the outer shoulder, will help relieve westbound traffic congestion through this heavily traveled corridor and is expected to open in late 2021.

Please stay connected through construction updates, follow @therctc on social media, and watch for lane closures, narrower lanes, construction crews and equipment, and changing conditions on the 91 and Green River Road. Noisy work also may be required.

[Check out our project overview video!](#)

Construction Area



Stay Connected



1 (833) 460-5606
Text "91COP" to 80123



RCTC.org/91COP



91COP@RCTC.org



[@91COP](#)

Riverside County Transportation Commission | 4080 Lemon Street, 3rd Floor, Riverside, CA 92501

[Unsubscribe {recipient's email}](#)

[Update Profile](#) | [Constant Contact Data Notice](#)

Sent by 91cop@rctc.org powered by



Try email marketing for free today!