



State Route 60 TRUCK LANES



Construction Update: Week of January 13, 2020

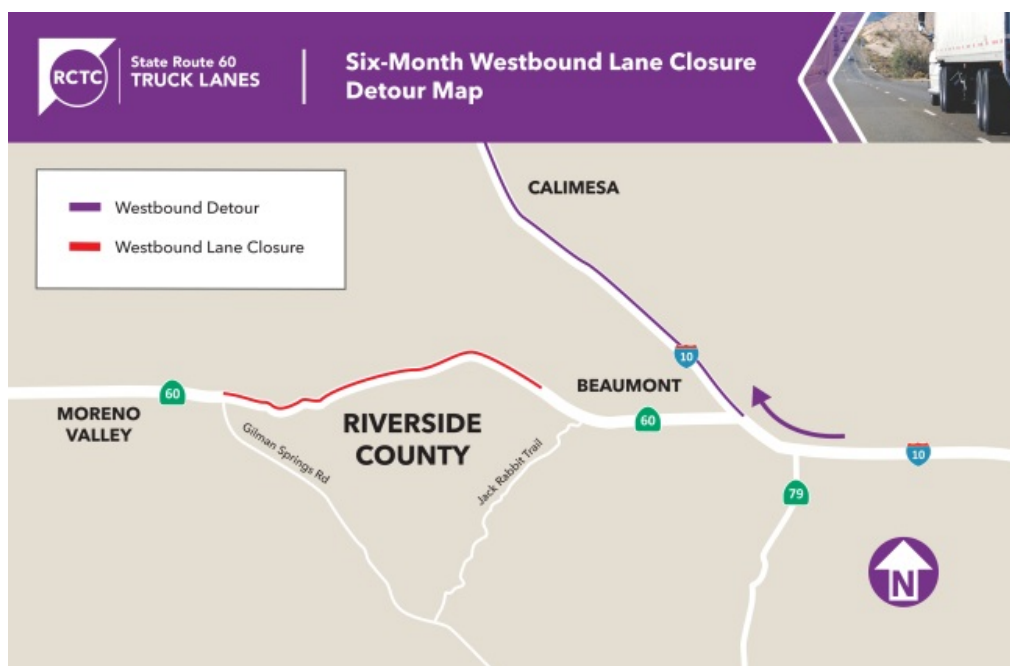
[Para español](#)

No traffic breaks or closures are planned the week of January 13, other than the six-month westbound lane closure noted below. However, construction activity is subject to change, due to weather and other factors, and periodic nighttime lane closures could occur.

Stay connected on our social media pages (@60TruckLanes) for the latest construction updates and use mapping apps for current traffic conditions.

Reminders

One westbound lane on State Route 60 remains closed between Gilman Springs Road and 1.4 miles west of Jack Rabbit Trail. This single lane closure will be in place 24/7 until about February 2020. Expect significant delays, allow extra time, and avoid the area by using I-10 as an alternate route.

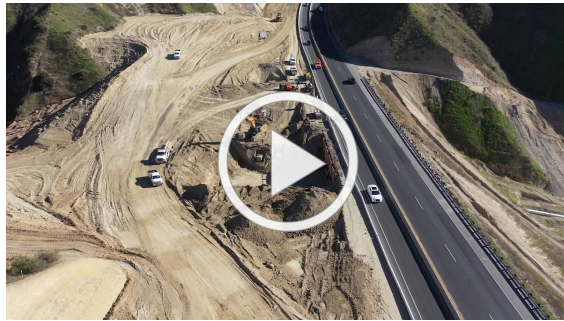


With the rainy season here, it's even more important to slow down. Please note that the speed limit is 55 mph through the project area.

Speed limit signs are posted and California Highway Patrol construction support has increased to 24/7 within the area. Please note that traffic fines will be doubled.



Project Progress

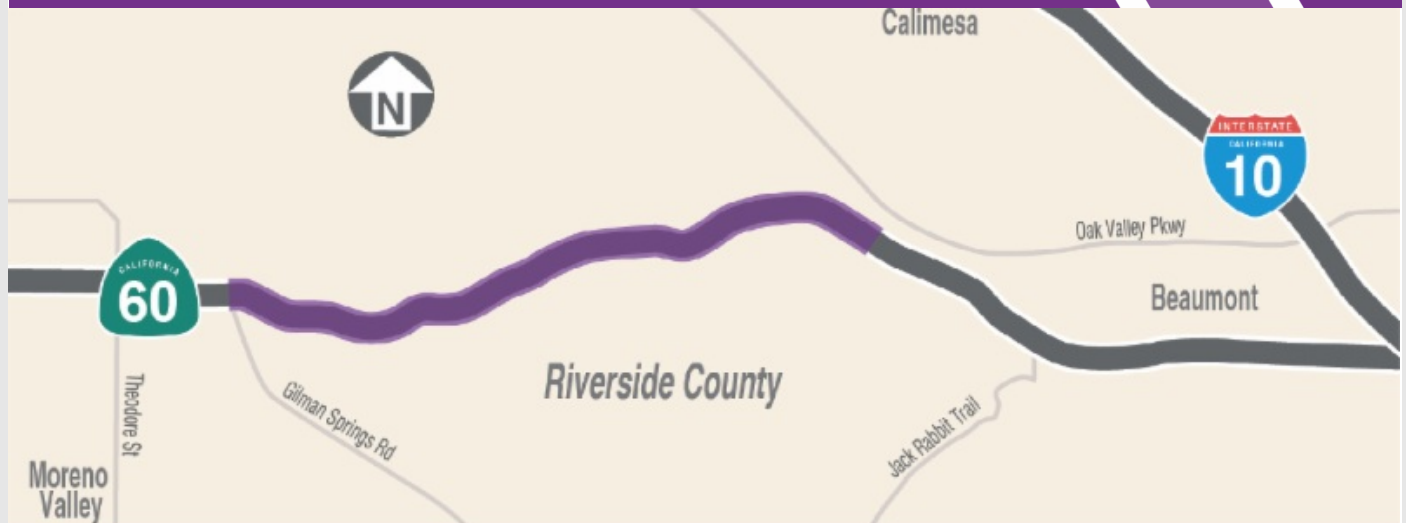


Check out our weekly view from above!

Project Background

The 60 Truck Lanes Project is widening a 4.5-mile section of State Route 60 between Gilman Springs Road and 1.4 miles west of Jack Rabbit Trail through Riverside County's Badlands between Moreno Valley and Beaumont. The project lies within mountainous terrain with a curving alignment and steep grades. The project is designed to improve safety and reduce traffic congestion. The new lanes are expected to open in late 2021.

Construction Area



Stay Connected



866.413.6060



rctc.org/60trucklanes



60trucklanes@rctc.org



[@60trucklanes](https://www.facebook.com/60trucklanes)

