



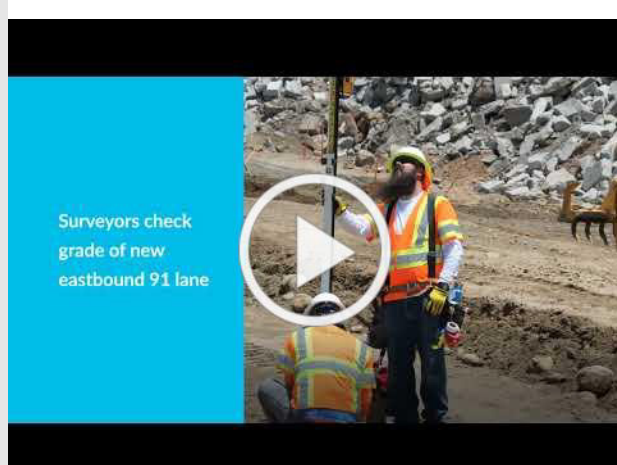
15/91  
EXPRESS LANES  
CONNECTOR

## CONSTRUCTION UPDATE

A Project of the Riverside County Transportation Commission



WEEK OF JULY 19, 2021



### Work Continues on Eastbound 91

Grab some popcorn and see our progress on the 15/91 Express Lane Connectors, which will seamlessly connect the 91 Express Lanes and the 15 Express Lanes.

## LANE & RAMP CLOSURES

Nightly closures are needed **July 19-23** to place k-rail, widen lanes, and demolish the median barrier to build the 15/91 Express Lanes Connector. See details below.

### 91 eastbound lanes reduced, Main St. to McKinley St.

- Monday, July 19 to Wednesday, July 21, nightly, 9 p.m. to 6 a.m.
- Thursday, July 22 and Friday, July 23, nightly, 10 p.m. to 6 a.m.

### 91 eastbound Main St. on-ramp closure

- Monday, July 19 to Thursday, July 22, nightly, 9 p.m. to 6 a.m.
- Friday, July 23, 10:30 p.m. to 8 a.m.

### 91 westbound lanes reduced, McKinley St. to Main St.

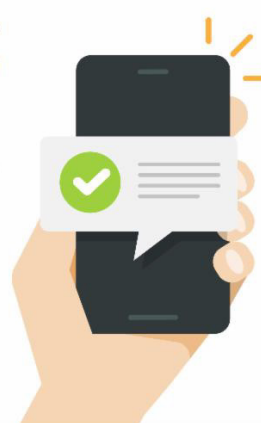
- Monday, July 19 to Thursday, July 22, nightly, 8 p.m. to 4 a.m.
- Friday, July 23, 10 p.m. to 6 a.m.

*Please note that construction activity is subject to change.*

## STRAIGHT TO YOUR MOBILE DEVICE

Text **CONNECTOR** to  
**(844) 771-0995**

to sign up for text  
message updates



## NEIGHBORING PROJECTS

**15 Slab Replacement Project:** Caltrans is replacing pavement sections on I-15 between Nichols Rd. and Route 60. Contact Caltrans Public Affairs for information.

## PROJECT OVERVIEW

The Riverside County Transportation Commission, in partnership with Caltrans, is building the 15/91 Express Lanes Connector to link the 15 Express Lanes and the 91 Express Lanes for seamless, reliable travel. New connections will be provided:

- From the eastbound 91 Express Lanes to the northbound 15 Express Lanes and
- From the southbound 15 Express Lanes to the westbound 91 Express Lanes

The project also is extending both the eastbound 91 outside general-purpose lane and the eastern end of the 91 Express Lanes approximately one-half mile east to Promenade Avenue to help with vehicle merging in this area. Construction began in April 2021 and the connector is expected to open in 2023.



Visit our website

## STAY CONNECTED



@1591Connector



rctc.org/15-91connector



(844) 415-9777



(844) 771-0995