



Interstate 15
RAILROAD CANYON
INTERCHANGE

**Construction Update:
Week of November 15, 2021**



Monday night, November 15, full closures of Railroad Canyon Rd. and the northbound I-15 on-ramp are scheduled for crews to safely lower falsework from the northbound I-15 bridge. One lane of the northbound I-15 off-ramp also will be closed, along with alternating lane closures on Grape St.

Nightly alternating lane closures are scheduled Tuesday through Friday on Railroad Canyon Rd. and Grape St. The northbound I-15 on-ramp is scheduled to be closed Tuesday night.

Construction activity is subject to change. Follow us @RailroadCanyon for the latest updates.

Ramp and Local Street Closures – Week of November 15, 2021		
Date	Time	Closure Details
Monday, November 15	8 p.m. – 5 a.m.	Full closures of Railroad Canyon Rd. and northbound I-15 on-ramp. Lane closure on northbound I-15 off-ramp. Please follow detour signs and see detour information below.
Monday, November 15	9 p.m. – 5 a.m.	Alternating lane closures of northbound and southbound Grape St.
Tuesday, November 16	8 p.m. – 4 a.m.	Northbound I-15 on-ramp closure Please follow detour signs and see detour information below.
Tuesday, November 16 – Friday, November 19	Nightly, 8 p.m. – 5 a.m.	Alternating lane closures on eastbound and westbound Railroad Canyon Rd. and on northbound and southbound Grape St. Roads remain open to through-traffic

Detours

Please use the following detours for the full closures of Railroad Canyon Rd. and the Railroad Canyon Rd. I-15 northbound on-ramp.

Westbound Railroad Canyon Rd. closure

- Westbound Railroad Canyon Rd. traffic will detour to northbound Canyon Estates Dr., turn left onto Main St. under I-15, turn left onto the southbound I-15 on-ramp, and exit southbound I-15 at Railroad Canyon Rd.

Westbound Railroad Canyon Rd. to northbound I-15

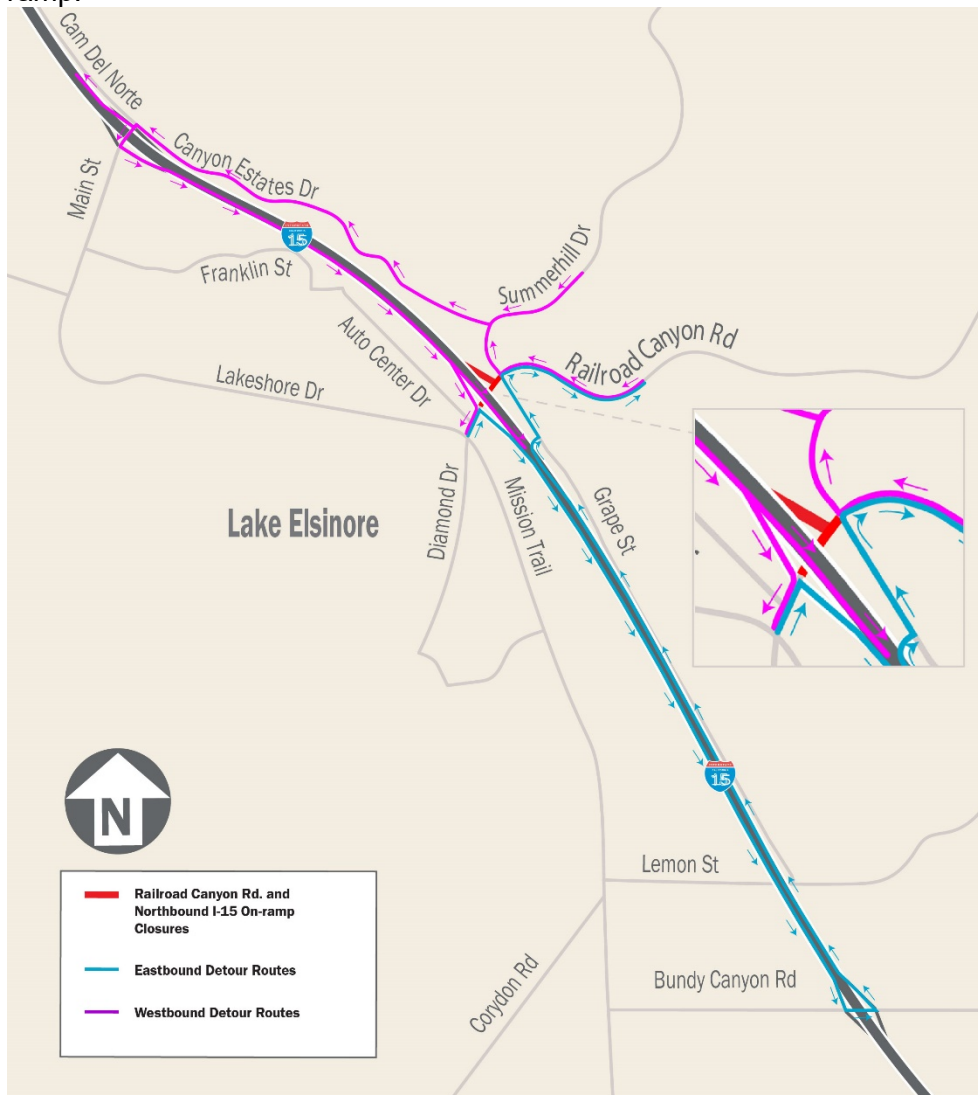
- Westbound Railroad Canyon Rd. traffic will detour to northbound Canyon Estates Dr., turn left onto Main St., merge onto northbound I-15 on-ramp.

Eastbound Railroad Canyon Rd. closure

- Eastbound Railroad Canyon Rd. traffic will detour to the southbound I-15 on-ramp, exit Bundy Canyon Rd., turn left under I-15, turn left onto the northbound I-15 on-ramp, and exit Railroad Canyon Rd.

Eastbound Railroad Canyon Rd. to northbound I-15

- Eastbound Railroad Canyon Rd. traffic will detour to the southbound I-15 on-ramp, exit Bundy Canyon Rd., turn left under I-15, and turn left onto the northbound I-15 on-ramp.



Project Background

The Riverside County Transportation Commission (RCTC), in partnership with Caltrans and the City of Lake Elsinore, is upgrading the Interstate 15 Railroad Canyon Interchange in Lake Elsinore. RCTC is the lead agency for this project.

The project will improve safety and capacity by adding lanes, modifying ramps, and building sidewalks and bike lanes along Railroad Canyon Road. These improvements will help residents and other travelers move through this area and reach businesses and other “Dream Extreme” attractions in Lake Elsinore.

Please expect periodic closures to lanes and ramps, slow down, allow extra travel time, watch for construction crews and equipment, be alert to changing conditions, follow detours, and stay informed by checking construction updates, social media, and mapping apps.

Stay Connected



@RailroadCanyon



RailroadCanyon@rctc.org



rctc.org/railroadcanyon



877-500-7715



Text RAILROAD to 772-22

Para recibir esta información en español, envíe nuestro equipo un [correo electrónico](#).

Riverside County Transportation Commission 4080 Lemon St., 3rd Floor Riverside, CA 92501

[Unsubscribe](#) | [Forward Email](#)