



**Interstate 15
RAILROAD CANYON
INTERCHANGE**

**Construction Update:
Week of November 1, 2021**



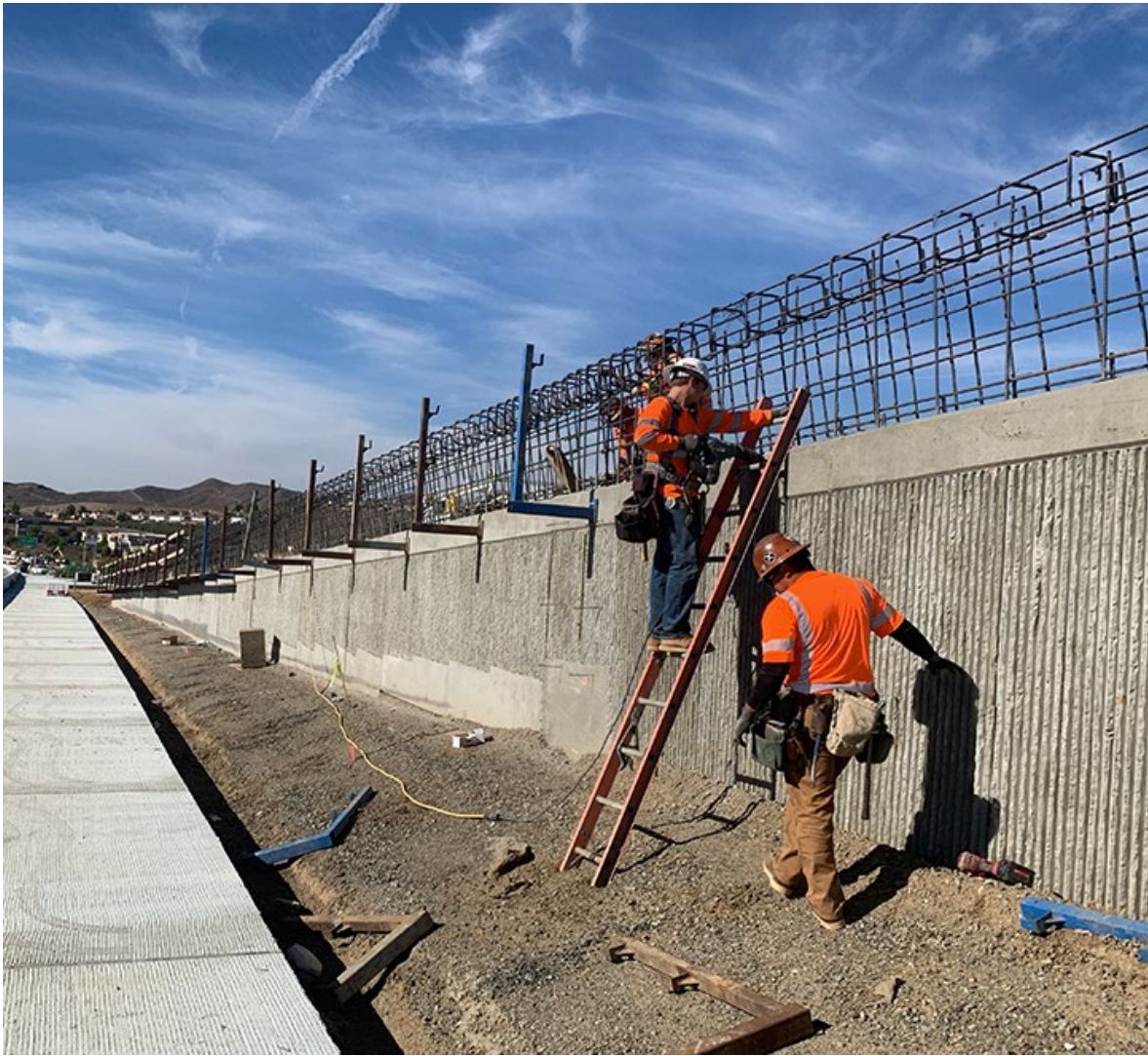
Daytime and nighttime lane closures of Railroad Canyon Rd. and Grape St. are scheduled Monday through Wednesday of next week for crews to safely perform electrical work.

Construction activity is subject to change. Follow us @RailroadCanyon for the latest updates.

Local Street Closures – Week of November 1, 2021		
Date	Time	Closure Details
Monday, November 1 – Tuesday, November 2	Daily, 9 a.m. – 3 p.m.	Lane closures on eastbound Railroad Canyon Rd. and southbound Grape St. Roads remain open to through-traffic.
Tuesday, November 2 – Wednesday, November 3	Nightly, 9 p.m. – 5 a.m.	Alternating lane closures on eastbound and westbound Railroad Canyon Rd. and on northbound and southbound Grape St. Roads remain open to through-traffic.

Project Progress

Crews continue to make progress on the northbound I-15 on-ramp retaining wall.



Project Background

The Riverside County Transportation Commission (RCTC), in partnership with Caltrans and the City of Lake Elsinore, is upgrading the Interstate 15 Railroad Canyon Interchange in Lake Elsinore. RCTC is the lead agency for this project.

The project will improve safety and capacity by adding lanes, modifying ramps, and building sidewalks and bike lanes along Railroad Canyon Road. These improvements will help residents and other travelers move through this area and reach businesses and other “Dream Extreme” attractions in Lake Elsinore.

Please expect periodic closures to lanes and ramps, slow down, allow extra travel time, watch for construction crews and equipment, be alert to changing conditions, follow detours, and stay informed by checking construction updates, social media, and mapping apps.

Stay Connected



@RailroadCanyon



RailroadCanyon@rctc.org



rctc.org/railroadcanyon



877-500-7715



Text RAILROAD to 772-22

Para recibir esta información en español, envíe nuestro equipo un [correo electrónico](#).

Riverside County Transportation Commission 4080 Lemon St., 3rd Floor Riverside, CA 92501

[Unsubscribe](#) | [Forward Email](#)