



## Interstate 15 RAILROAD CANYON INTERCHANGE

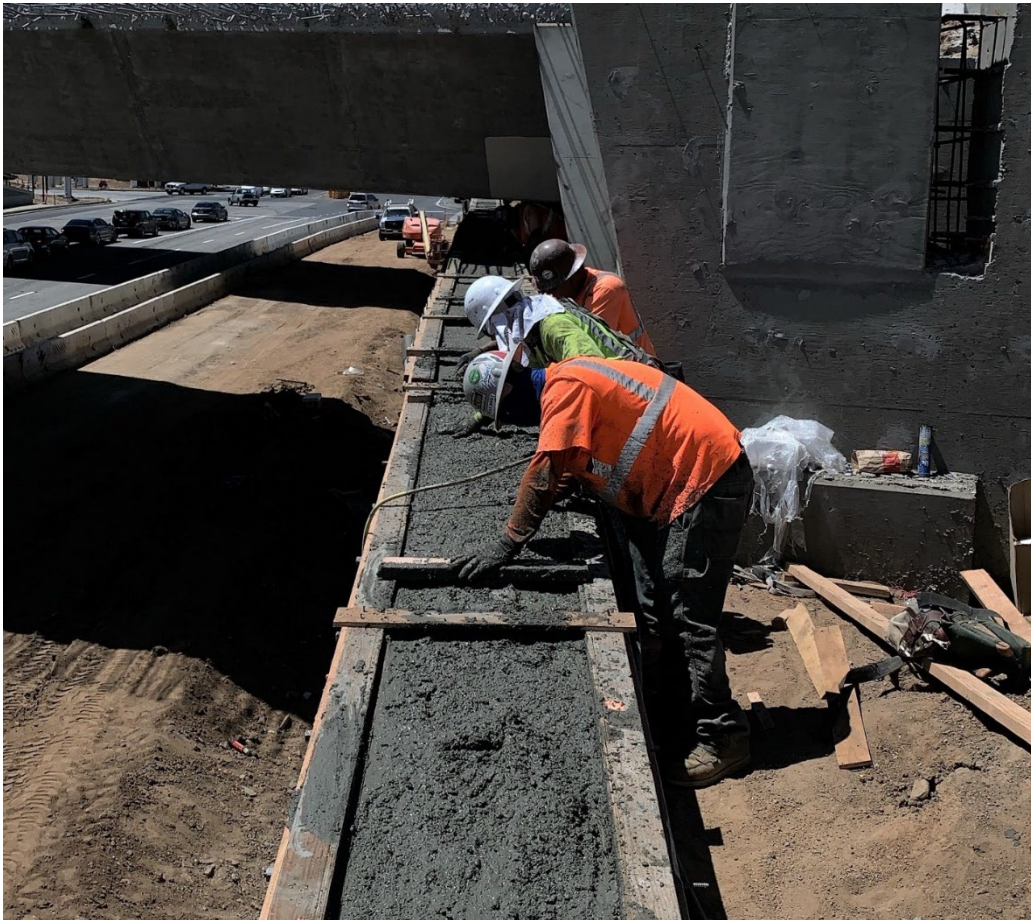
**Construction Update:  
Week of August 9, 2021**



There are no planned closures next week. Please stay alert and follow posted signs. Construction activity is subject to change. Follow us @RailroadCanyon for the latest updates.

### Project Progress

Crews made tremendous progress this week preparing for the drainage and art panels that are being placed on the retaining wall.



## Project Background

The Riverside County Transportation Commission (RCTC), in partnership with Caltrans and the City of Lake Elsinore, is upgrading the Interstate 15 Railroad Canyon Interchange in Lake Elsinore. RCTC is the lead agency for this project.

The project will improve safety and capacity by adding lanes, modifying ramps, and building sidewalks and bike lanes along Railroad Canyon Road. These improvements will help residents and other travelers move through this area and reach businesses and other “Dream Extreme” attractions in Lake Elsinore.

Please expect periodic closures to lanes and ramps, slow down, allow extra travel time, watch for construction crews and equipment, be alert to changing conditions, follow detours, and stay informed by checking construction updates, social media, and mapping apps.

## Stay Connected



@RailroadCanyon



RailroadCanyon@rctc.org



[rctc.org/railroadcanyon](http://rctc.org/railroadcanyon)



877-500-7715



Text RAILROAD to 772-22

Para recibir esta información en español, envíe nuestro equipo un [correo electrónico](#).

Riverside County Transportation Commission 4080 Lemon St., 3rd Floor Riverside, CA 92501

[Unsubscribe](#) | [Forward Email](#)