



Interstate 15  
**RAILROAD CANYON  
INTERCHANGE**

**Construction Update:  
Week of March 8, 2021**

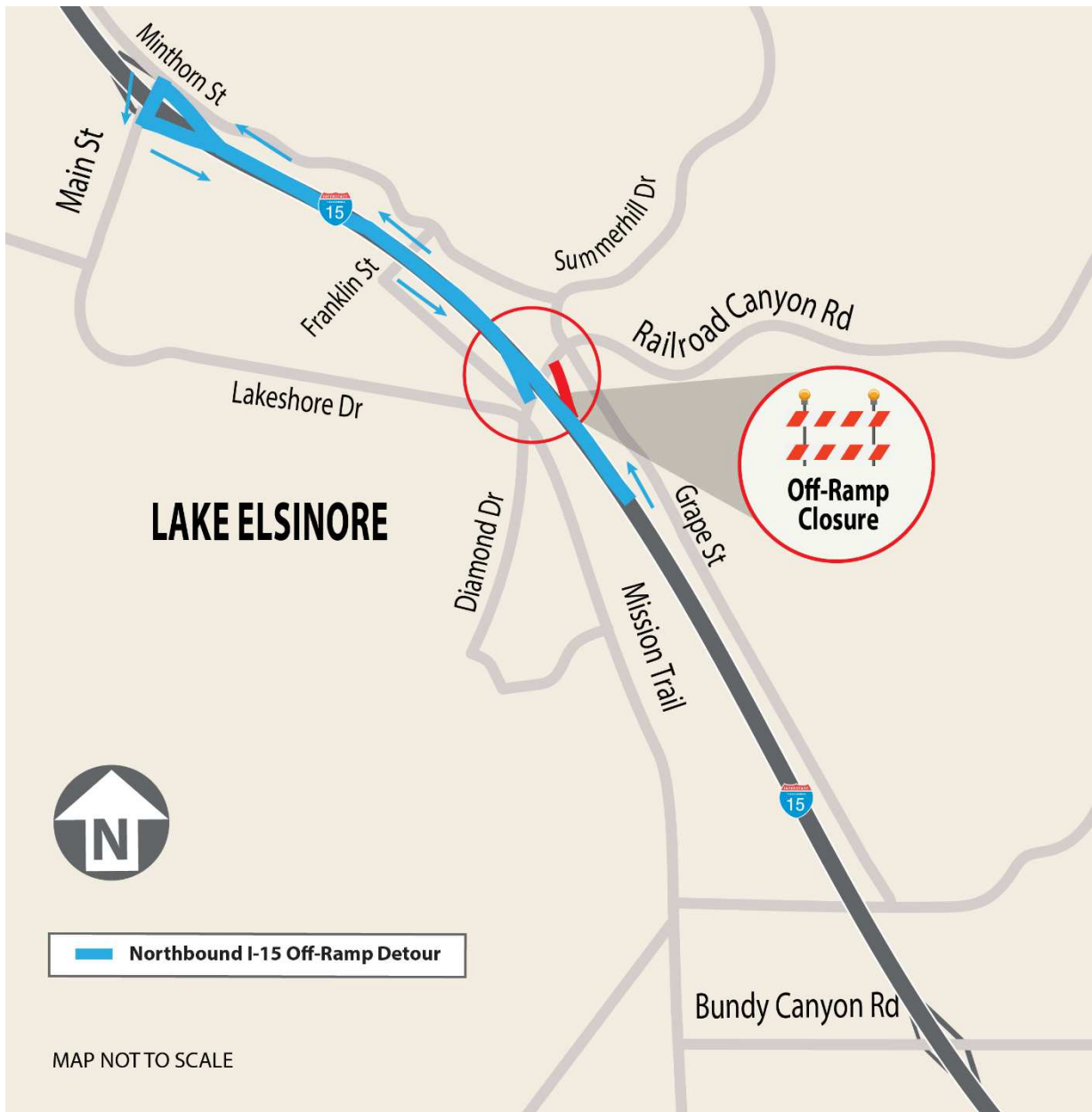


Highway and ramp closures are scheduled for Monday and Tuesday, March 8 and 9. See below for details.

Highway & Ramp Closures – Week of March 8, 2021		
Date	Time	Closure Details
Monday and Tuesday, March 8 and 9	Nightly, 8 p.m. – 4 a.m.	Closure of alternating northbound I-15 lanes
Tuesday, March 9	8 p.m. – 4 a.m.	Full closure of northbound I-15 off-ramp at Railroad Canyon Rd. See detour map below.

**Detour Map**

I-15 Northbound Off-Ramp Detour



## Project Background






The Riverside County Transportation Commission (RCTC), in partnership with Caltrans and the City of Lake Elsinore, is upgrading the Interstate 15 Railroad Canyon Interchange in Lake Elsinore. RCTC is the lead agency for this project.

The project will improve safety and capacity by adding lanes, modifying ramps, and building sidewalks and bike lanes along Railroad Canyon Road. These improvements will help residents and other travelers move through this area and reach businesses and other “Dream Extreme” attractions in Lake Elsinore.

Please expect periodic closures to lanes and ramps, slow down, allow extra travel time, watch for construction crews and equipment, be alert to changing conditions, follow

detours, and stay informed by checking construction updates, social media, and mapping apps.

**Stay Connected**

	@RailroadCanyon		RailroadCanyon@rctc.org
	rctc.org/railroadcanyon		877-500-7715
	Text RAILROAD to 772-22		

Para recibir esta información en español, envíe nuestro equipo un [correo electrónico](#).

Riverside County Transportation Commission 4080 Lemon St., 3rd Floor Riverside, CA 92501

[Unsubscribe](#) | [Forward Email](#)