



Interstate 15 RAILROAD CANYON INTERCHANGE

CLOSURE ALERT

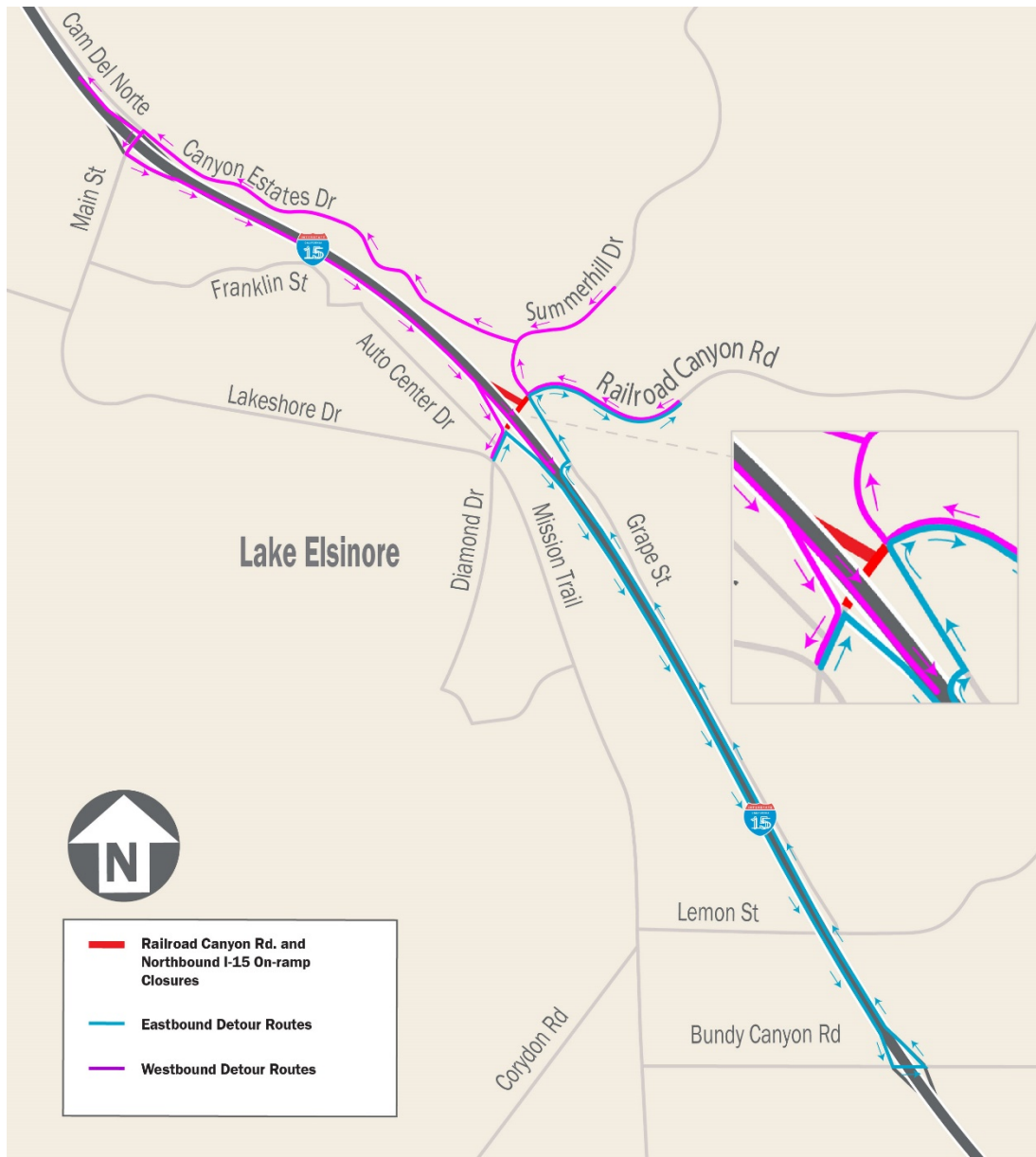


Full Street and Ramp Closures: Monday Night, November 15

Railroad Canyon Rd. and the Interstate 15 northbound on-ramp at Railroad Canyon Rd. will be fully closed **Monday, November 15 at 8 p.m. to Tuesday, November 16 at 5 a.m.** for crews to safely lower falsework from the northbound I-15 bridge. One lane of the northbound I-15 off-ramp also will be closed, along with alternating lane closures on Grape St.

Expect delays and allow extra travel time. Please follow the established detour routes listed below.

Detours





**Interstate 15
RAILROAD CANYON
INTERCHANGE**

CLOSURE ALERT



Westbound Railroad Canyon Rd. closure

- Westbound Railroad Canyon Rd. traffic will detour to northbound Canyon Estates Dr., turn left onto Main St. under I-15, turn left onto the southbound I-15 on-ramp, and exit southbound I-15 at Railroad Canyon Rd.

Westbound Railroad Canyon Rd. to northbound I-15

- Westbound Railroad Canyon Rd. traffic will detour to northbound Canyon Estates Dr., turn left onto Main St., merge onto northbound I-15 on-ramp.

Eastbound Railroad Canyon Rd. closure

- Eastbound Railroad Canyon Rd. traffic will detour to the southbound I-15 on-ramp, exit Bundy Canyon Rd., turn left under I-15, turn left onto the northbound I-15 on-ramp, and exit Railroad Canyon Rd.

Eastbound Railroad Canyon Rd. to northbound I-15

- Eastbound Railroad Canyon Rd. traffic will detour to the southbound I-15 on-ramp, exit Bundy Canyon Rd., turn left under I-15, and turn left onto the northbound I-15 on-ramp.



@RailroadCanyon



RailroadCanyon@rctc.org



rctc.org/railroadcanyon



877-500-7715



Text RAILROAD to 772-22

