



**Interstate 15
RAILROAD CANYON
INTERCHANGE**

**Construction Update:
Week of August 16, 2021**

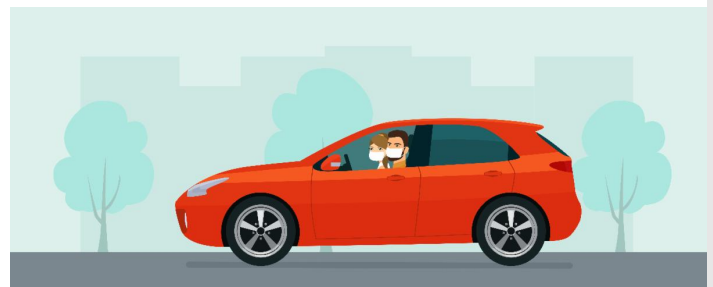


Lane and ramp closures will take place Monday and Friday night on Railroad Canyon Rd. for crews to safely perform electrical work.

Please stay alert and follow posted signs.

Reminder

Schools are back in session and more employees are returning to the office. Please watch for more vehicles on the road and increasing traffic congestion. Drive safely and allow extra travel time, especially during peak driving hours.



Construction activity is subject to change. Follow us @RailroadCanyon for the latest updates.

Ramp and Local Street Closures – Week of August 16, 2021		
Date	Time	Closure Details
Monday, August 16	9 p.m. – 5 a.m.	Alternating lane closures on eastbound and westbound Railroad Canyon Rd.
Monday, August 16	8 p.m. – 4 a.m.	Southbound I-15 Railroad Canyon Rd. off-ramp closed.
Friday, August 20	9 p.m. – 10 a.m.	Alternating lane closures on eastbound and westbound Railroad Canyon Rd.

Project Progress

Crews form rebar to support the foundation of a new retaining wall next to the northbound I-15 Railroad Canyon Road on-ramp.



Project Background

The Riverside County Transportation Commission (RCTC), in partnership with Caltrans and the City of Lake Elsinore, is upgrading the Interstate 15 Railroad Canyon Interchange in Lake Elsinore. RCTC is the lead agency for this project.

The project will improve safety and capacity by adding lanes, modifying ramps, and building sidewalks and bike lanes along Railroad Canyon Road. These improvements will help residents and other travelers move through this area and reach businesses and other “Dream Extreme” attractions in Lake Elsinore.

Please expect periodic closures to lanes and ramps, slow down, allow extra travel time, watch for construction crews and equipment, be alert to changing conditions, follow detours, and stay informed by checking construction updates, social media, and mapping apps.

Stay Connected



railroadcanyon@rctc.org



[@railroadcanyon](https://www.instagram.com/railroadcanyon)



877.500.7715



rctc.org/railroadcanyon



Text RAILROAD to 772-22