

CONSTRUCTION UPDATE: YEAR 1

Lake Elsinore City Council

July 13, 2021

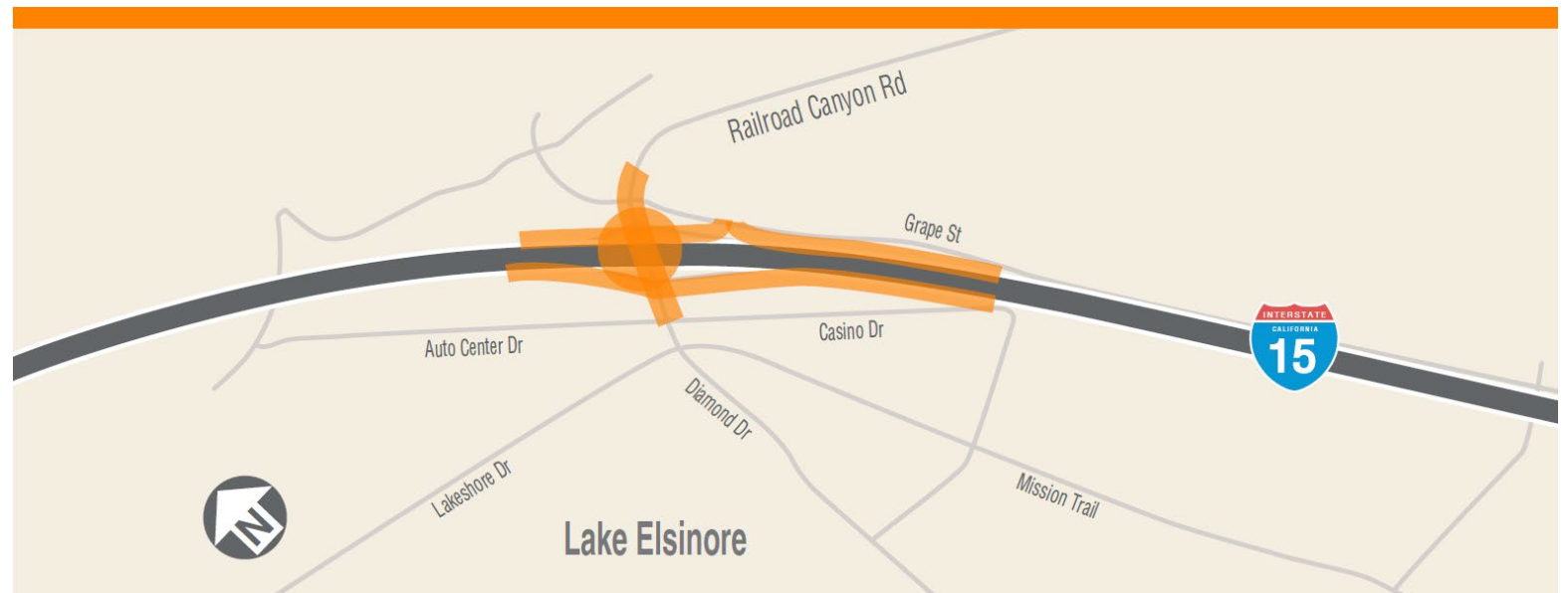
Bryce Johnston, Construction Manager





Project overview

- Strong partnership: RCTC, Caltrans, City of Lake Elsinore
- Addressing travel needs of Lake Elsinore's growing population, recreational visitors, Canyon Lake commuters
- Approximately 400 jobs created
- \$41 million for construction: SB 1, state funding, developer fees





Benefits

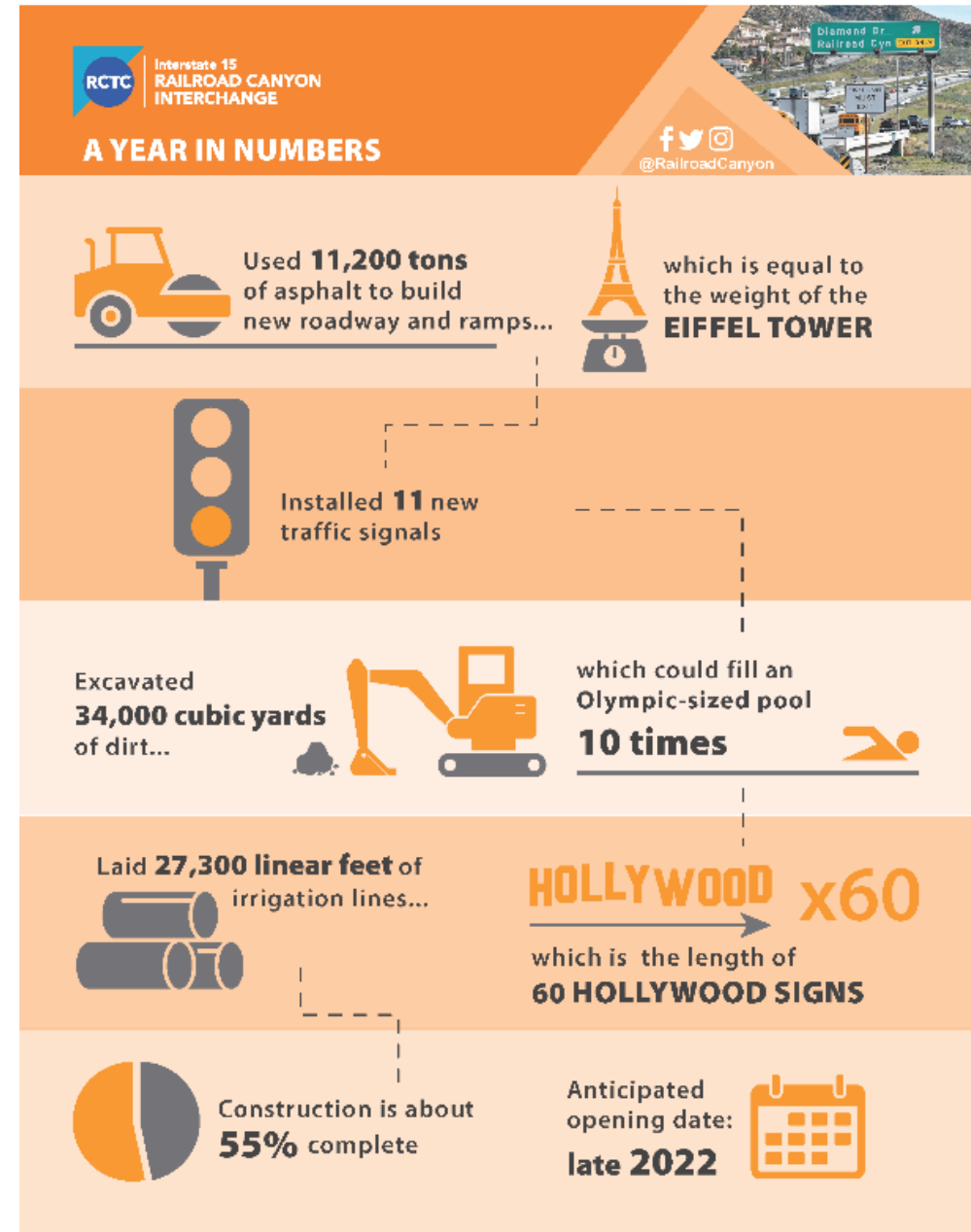
- **Safety:** Building auxiliary lanes on I-15 to improve traffic flow
- **Widening:** Adding two lanes to Railroad Canyon Road through interchange and new lanes to ramps
- **Traffic Flow:** Replacing northbound diamond off-ramp with hook ramps that connect to Grape Street
- **Air Quality:** Reducing idling vehicles entering/exiting I-15
- **Access:** Constructing sidewalks, bike lanes along Railroad Canyon Road





Schedule

- Construction began in June 2020
- Anticipated opening date: late 2022
- Reached one-year construction milestone
- Construction facts and figures at right



First-year construction activities



- Added auxiliary lanes to northbound, southbound I-15
- Widened, reconfigured on-ramps, off-ramps
- Improved local streets, added traffic signals
- Built three retaining walls

First-year construction activities

- Relocated utilities: gas, water, electrical, communications
- Added guardrails, restriped lanes for safety, visibility
- Constructed 30 drainage systems
- Used red stamped concrete in Grape Street median for aesthetics
- Installed landscape irrigation



Looking ahead

- Railroad Canyon Rd. bridge widening
- Grape St. northbound hook on-ramp
- Railroad Canyon northbound on-ramp
- Fourth – and final – retaining wall
- Landscaping
- Roadway opening





Stay connected



rctc.org/railroadcanyon



Text RAILROAD to 772-22



877-500-7715



@RailroadCanyon



RailroadCanyon@rctc.org



QUESTIONS

