



[View as PDF](#)

Construction Update: Week of January 11

Westbound 91 Full Closure

A full closure of the westbound 91 between the 71 in Corona and the 241 Toll Road will occur **Friday, January 15 at 11 p.m. to Saturday, January 16 at 5 a.m.** The closure is needed for crews to safely remove overhead signage. Please avoid the area if possible. Otherwise, please expect significant delays, allow extra time, and use alternate routes.

Other roadways will be closed starting at 10 p.m. to support the full closure of westbound 91, including the westbound Green River Road on-ramp and off-ramp, the southbound 71 to westbound 91 connector, and the westbound 91 Express Lanes in Riverside and Orange counties. Construction activity may change due to weather or other factors. If work cannot be performed on January 15, it will be rescheduled to January 16.

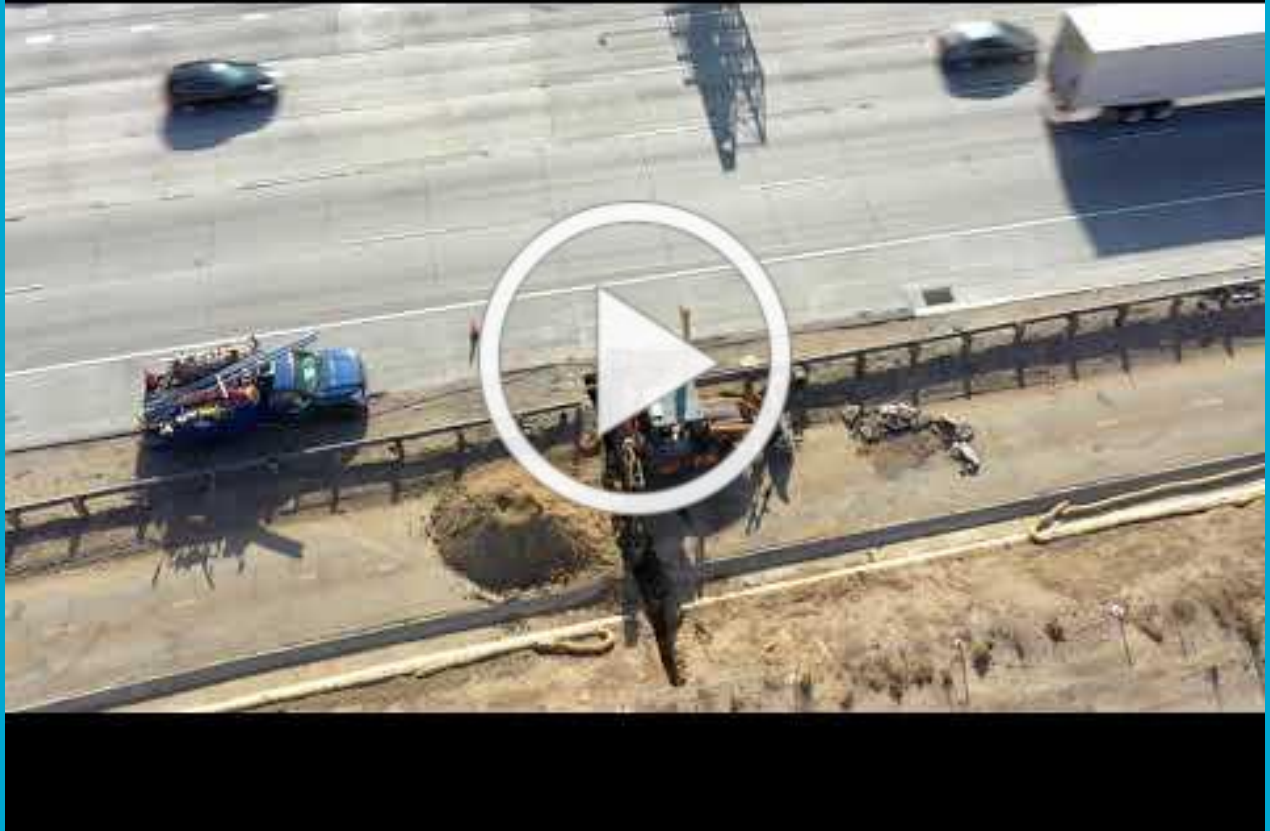
In addition, during the daytime hours the week of January 11, crews will be excavating, shoring, and pile driving on the north side of the westbound 91.



[Download Detour Map](#)

[Weekly View from Above](#)





Reminder

Temporary Relocation: Parking Lot at Green River Road Santa Ana River Trailhead

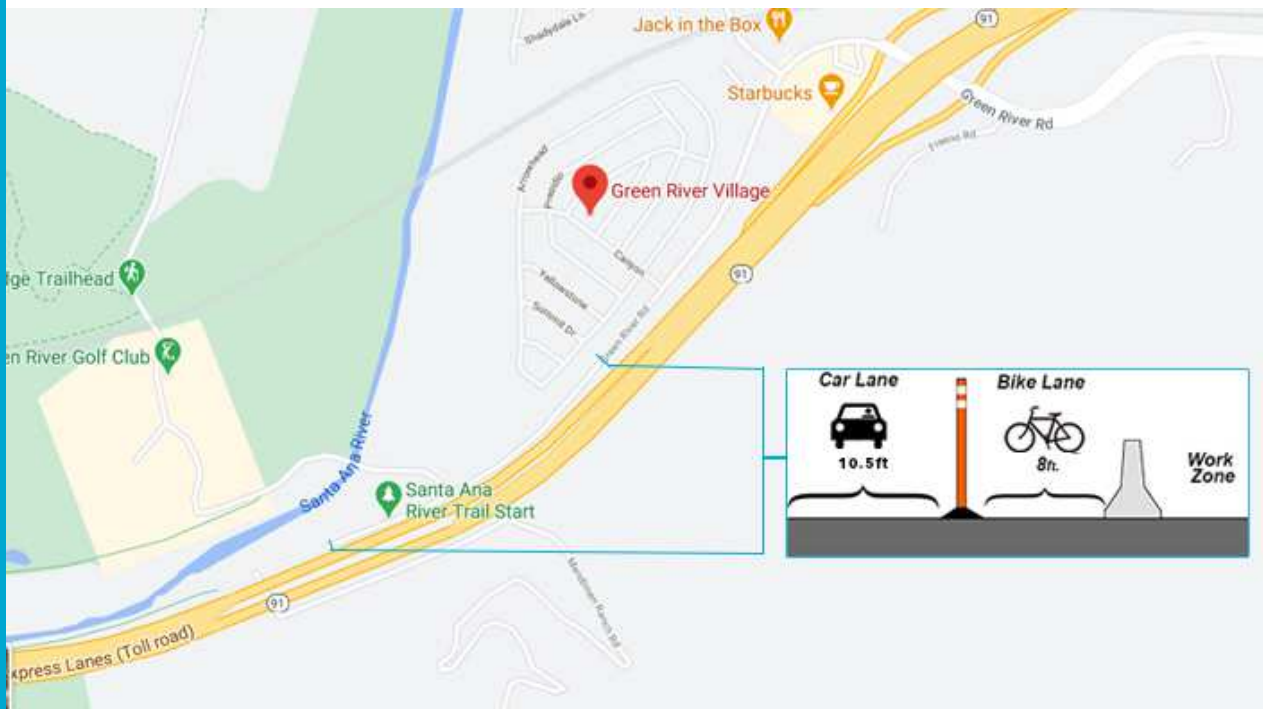
[View PDF](#)

The parking lot at the Santa Ana River Trailhead at Green River Road is closed through summer 2021 for the safety of trail users and construction crews. The SART will remain open during construction, and access to the trail will be provided (see below). During the parking lot closure, trail users may park on the top level of the outdoor parking lot at 4740 Green River Road. **Do not park at the Green River Golf Club; parking is for club patrons only. If you are seen parking at the golf course to use the SART your vehicle could be towed.**



Please Follow Traffic Signals

Some motorists have been ignoring the temporary signals at Green River Road and running the red light. This creates a safety hazard for yourself, other drivers and pedestrians, and our construction crews. Signal times are no longer than two minutes; please be patient and do not put yourself or others in danger.



Safety Reminder: Stay in designated lane when heading to the SART

A designated 8-foot travel lane is provided for cyclists and pedestrians to pass through the construction area safely. Please stay in this lane when heading to the Santa Ana River Trail.

Project Overview

The Riverside County Transportation Commission, in partnership with Caltrans, the Orange County Transportation Authority, the Transportation Corridor Agencies, and the City of Corona, is building the 91 Corridor Operations Project. The project will add a lane to westbound 91 for approximately two miles between the Green River Road on-ramp and the southbound 241 connector. The new lane, which will be built next to the outer shoulder, will help relieve westbound traffic congestion through this heavily traveled corridor and is expected to open in late 2021.

Please stay connected through construction updates, follow @therctc on social media, and watch for lane closures, narrower lanes, construction crews and equipment, and changing conditions on the 91 and Green River Road. Noisy work also may be required.

Check out our project overview video!

STAY CONNECTED:

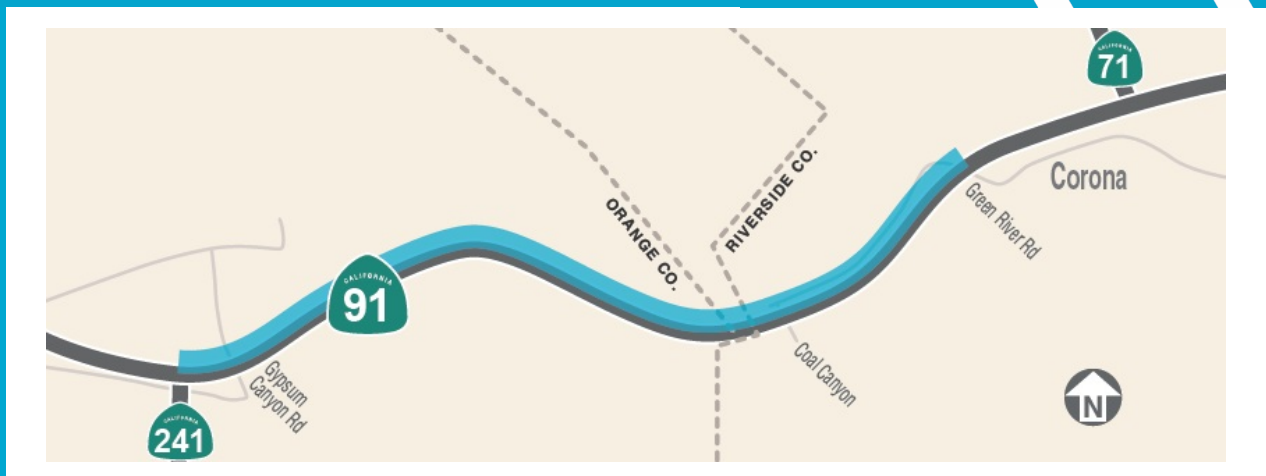
📞 1 (833) 460-5606

✉️ 91cop@rctc.org

📶 rctc.org/91C



Construction Area



Stay Connected



1 (833) 460-5606
Text "91COP" to 80123



[RCTC.org/91COP](https://rctc.org/91COP)



91COP@RCTC.org



@91COP

Riverside County Transportation Commission | 4080 Lemon Street, 3rd Floor, Riverside, CA 92501

[Unsubscribe {recipient's email}](#).

[Update Profile](#) | [About our service provider](#)

Sent by 91cop@rctc.org powered by



Try email marketing for free today!