



**State Route 91
CORRIDOR OPERATIONS
PROJECT**



[View as PDF](#)

Construction Update: Week of December 14, 2020

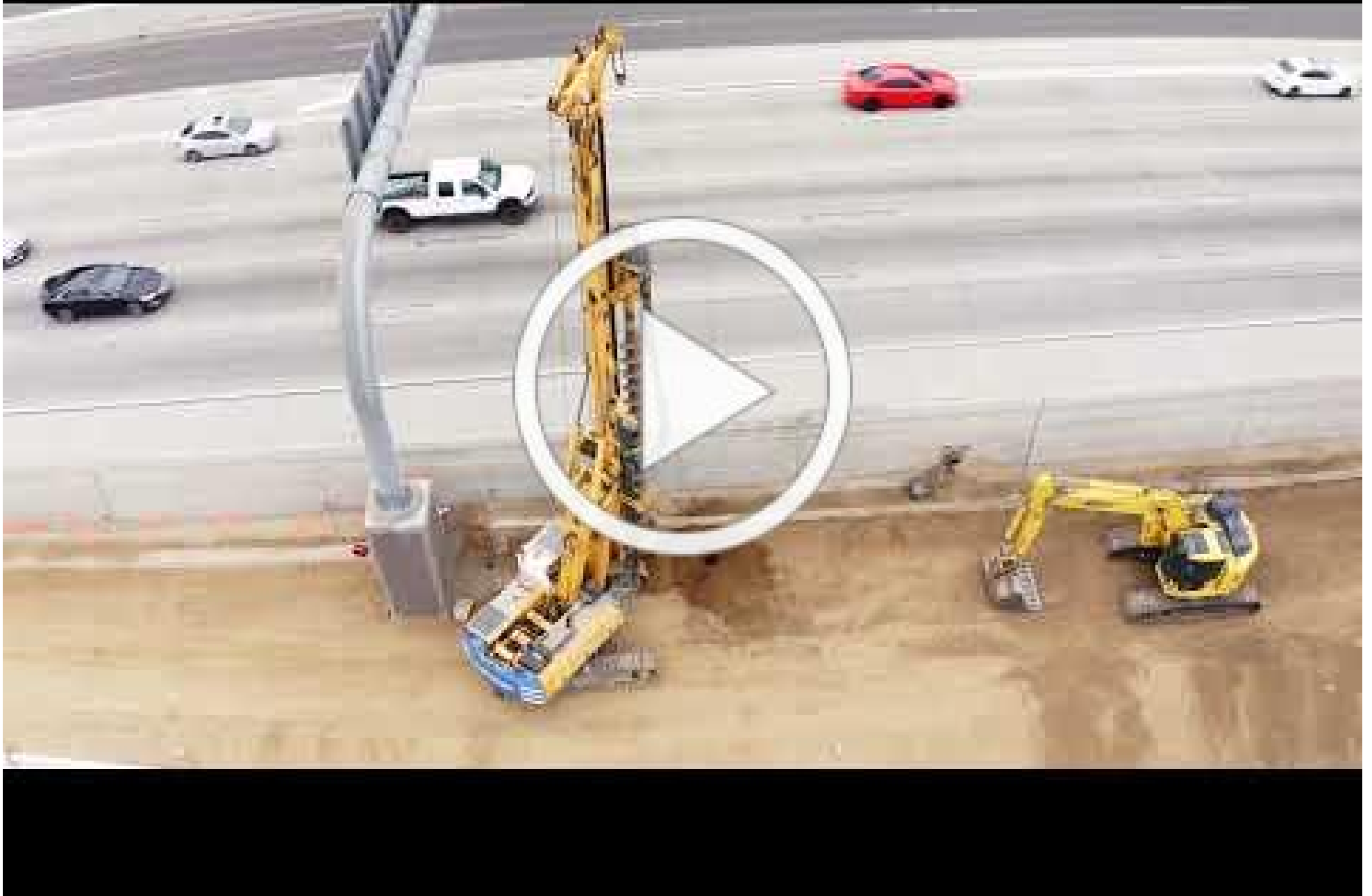
Upcoming 91 Nighttime Closures

Expect nighttime lane closures **Monday - Friday** on eastbound and westbound 91 for restriping and electrical work. See table below.

Anticipated Closures	Activity	Location	Closure Times
Monday, Dec. 14 and Tuesday, Dec. 15	Eastbound 91: Up to two lanes closed	Gypsum Canyon Rd to Green River Rd	Nightly, 9 p.m. – 5 a.m.
Wednesday, Dec. 16	Westbound 91: Various lanes closed, including 91 Express Lanes	Green River Rd to Gypsum Canyon Rd	7 p.m. – 4 a.m.
Wednesday, Dec. 16	Eastbound 91: Up to two lanes closed	Gypsum Canyon Rd to Green River Rd	9 p.m. – 5 a.m.
Thursday, Dec. 17	Ramp Closed	Westbound 91 Green River Road On-Ramp	10 p.m. – 5 a.m.
Thursday, Dec. 17	Westbound 91: Various lanes closed, including 91 Express Lanes	Green River Rd to Gypsum Canyon Rd	8 p.m. to 4 a.m.
Thursday, Dec. 17	Eastbound 91: Up to two lanes closed	Gypsum Canyon Rd to Green River Rd	9 p.m. to 5 a.m.
Friday, Dec. 18	Westbound 91: Two lanes closed	Green River Rd to Gypsum Canyon Rd	10 p.m. to 5 a.m.
Friday, Dec. 18	Eastbound 91: Two lanes closed	Gypsum Canyon Rd to Green River Rd	11 p.m. to 6 a.m.

Weekly View from Above





Reminder



Temporary Relocation: Parking Lot at Green River Road Santa Ana River Trailhead

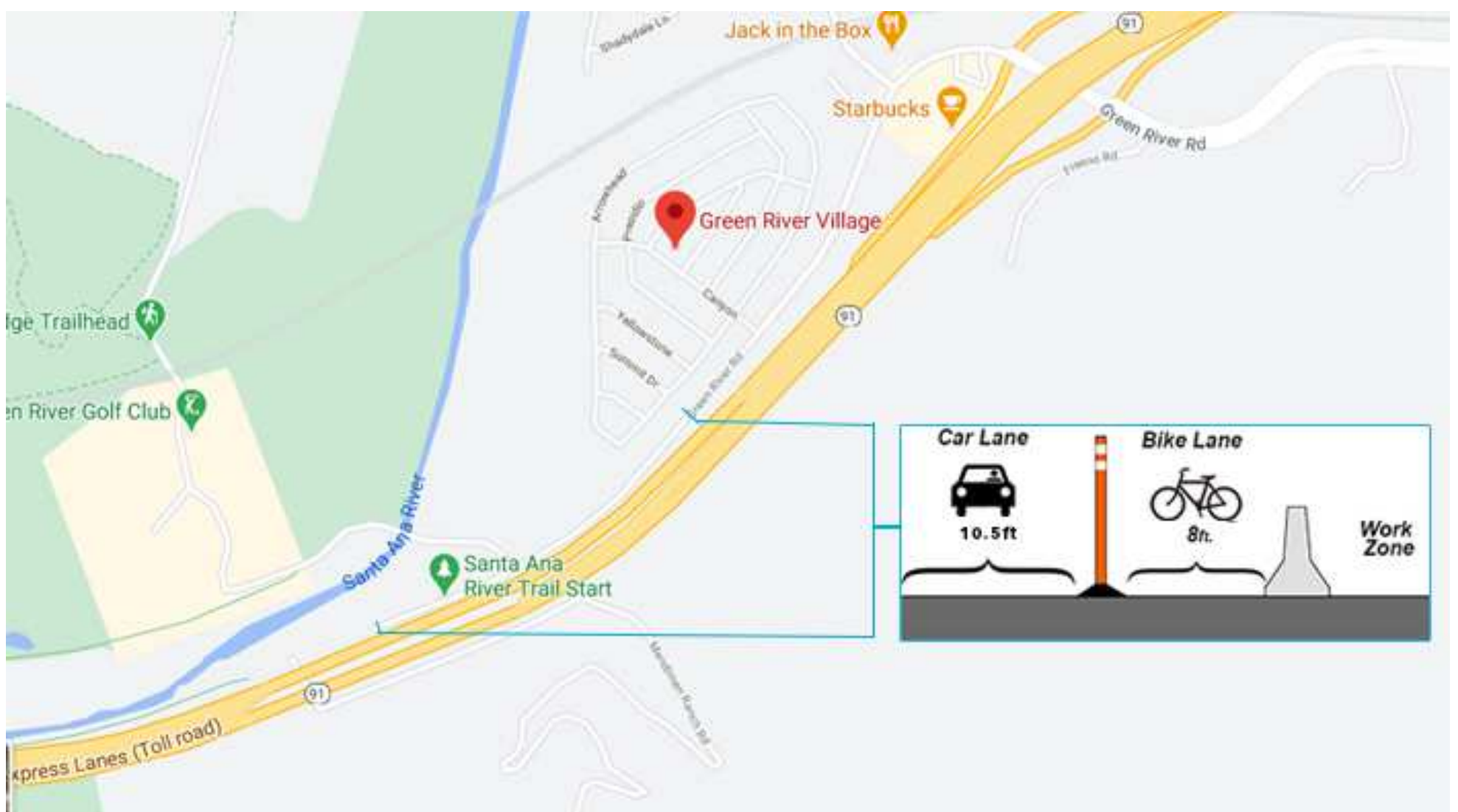
[View PDF](#)

The parking lot at the Santa Ana River Trailhead at Green River Road is closed through summer 2021 for the safety of trail users and construction crews. The SART will remain open during construction, and access to the trail will be provided (see below). During the parking lot closure, trail users may park on the top level of the outdoor parking lot at 4740 Green River Road. Do not park at the Green River Golf Club; parking is for club patrons only.



Safety Reminders: Stay in designated lane when heading to the SART and follow traffic signals

A designated 8-foot travel lane is provided for cyclists and pedestrians to pass through the construction area safely. Please stay in this lane when heading to the Santa Ana River Trail. Green River Road also has new temporary traffic signals. Please follow these signals for the safety of yourself, other drivers, and our construction crews.



Project Overview



The Riverside County Transportation Commission, in partnership with Caltrans, the Orange County Transportation Authority, the Transportation Corridor Agencies, and the City of Corona, is building the 91 Corridor Operations Project. The project will add a lane to westbound 91 for approximately two miles between the Green River Road on-ramp and the southbound 241 connector. The new lane, which will be built next to the outer shoulder, will help relieve westbound traffic congestion through this heavily traveled corridor and is expected to open in late 2021.

Please stay connected through construction updates, follow @therctc on social media, and watch for lane closures, narrower lanes, construction crews and equipment, and changing conditions on the 91 and Green River Road. Noisy work also may be required.

Check out our project overview video!



Construction Area





Stay Connected

1 (833) 460-5606
Text "91COP" to 80123

RCTC.org/91COP

91COP@RCTC.org

[@91COP](https://twitter.com/91COP)

Riverside County Transportation Commission | 4080 Lemon Street, 3rd Floor, Riverside, CA 92501

[Unsubscribe {recipient's email}](#)

[Update Profile](#) | [About our service provider](#)

Sent by 91cop@rctc.org powered by



Try email marketing for free today!